

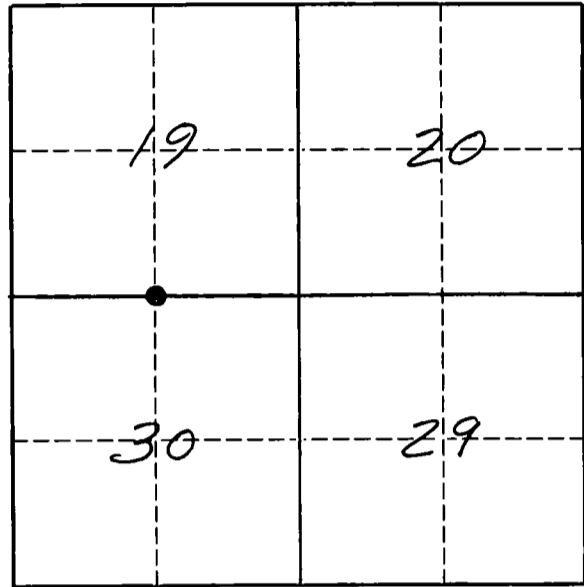
# U. S. PUBLIC LAND SURVEY MONUMENT RECORD

**INSTRUCTIONS.**

This record shall show the location of the corner and shall include all of the following nine elements (a through i).

- (a) Identify the corner by reference to the U.S. public land survey system  
 ● = Corner monument restored.

The North Quarter corner of Section 30, Township 33 North, Range 12 East, Langlade County, Wisconsin.



T. 33 N., R. 12 E.

- (b) Describe any record evidence, monument evidence, occupational evidence, testimonial evidence or any other material evidence you considered, and whether the monument was found or placed.

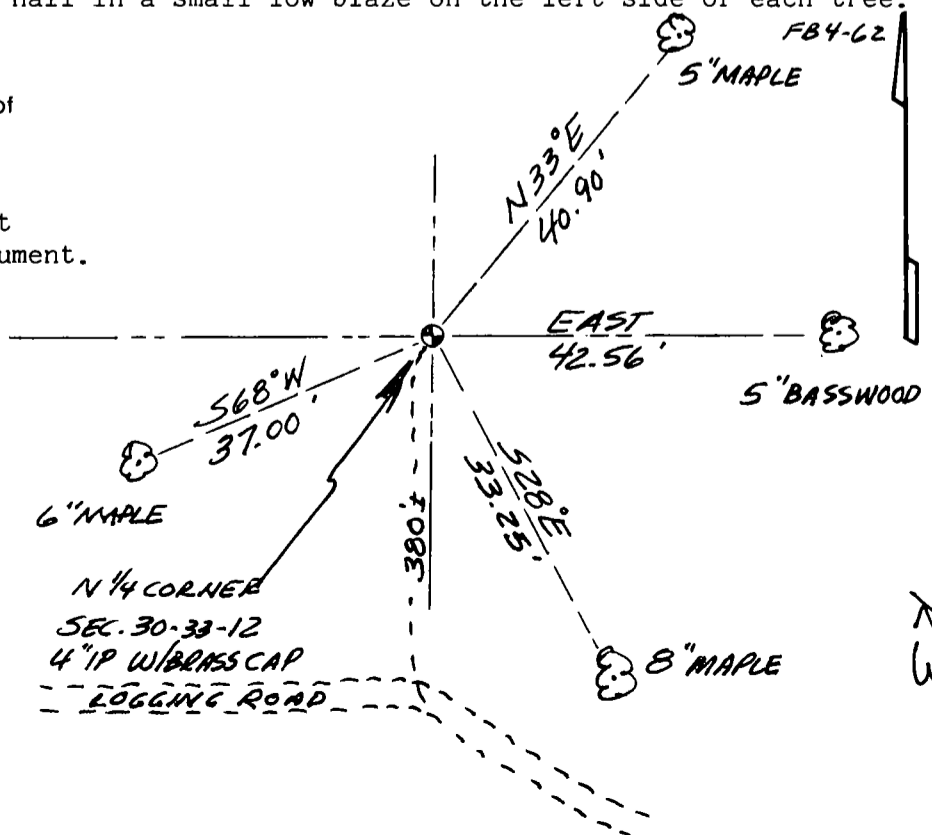
The original corner was established in 1865 by James L. Nowlin. Original bearing trees: Elm, 20", S10°E, 20 lks., and a Birch, 18", N49°W, 35 lks. The 1930's re-survey of part of this township found part of burned stake and original stump of Birch BT, and replaced the stake with a 4" iron pipe with brass cap and marked a new grey stone, 2' x 4', N6°E. 49 lks. (32.34'). 05/02/94 I found a 4" iron pipe with brass cap and an unmarked grey stone, 2' x 4' at N6°E, 32.5'. Top of monument is about 6" out of the ground. I accept the location of this pipe as the original corner location and perpetuate it as shown below.

- (c) In the plan view drawing below, provide reference ties to at least 4 witness monuments, or, if the location is within a municipality, to at least 2 witness monuments. (Witness monuments shall be made of concrete, natural stone, iron or other equally durable material.)  
 Describe witness monuments.

☺ = BT marked with a scribed (BT) low blaze facing the corner, a bark smoothed blue paint band 5' above ground, and a BT sign above the paint band, facing the corner. Distance is to an aluminum nail in a small low blaze on the left side of each tree.

- (d) Show a plan view drawing depicting the relevant monuments and reference ties which is sufficient in detail to enable accurate relocation of the corner monument if the corner monument is disturbed. Indicate north.

Set a white vinyl sign post 2' north of the corner monument.  
 Bearings magnetic with hand compass.



SKETCH NOT TO SCALE!

Describe any material discrepancy between the location of the corner as restored or reestablished and the location of that corner as previously restored or reestablished by distance and direction. Show the discrepancy on the plan view drawing under (d), above. Show the distances between the corner as previously restored or reestablished and (1) the corner as restored or reestablished, and (2) to at least 2 of the witness monuments shown on the drawing in (d), above.

No discrepancy.

(f) Was the corner restored through acceptance of (1) an obliterated evidence location, or, (2) a found perpetuated location?  
A found perpetuated location.

(g & h) Was the corner reestablished through lost corner proportionate methods? If so, show the method, including the directions and distances to other public land survey corners used as evidence or used for proportioning in determining the corner location.  
No.

(i) I, David E. Tlusty, Langlade County Surveyor  
(type or print name)  
certify that the corner location shown on this record was determined by me or under my direction and control and that this U.S. Public Land Survey Monument Record is correct and complete to the best of my knowledge and belief.



David E. Tlusty  
Signature  
5/10/94  
Date