

CERTIFIED LAND CORNER RESTORATION

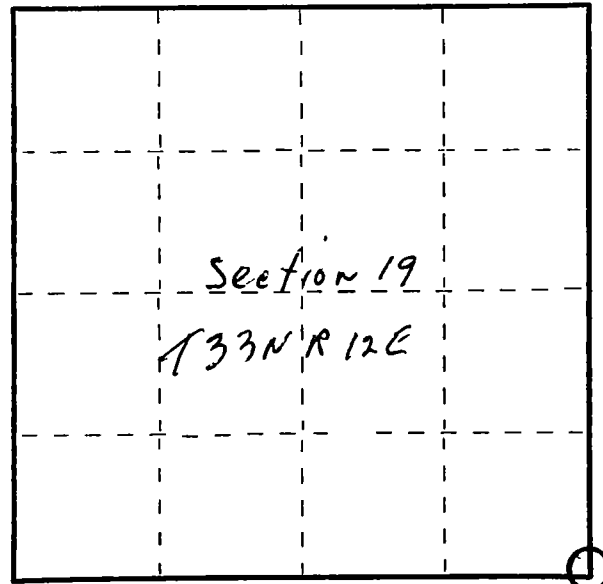
Index No. R-5

State of Wisconsin }  
County of Lan glade } ss.

I Raymond J. Hallisy, do hereby certify that on the 19th day of January, 1980, I found evidence of the Section corner of 19, 20, 29, & 30 Township 33, North, Range 12E, Fourth Principal Meridian, as described hereon; and that from this evidence I established a new monument and accessories as described hereon to perpetuate the original location of this corner.

Resident witnesses:

.....  
.....  
.....



○ = Corner monument restored.

History of original corner establishment:

Corner set in the 1930 resurvey.

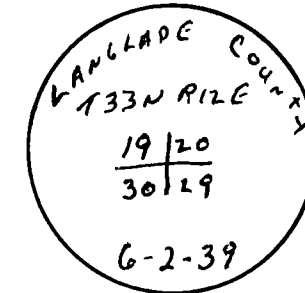
Description of corner evidence found:

4" iron pipe with brass cap, rock mound.

Description of monument and accessories I established to perpetuate the original location of this corner.

New BT's

16"	Hard Maple	N59W	32 Links
6"	Cherry	N82E	14.3 Links
16"	Hard Maple	S45E	31.8 Links



Dated at Antigo, Wis., this 19th day of January, 1980

Signature Raymond J. Hallisy Title Land Surveyor Registration Nos. 685  
(County Surveyor, Registered Land Surveyor, or other duly authorized official)

Office of Register of Deeds, County of \_\_\_\_\_, I hereby certify that the within instrument was filed in this office for record on the \_\_\_\_\_ day of \_\_\_\_\_, 19\_\_\_\_ at \_\_\_\_\_ o'clock \_\_\_\_\_ M.

.....  
(Register of Deeds)

By \_\_\_\_\_ Deputy