

CERTIFIED LAND CORNER RESTORATION

Index No. M-9

State of Wisconsin }
County of Lanola } ss.

I, Raymond J. Hallisy, do hereby certify that on the 9th day of January, 1982, I found evidence of the S 1/16 corner of Section 16 & 17 Township 33, North, Range 12E, Fourth Principal Meridian, as described hereon; and that from this evidence I established a new monument and accessories as described hereon to perpetuate the original location of this corner.

History of original corner establishment:

Corner set in ~~the~~ 1930 resurvey.

Description of corner evidence found:

Wood post standing, marked S16, S17, S1/16

Resident witnesses:

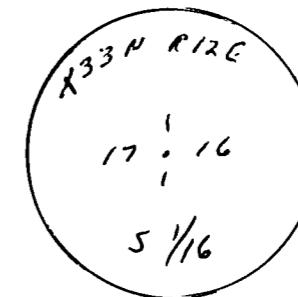
.....
.....
.....

Description of monument and accessories I established to perpetuate the original location of this corner.

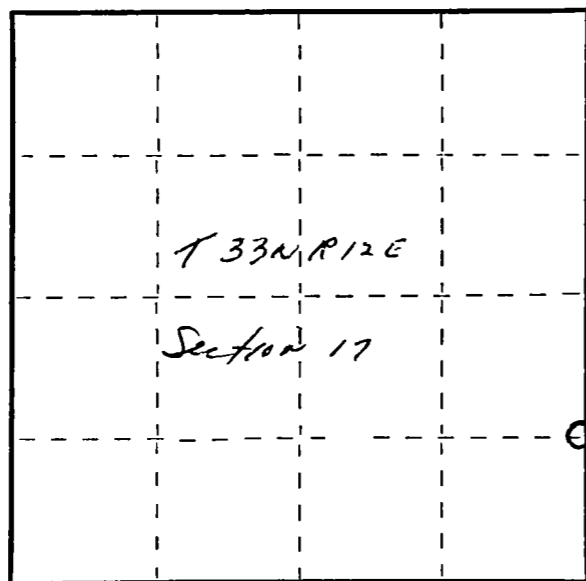
Set $1\frac{1}{2}$ " iron pipe with Aluminum cap.

New BT's

12" Hard Maple S64W 18.3'
12" White Birch S1/4E 22.6'
8" White Birch N70W 15.3'



FORM 985 H. C. MILLER CO., MILWAUKEE



○ = Corner monument restored.

Dated at Antigo, Wis., this 9th day of January, 1982.

Signature Raymond J. Hallisy Title Land Surveyor Registration No. S-685
(County Surveyor, Registered Land Surveyor, or other duly authorized official)

Office of Register of Deeds, County of....., I hereby certify that the within instrument was filed in this office for record on the.....day of....., 19..... at.....o'clock..... M.

.....
(Register of Deeds)

By.....Deputy