

CERTIFIED LAND CORNER RESTORATION

Index No. N-7  
33-12

State of Wisconsin }  
County of Lan glade } ss.

I Raymond J. Hallisy, do hereby certify that on the 21st day of July, 1979, I found evidence of the 1/4 corner of Section 17 & 20 Township 33, North, Range 12E, Fourth Principal Meridian, as described hereon; and that from this evidence I established a new monument and accessories as described hereon to perpetuate the original location of this corner.

History of original corner establishment:

Corner set in the 1930 resurvey.

Description of corner evidence found:

4" pipe with brass cap bulldozed out by logging operation.  
Located rock mound and hole

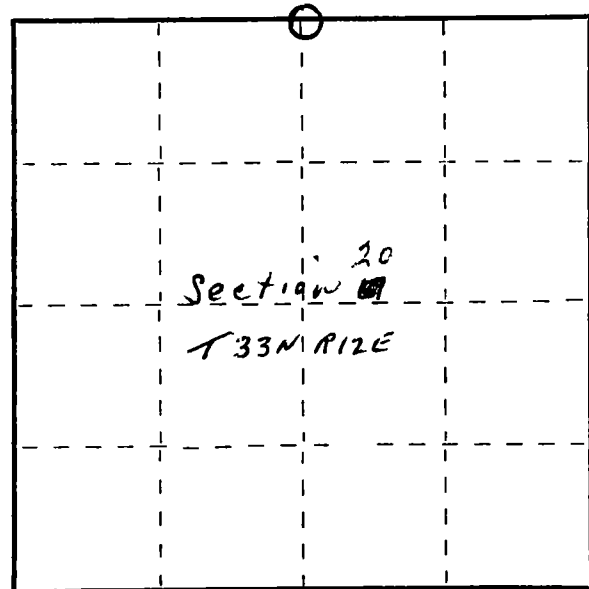
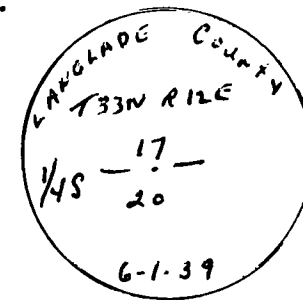
Resident witnesses:

.....  
.....  
.....

Description of monument and accessories I established to perpetuate the original location of this corner.

Reset 4" pipe with brass cap and rock mound.  
New BT's

6" Cherry N12E 19' 4"  
16" Aspen N84E 17' 6"



○ = Corner monument restored.

Dated at Antigo, Wis., this 21st day of July, 1979.

Signature Raymond J. Hallisy Title Reg. Surveyor Registration No. 5685  
(County Surveyor, Registered Land Surveyor, or other duly authorized official)

Office of Register of Deeds, County of \_\_\_\_\_, I hereby certify that the within instrument was filed in this office for record on the \_\_\_\_\_ day of \_\_\_\_\_, 19\_\_\_\_ at \_\_\_\_\_ o'clock \_\_\_\_\_ M.

.....  
(Register of Deeds)

By \_\_\_\_\_ Deputy

FORM 985 M. C. MILLER CO., MILWAUKEE