

CERTIFIED LAND CORNER RESTORATION

Index No. N-9

State of Wisconsin }
County of Lanlade } ss.

I Raymond J. Hallisy, do hereby certify that on the 12th day of April, 19 80, I found evidence of the Section corner of 16, 17, 20, & 21 Township 33, North, Range 12E, Fourth Principal Meridian, as described hereon; and that from this evidence I established a new monument and accessories as described hereon to perpetuate the original location of this corner.

Resident witnesses:

.....
.....
.....

History of original corner establishment:

Corner set in the 1930 resurvey.

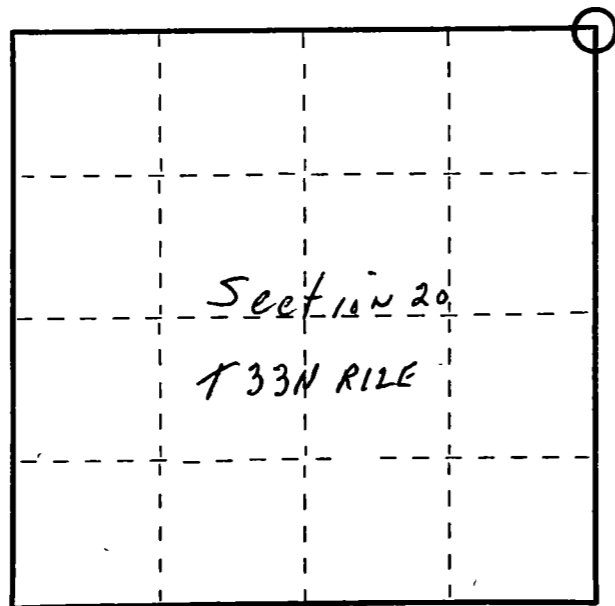
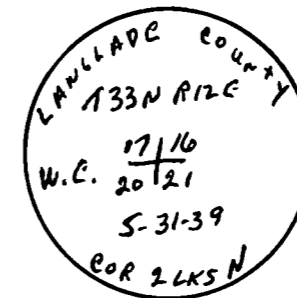
Description of corner evidence found:

4" iron pipe with brass cap as witness corner
X on rock 2 lks North

Description of monument and accessories I established to perpetuate the original location of this corner.

New BTs

5" Balsam N27W 10'
3" Hard Maple S75E 26'11"
6" Red Maple S48E 46'



○ = Corner monument restored.

Dated at Antigo, Wis., this 12th day of April, 19 80.

Signature Raymond J. Hallisy Title Land Surveyor Registration No. S-685
(County Surveyor, Registered Land Surveyor, or other duly authorized official)

Office of Register of Deeds, County of....., I hereby certify that the within instrument was filed in this office for record on the..... day of....., 19..... at..... o'clock..... M.

(Register of Deeds)

By..... Deputy

FORM 985 W. C. MILLER CO., MILWAUKEE