

U.S. PUBLIC LAND SURVEY MONUMENT RECORD

(Prepared and as required by S. A-E 7.08 WI Administrative Code)

The Southwest corner of Section 14, T. 33 N., R. 12 E., Langlade County, WI

Corner was: (check all that apply)

- Restored through acceptance of an obliterated evidence location.
- Restored through acceptance of a found perpetuated location.
- Determined to be lost and re-established through proportionate methods.
(Show bearings and distances to PLSS corners used for proportioning.)
- Restored/recovered/reestablished in a location that differs from a previously established position. (Show difference in plan view below.)

Check here if additional information is shown on the reverse side of this form.

Describe record evidence, recovered physical evidence, occupational evidence, testimonial evidence and all other evidence considered in the recovery/restoration of the corner.

Originally monumented by J. Nowlin in May 1865.

Birch 8 N85E 12 (no evidence)
Birch 6 N25W 6 (no evidence)

Monumented in 1939 by the C.C.C. (C.C.C. monument 1.32' South of Stone)

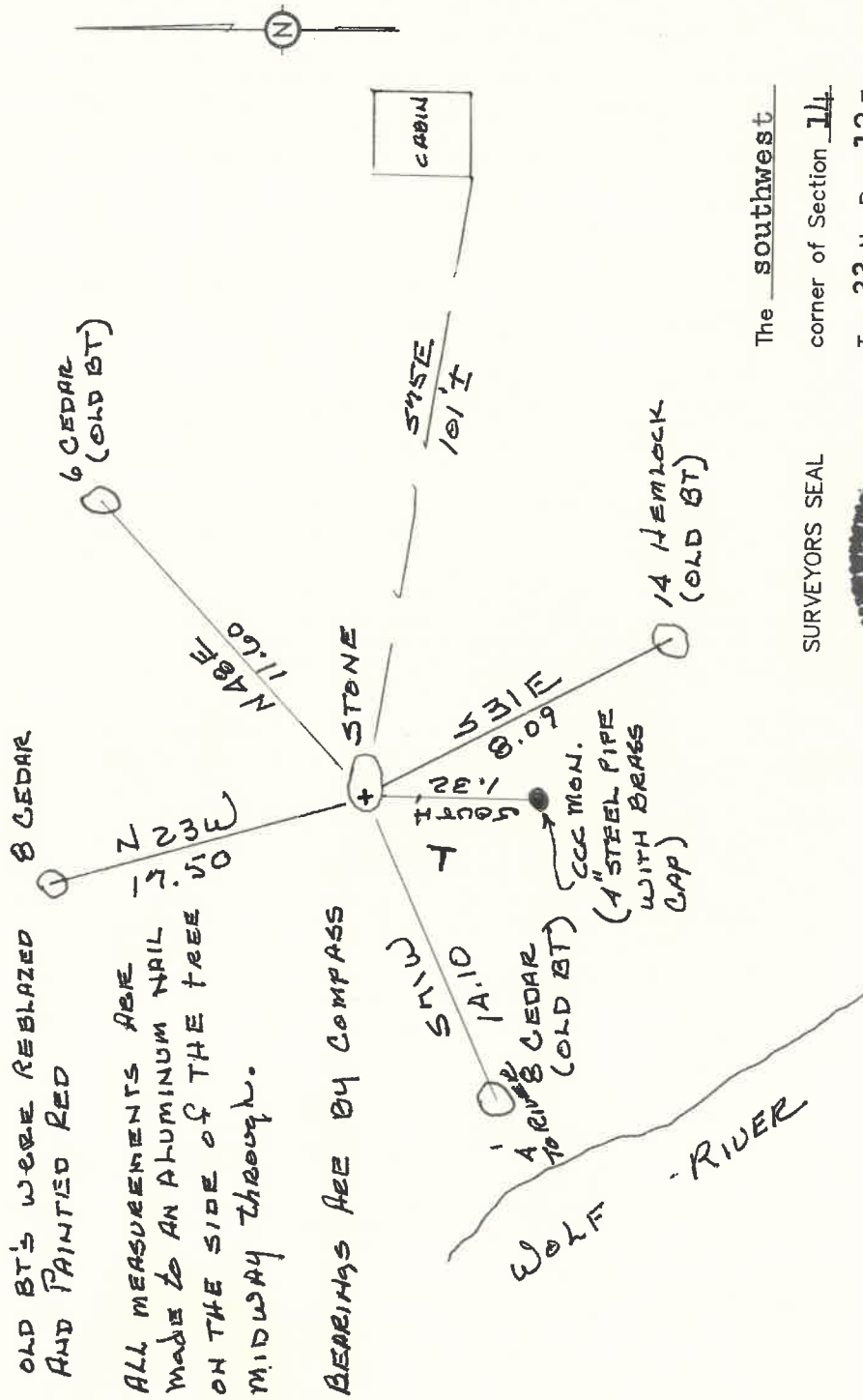
Ray Hallisy set witness trees to the Stone in 1980

12 Hemlock S32E 7'9"
6 cedar N48E 11'4"
8 cedar S69W 14'

Physical description of the monument set:

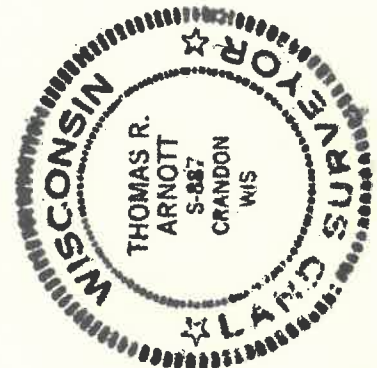
Found stone monument with X on top. Stone measures 0.70 around and is 0.65 out of the ground. C.C.C. monument was set south of stone 2 Lks.

Describe the accessories used to perpetuate the location of the corner. Include a plan view drawing and indicate accessories found/set. Describe measuring point on bearing trees. Show any topographic features that would aid in future recovery of the corner.

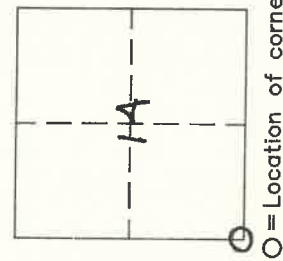


I, Thomas R. Arnott, certify that the corner location shown on this record was determined by me or under my direction and control and that this U.S. Public Land Survey Monument Record is correct and complete to the best of my knowledge and belief.

Thomas R. Arnott 24 May 1999
Signature Date



INDEX No. 3312/50000
N17



The southwest corner of Section 14, T. 33 N., R. 12 E., Langlade County, WI

SURVEYORS SEAL

CERTIFIED LAND CORNER RESTORATION

Index No. N-17

State of Wisconsin }
County of Langlade } ss.

I Raymond J. Hallisy, do hereby certify that on the 20th day of December, 1980, I found evidence of the Section corner of 14, 15, 22, & 23 Township 33, North, Range 12E, Fourth Principal Meridian, as described hereon; and that from this evidence I established a new monument and accessories as described hereon to perpetuate the original location of this corner.

Resident witnesses:

.....
.....
.....

History of original corner establishment:

Corner set in the 1930 resurvey.

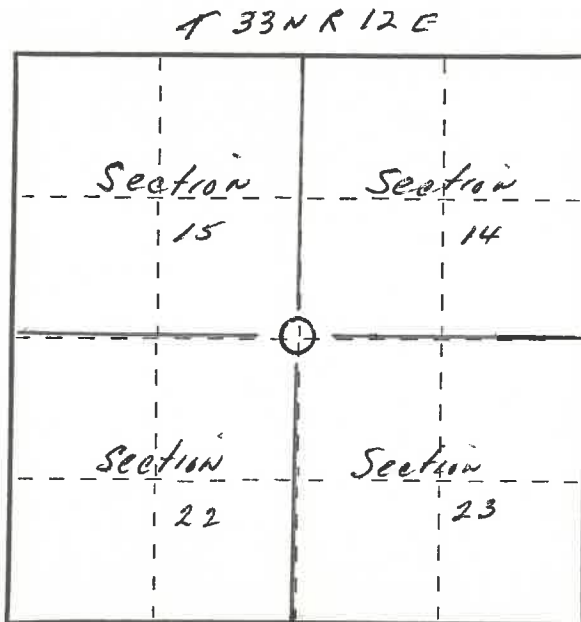
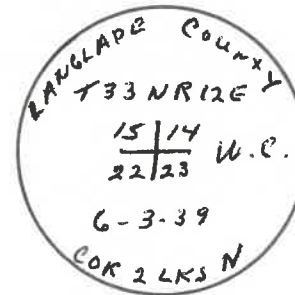
Description of corner evidence found:

4" pipe with brass cap as witness corner 2 links south of Stone with X

Description of monument and accessories I established to perpetuate the original location of this corner.

New BT's

- 12" Hemlock S32E 7'9"
- 6" Cedar N48E 11'4"
- 8" Cedar S69W 14'



○ = Corner monument restored.

Dated at Antigo, Wis., this 20th day of December, 1980

Signature Raymond J. Hallisy Title Reg. Surveyor Registration No. S-685
(County Surveyor, Registered Land Surveyor, or other duly authorized official)

Office of Register of Deeds, County of _____, I hereby certify that the within instrument was filed in this office for record on the _____ day of _____, 19____ at _____ o'clock _____ M.

.....
(Register of Deeds)

By.....Deputy

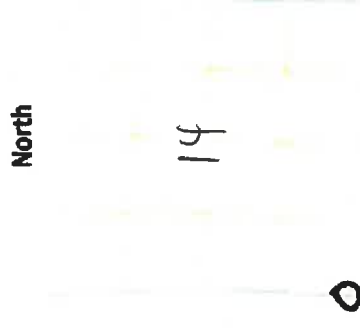
FORM 985 R. C. MILLER CO., MILWAUKEE

PLSS field condition report

Date: 4-23-20 Time of day: 9:00 am

By: Cory Bullock

Section 14 Town 33 N Range 12 E
(circle corner location on diagram)



Does the monument appear to be tilted, smashed, uprooted, covered or otherwise damaged by the windstorm?
YES NO

Are any bearing trees broken, uprooted, missing or otherwise damaged by the windstorm? YES NO

4331215 0000

TAKE PICTURES

For the first four pictures, do them in this order:

Looking north, looking east, looking south, looking west and, by standing about 6 feet behind the monument, include the monument in each picture.

Then take a picture of the top of the monument, close enough to be able to read what is stamped on the cap. Make sure all pictures are in focus.

N17
33-12