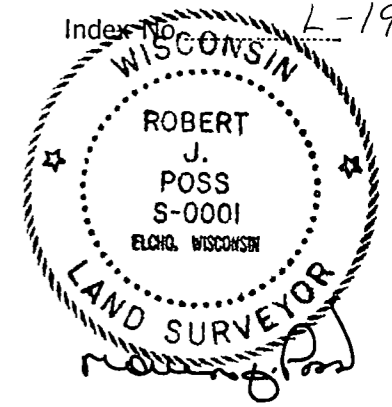


CERTIFIED LAND CORNER RESTORATION

33-12

L-19



State of Wisconsin }
County of LANGLADE } ss.

I, ROBERT J. POSS, do hereby certify that on the 3RD day of JUNE, 1968, I found evidence of the 1/4 corner of CENTER SECTION 14 Township 33, North, Range 12 EAST, Fourth, Principal Meridian, as described hereon; and that from this evidence I established a new monument and accessories as described hereon to perpetuate the original location of this corner.

History of original corner establishment:

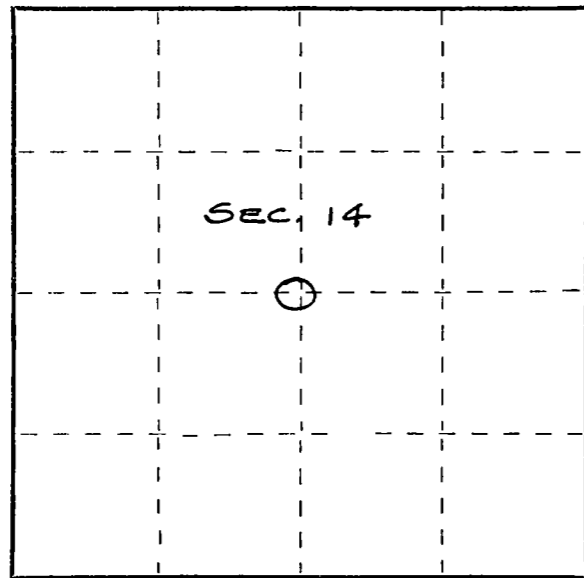
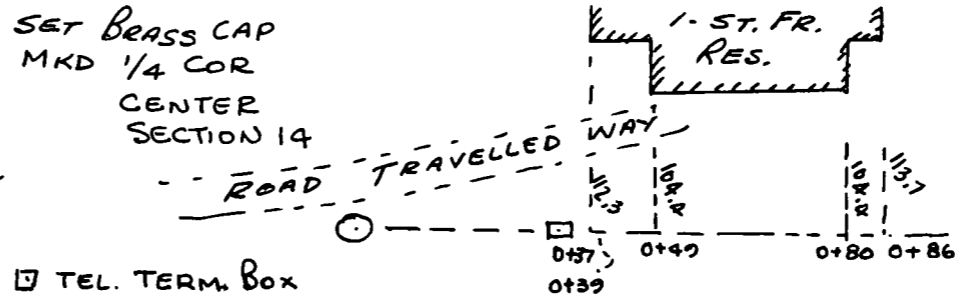
Description of corner evidence found:

FOUND IRON PIPE - WHICH WAS SET BY CHARLES WORTH ET AL. DURING NOURIVER WATER POWER SURVEY IN 1932.

Resident witnesses:

.....
.....
.....

Description of monument and accessories I established to perpetuate the original location of this corner.



○ = Corner monument restored.

Dated at ELCHO, Wis., this 4TH day of JUNE, 1968.

Signature Robert J. Poss Title REG. LAND SURVEYOR Registration No. 5-1
(County Surveyor, Registered Land Surveyor, or other duly authorized official)

Office of Register of Deeds, County of....., I hereby certify that the within instrument was filed in this office for record on the..... day of....., 19..... at..... o'clock..... M.

.....
(Register of Deeds)

By..... Deputy

FORM 985 H. C. MILLER CO., MILWAUKEE