

# U.S. PUBLIC LAND SURVEY MONUMENT RECORD

(Prepared and as required by S. A-E 7.08 WI Administrative Code)

43312142000

Corner was: (check all that apply)

- Restored through acceptance of an obliterated evidence location
- Restored through acceptance of a found perpetuated location
- Determined to be lost and reestablished through proportionate methods.  
(Show bearings and distances to PLSS corners used for proportioning)
- Restored/recovered/reestablished in a location that differs from a previously established position. (Show difference in plan view below.)
- Check here if additional information is shown on the reverse side of this form

Describe record evidence, recovered physical evidence, occupational evidence, testimonial evidence and all other evidence considered in the recovery/restoration of corner.

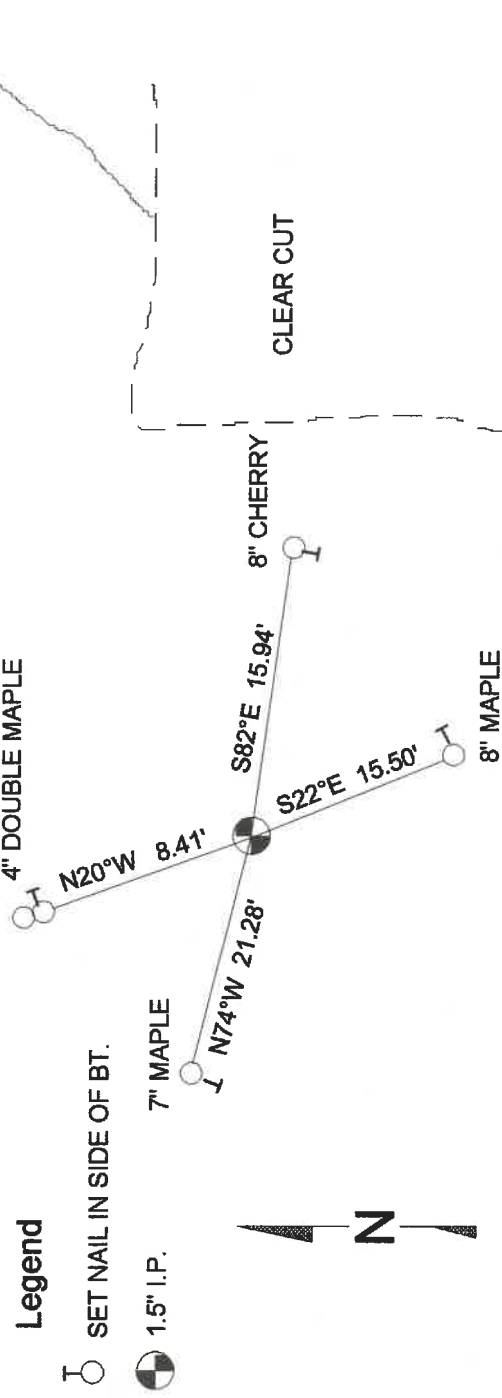
1865 - Original Corner established by James L. Nowlin  
Original BT's : birch, 10", S5°E, 20 lks.  
Original BT's : hemlock, 15", N45°W, 15 lks.

Physical description of the monument set:

2004 - Dean A. Williams found 1.5" iron pipe, projecting one foot above ground.  
Accepted as best possible evidence of corner location

Found 1.3" Iron Pipe .5 feet below road surface and two of Kelly ties.  
Retief and accepted as best possible evidence of corner location.

Describe the accessories used to perpetuate the location of the corner. Include a plan view drawing and indicate accessories found/set. Describe measuring point on bearing trees. Show any topographic features that would aid in future recovery of the corner.



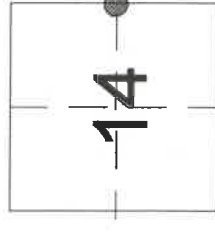
BEARINGS REFERENCED MAGNETIC

I, Dean A. Williams RLS 2468, certify that the corner location shown on this record was determined by me or under my direction and control and that this U.S. Public Land Survey Record is correct and complete to the best of my knowledge and belief.

*Dean Williams* 8/16/04  
Signature Date



The East 1/4  
corner of Section 14  
T.33N., R. 12E.,  
Langlade County, WI



● = Location of corner

INDEX NO. L21

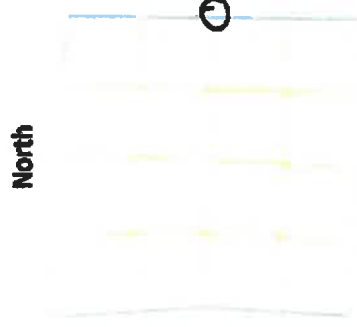
PLSS field condition report

Date: 4-28-20 Time of day: 9:30 am

By: Casey Burkhead

Section 14 Town 33N Range 12E

(circle corner location on diagram)



Does the monument appear to be tilted, smashed, uprooted, covered or otherwise damaged by the windstorm?

YES

NO

Are any bearing trees broken, uprooted, missing or otherwise damaged by the windstorm?

YES

NO

4331214 2000

The double maple and cherry both broke off.

TAKE PICTURES

For the first four pictures, do them in this order:

Looking north, looking east, looking south, looking west and, by standing about 6 feet behind the monument, include the monument in each picture.

Then take a picture of the top of the monument, close enough to be able to read what is stamped on the cap. Make sure all pictures are in focus.

L21 33-12