

U.S. PUBLIC LAND SURVEY MONUMENT RECORD

(Prepared and as required by S. A-E 7.08 WI Administrative Code)

The South 1/4 corner of Section 14, T. 33 N., R. 12 E., Langlade County, WI

Corner was: (check all that apply)

- Restored through acceptance of an obliterated evidence location.
 - Restored through acceptance of a found perpetuated location.
 - Determined to be lost and re-established through proportionate methods.
(Show bearings and distances to PLSS corners used for proportioning.)
 - Restored/recovered/reestablished in a location that differs from a previously established position. (Show difference in plan view below.)
 - Check here if additional information is shown on the reverse side of this form.
- Describe record evidence, recovered physical evidence, occupational evidence, testimonial evidence and all other evidence considered in the recovery/restoration of the corner.

Originally monumented by J. Nowlin in May 1865.

Cedar 10 N18E 15 (no evidence)

Hemlock 12 S4W 10 (no evidence)

Monumented in 1939 by the C.C.C.

Ray Hallisy recovered the 4" steel pipe with the brass cap and made new ties.

Elm 6 S47W 110 Lks (dead and has fallen down)

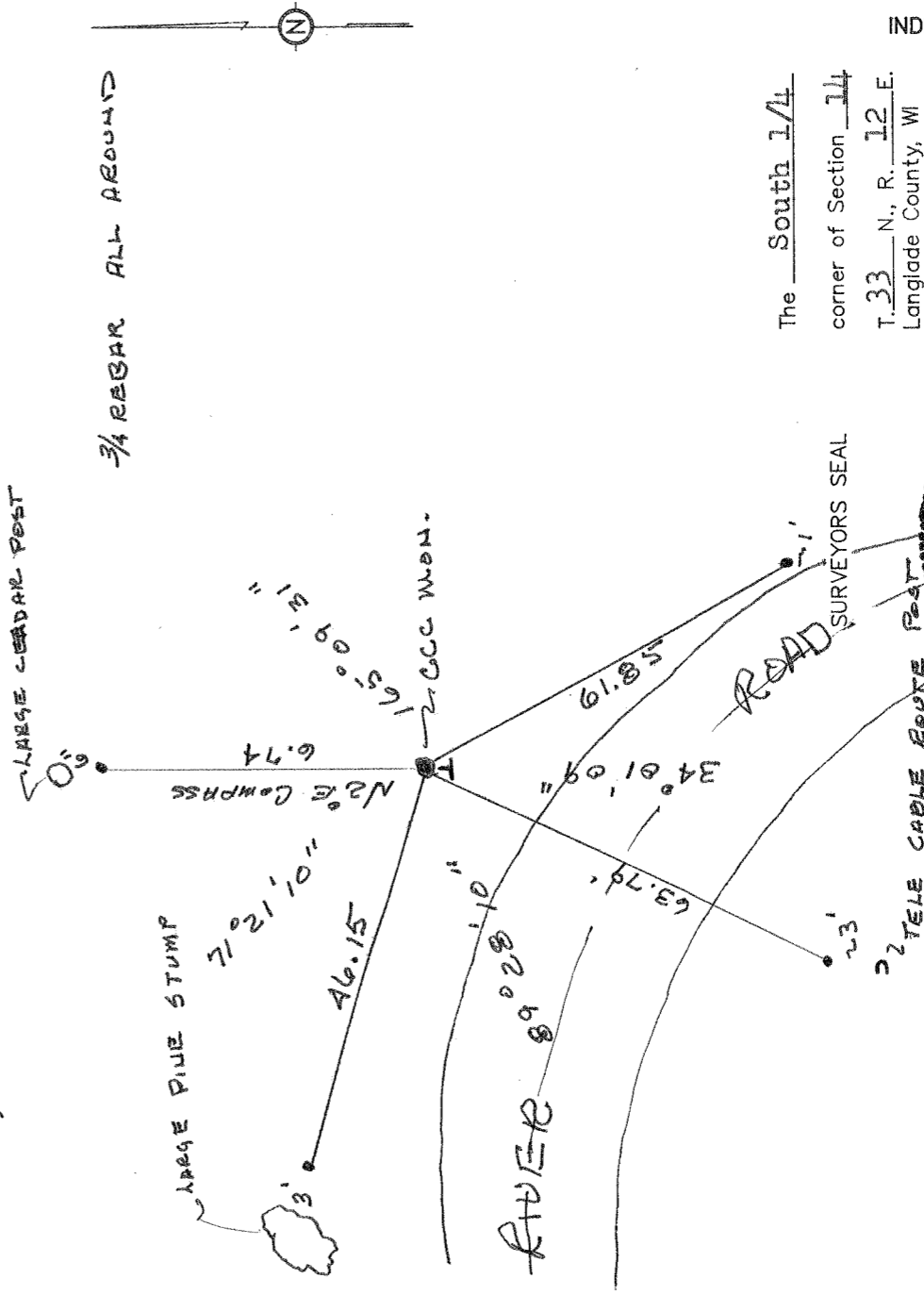
Elm 10 N47W 130 Lks. (dead and has fallen down)

Physical description of the monument set:

Found 4" steel pipe with brass cap 6" below ground level.

No new monument set.

Describe the accessories used to perpetuate the location of the corner. Include a plan view drawing and indicate accessories found/set. Describe measuring point on bearing trees. Show any topographic features that would aid in future recovery of the corner.



I, Thomas R. Arnott, certify that the corner location shown on this record was determined by me or under my direction and control and that this U.S. Public Land Survey Monument Record is correct and complete to the best of my knowledge and belief.

Thomas R. Arnott
Signature

24 May 1999

Date

3312140020

INDEX No. N19

The South 1/4 corner of Section 14 T. 33 N., R. 12 E. Langlade County, WI

