

CERTIFIED LAND CORNER RESTORATION

33-12

Index No. N-19

State of Wisconsin }
County of Lanai } ss.

History of original corner establishment:

Corner set in the 1930 resurvey

I Raymond Hallisy, do hereby certify that on the 21st day of April, 1973, I found evidence of the 1/4 corner of Section 14 & 23 Township T33, North, Range 12E, Fourth, Principal Meridian, as described hereon; and that from this evidence I established a new monument and accessories as described hereon to perpetuate the original location of this corner.

Description of corner evidence found:

Pine STP. BT 40" N 72W 74.5 LKS MARKS gone
4" Brass cap below ground level

Resident witnesses:

.....
.....
.....

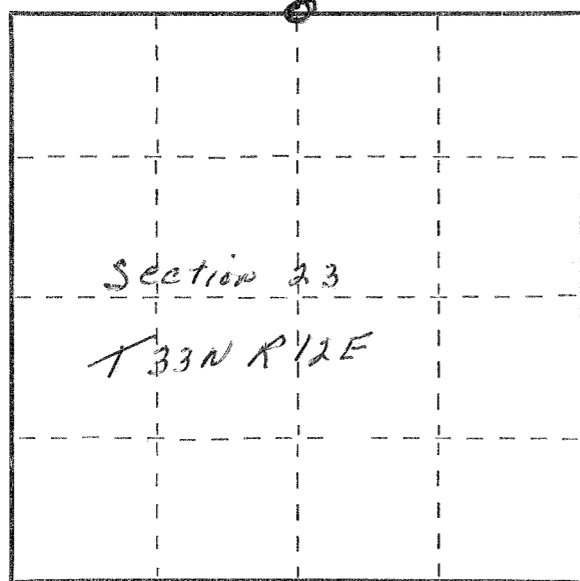
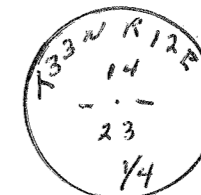
Description of monument and accessories I established to perpetuate the original location of this corner.

Reset 4" Brass cap even with ground

New BT's

E1M 6" S 47W 110 LKS

E1M 10" N 47W 130 LKS



Dated at Antigo, Wis., this 21st day of April, 1973.

Signature Raymond Hallisy Title R. Land Surveyor Registration No. 5685
(County Surveyor, Registered Land Surveyor, or other duly authorized official)

Office of Register of Deeds, County of _____, I hereby certify that the within instrument was filed in this office for record on the _____ day of _____, 19____ at _____ o'clock _____ M.

.....
(Register of Deeds)

By _____ Deputy

○ = Corner monument restored.

FORM 985 H. C. MILLER CO., MILWAUKEE