

# U.S. PUBLIC LAND SURVEY MONUMENT RECORD

(Prepared and as required by S. A-E 7.08 WI Administrative Code)

The Southeast corner of Section 14, T. 33 N., R. 12 E., Langlade County, WI

Corner was: (check all that apply)

- Restored through acceptance of an obliterated evidence location.
- Restored through acceptance of a found perpetuated location.
- Determined to be lost and re-established through proportionate methods.  
(Show bearings and distances to PLSS corners used for proportioning.)
- Restored/recovered/reestablished in a location that differs from a previously established position. (Show difference in plan view below.)
- Check here if additional information is shown on the reverse side of this form.

**Describe record evidence, recovered physical evidence, occupational evidence, testimonial evidence and all other evidence considered in the recovery/restoration of the corner.**

Original survey done by JAMES Nowlin in 1865. At that time the bearing trees were:

- Cedar 8" N30E 20 lks. (gone)
- Cedar 12" N80W 15 lks. (gone)

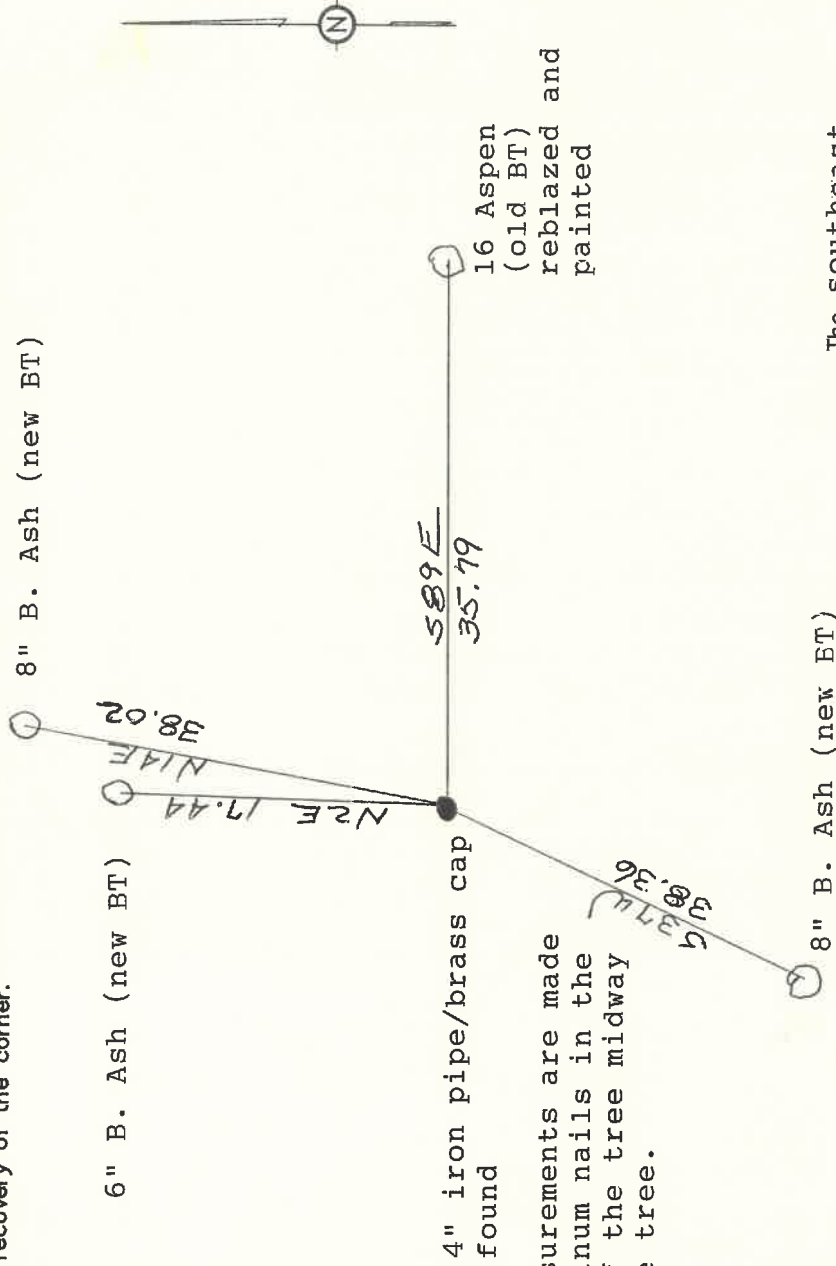
In 1976 Kelly located and made new ties to the corner.

In 1939 the C.C.C. survey crew found and remonumented the corner location with a 4" steel pipe with a brass cap.

### Physical description of the monument set:

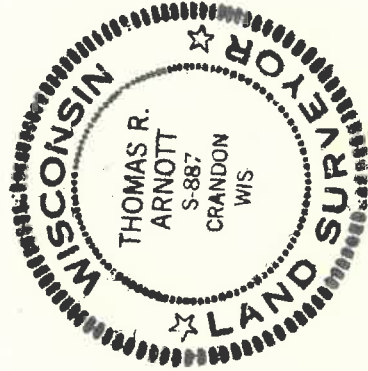
Found monument that was set by the C.C.C. crew in 1939. I straightened the monument and set it down in the ground deeper and piled stones around the monument. I renewed or made new ties.

**Describe the accessories used to perpetuate the location of the corner. Include a plan view drawing and indicate accessories found/set. Describe measuring point on bearing trees. Show any topographic features that would aid in future recovery of the corner.**



All measurements are made to aluminum nails in the sides of the tree midway thru the tree.

SURVEYORS SEAL



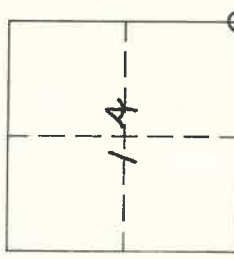
I, Thomas Arnott, certify that the corner location shown on this record was determined by me or under my direction and control and that this U.S. Public Land Survey Monument Record is correct and complete to the best of my knowledge and belief.



Signature 24 June 1999

Date

INDEX No. N 21



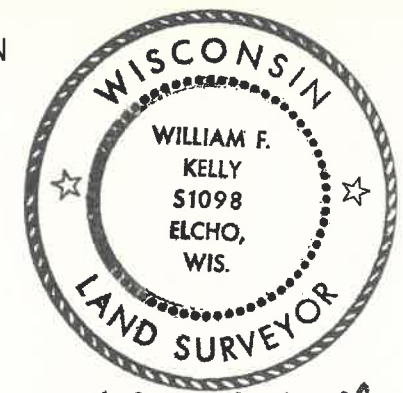
O = Location of corner

CERTIFIED LAND CORNER RESTORATION

Index No. N-21

State of Wisconsin }  
County of LANGLADE } ss.

History of original corner establishment:



*William F. Kelly*

I WILLIAM F KELLY, do hereby certify that on the 13<sup>TH</sup> day of AUGUST, 19 76, I found evidence of the SECTION corner of SECTIONS 13, 24, 23, 14 Township 33, North, Range 12E, Fourth Principal Meridian, as described hereon; and that from this evidence I established a new monument and accessories as described hereon to perpetuate the original location of this corner.

Description of corner evidence found:

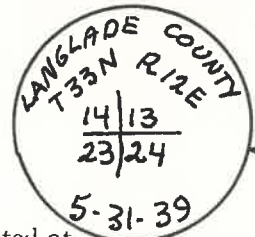
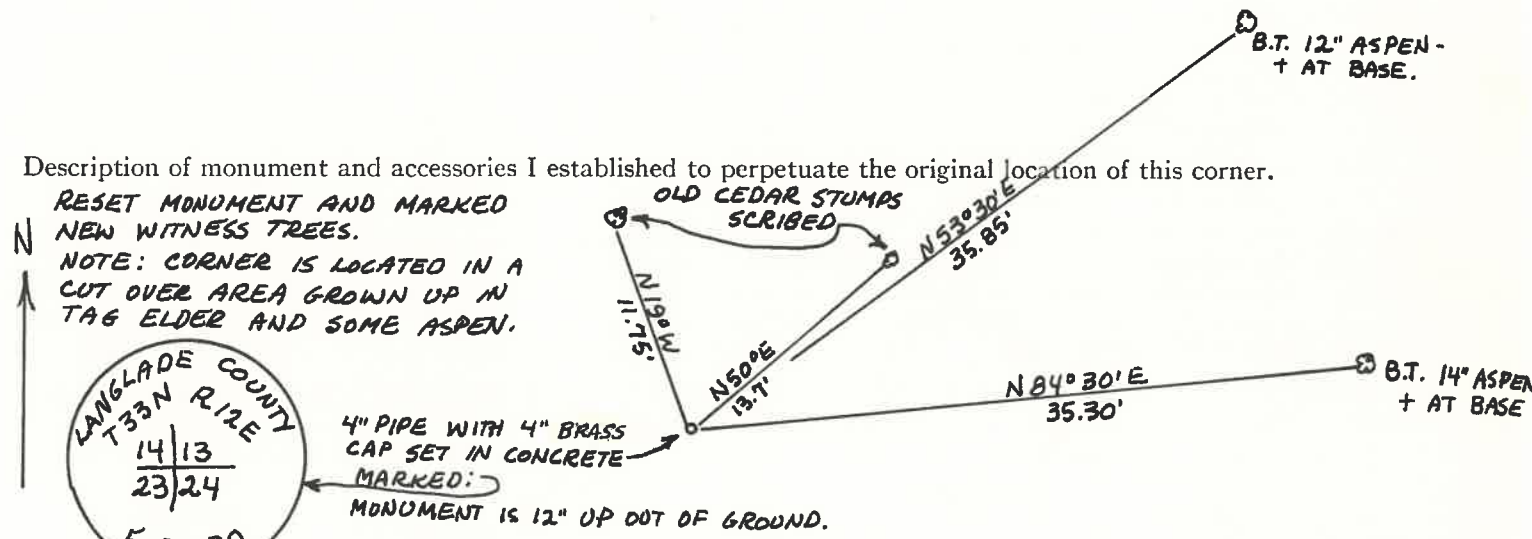
OLD SCRIBED WITNESS TREES, SCRIBED WOOD POST ON GROUND AND BRASS CAP MONUMENT LYING ON ITS SIDE UNDER A WINDFALL.

Resident witnesses:

E. MONTOUR

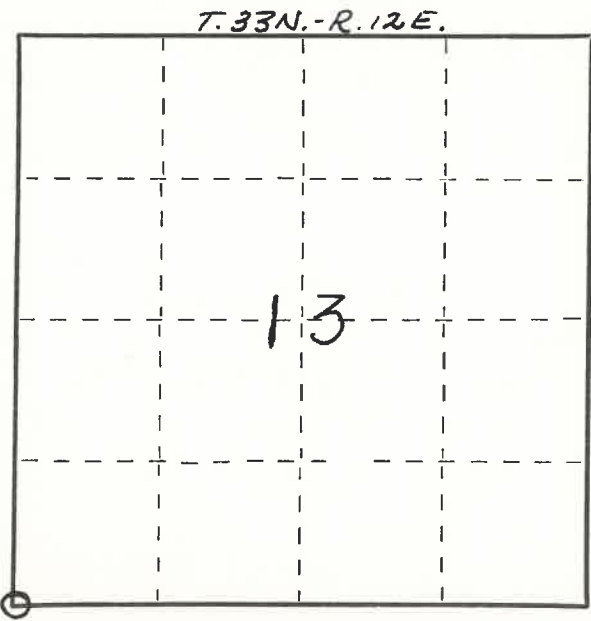
Description of monument and accessories I established to perpetuate the original location of this corner.

RESET MONUMENT AND MARKED NEW WITNESS TREES.  
NOTE: CORNER IS LOCATED IN A CUT OVER AREA GROWN UP IN TAG ELDER AND SOME ASPEN.



4\"/>

FORM 985 H. C. MILLER CO., MILWAUKEE



○ = Corner monument restored.

Dated at ELCHO, Wis., this 13<sup>TH</sup> day of AUGUST, 19 76

Signature William F. Kelly Title REGISTERED LAND SURVEYOR Registration No. 51098  
(County Surveyor, Registered Land Surveyor, or other duly authorized official)

Office of Register of Deeds, County of \_\_\_\_\_, I hereby certify that the within instrument was filed in this office for record on the \_\_\_\_\_ day of \_\_\_\_\_, 19 \_\_\_\_\_ at \_\_\_\_\_ o'clock \_\_\_\_\_ M.

(Register of Deeds)

By \_\_\_\_\_ Deputy

PLSS field condition report

Date: 4-28-20 Time of day: 8:15 am

By: Cory Rukland

Section 14 Town 33 N Range 12 E  
(circle corner location on diagram)

Does the monument appear to be tilted, smashed, uprooted, covered or otherwise damaged by the windstorm?  
YES  NO

Are any bearing trees broken, uprooted, missing or otherwise damaged by the windstorm?  
YES  NO

TAKE PICTURES

For the first four pictures, do them in this order:

Looking north, looking east, looking south, looking west and, by standing about 6 feet behind the monument, include the monument in each picture.

Then take a picture of the top of the monument, close enough to be able to read what is stamped on the cap. Make sure all pictures are in focus.



433/214 0000

The old Aspen bearing tree is gone (stump still present), all the new bearing trees are undamaged.

N 21 33-12