

CERTIFIED LAND CORNER RESTORATION

Index No. N-21

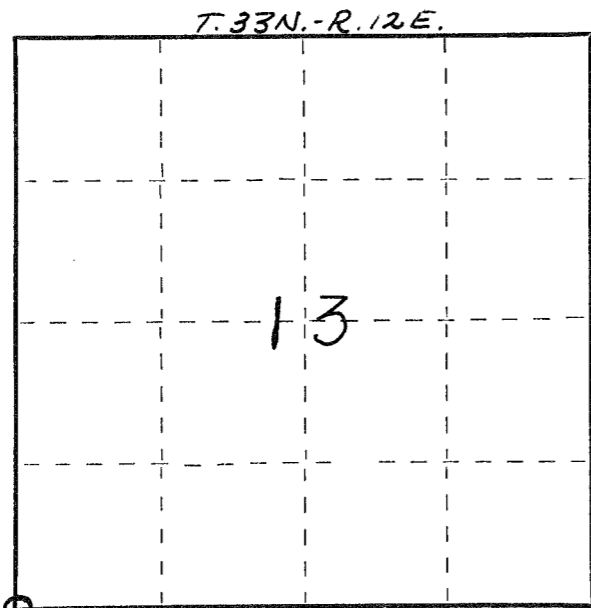
State of Wisconsin }  
County of LANGLADE } ss.

I WILLIAM F KELLY, do hereby certify that on the 13<sup>TH</sup> day of AUGUST, 19 76, I found evidence of the SECTION corner of SECTIONS 13, 24, 23, 14 Township 33, North, Range 12E, Fourth Principal Meridian, as described hereon; and that from this evidence I established a new monument and accessories as described hereon to perpetuate the original location of this corner.

Resident witnesses:

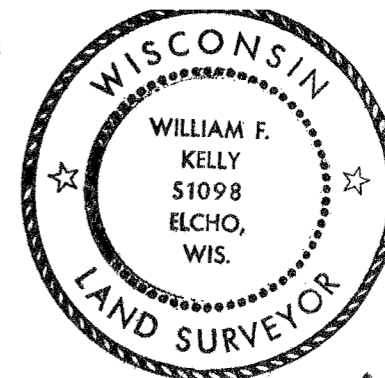
E. MONTOUR

FORM 985 W. C. MILLER CO., MILWAUKEE



○ = Corner monument restored.

History of original corner establishment:



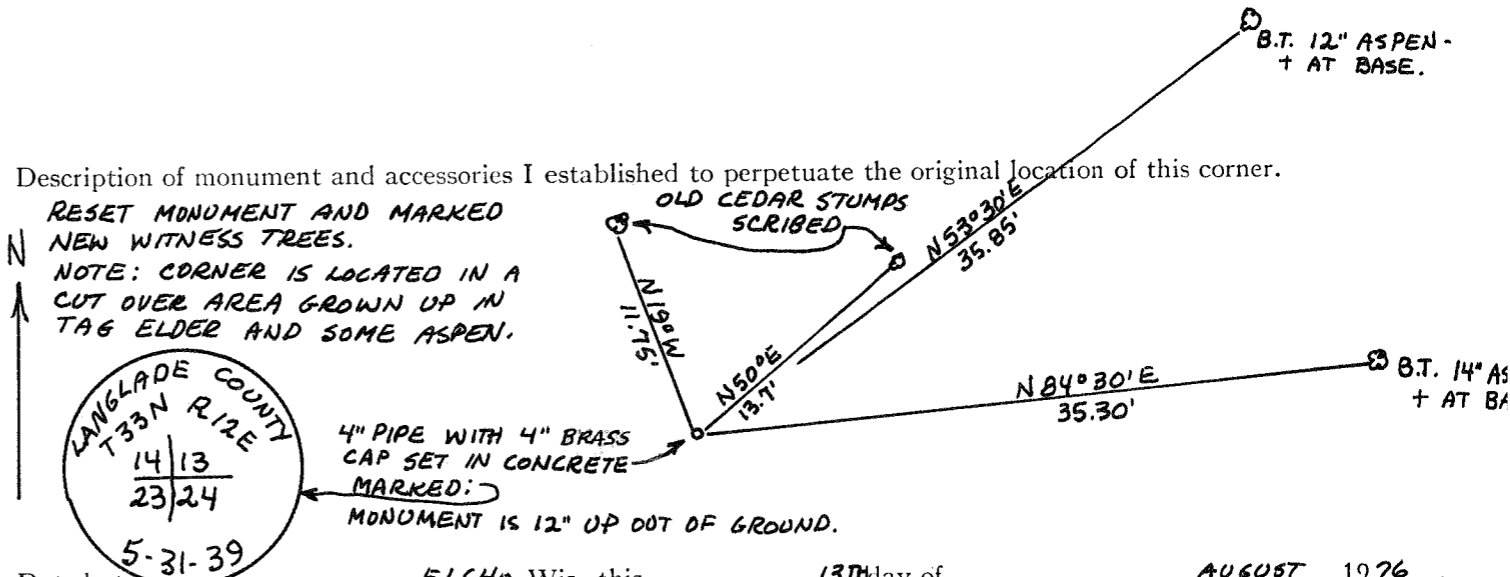
*William F. Kelly*

Description of corner evidence found:

OLD SCRIBED WITNESS TREES, SCRIBED WOOD POST ON GROUND AND BRASS CAP MONUMENT LYING ON ITS SIDE UNDER A WINDFALL.

Description of monument and accessories I established to perpetuate the original location of this corner.

RESET MONUMENT AND MARKED NEW WITNESS TREES.  
NOTE: CORNER IS LOCATED IN A CUT OVER AREA GROWN UP IN TAG ELDER AND SOME ASPEN.



Dated at ELCHO, Wis., this 13<sup>TH</sup> day of AUGUST, 1976.

Signature William F. Kelly Title REGISTERED LAND SURVEYOR Registration No. 51098  
(County Surveyor, Registered Land Surveyor, or other duly authorized official)

Office of Register of Deeds, County of \_\_\_\_\_, I hereby certify that the within instrument was filed in this office for record on the \_\_\_\_\_ day of \_\_\_\_\_, 19\_\_\_\_ at \_\_\_\_\_ o'clock \_\_\_\_\_ M.

\_\_\_\_\_  
(Register of Deeds)  
By \_\_\_\_\_ Deputy