

CERTIFIED LAND CORNER RESTORATION

Index No. L-25

State of Wisconsin }
County of Lan glade } ss.

History of original corner establishment:

I Raymond J. Hallisy, do hereby certify that on the 9th day of January, 1982, I found evidence of the 1/4 corner of Section 13 & 18 Township 33, North, Range 12E & 13E, Fourth Principal Meridian, as described hereon; and that from this evidence I established a new monument and accessories as described hereon to perpetuate the original location of this corner.

Description of corner evidence found:

1" iron pipe

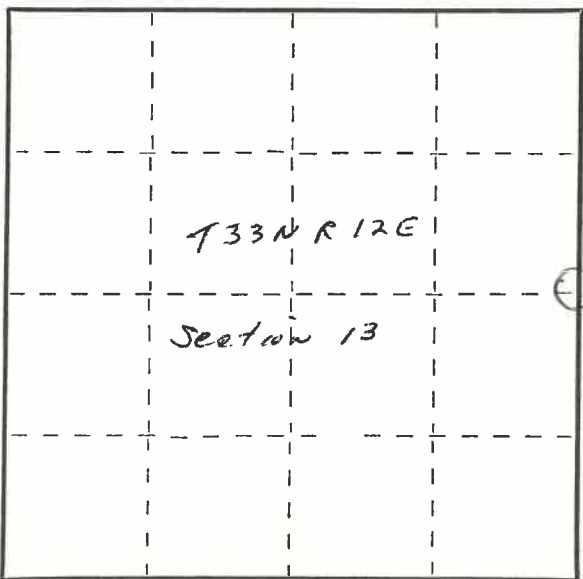
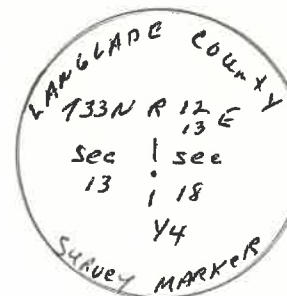
Resident witnesses:

.....
.....
.....

Description of monument and accessories I established to perpetuate the original location of this corner.

Set 2" Aluminum pipe with cap.

New BT's			
10"	Cherry	S8E	13.4'
8"	"	S40W	18.9'
7"	Balsam	N70E	2.9'
8"	Cherry	S80E	19.6'



○ = Corner monument restored.

Dated at ANTIGO, Wis., this 9th day of JANUARY, 1982.

Signature Raymond J. Hallisy Title Land Surveyor Registration No. S-685
(County Surveyor, Registered Land Surveyor, or other duly authorized official)

Office of Register of Deeds, County of....., I hereby certify that the within instrument was filed in this office for record on the.....day of....., 19..... at.....o'clock..... M.

.....
(Register of Deeds)

By.....Deputy

PLSS field condition report

Date: 4-22-20 Time of day: 12:30 PM

By: Cary Rubstead

Section 13 Town 33N Range 12E
(circle corner location on diagram)

North



Does the monument appear to be tilted, smashed, uprooted, covered or otherwise damaged by the windstorm?
YES NO

Are any bearing trees broken, uprooted, missing or otherwise damaged by the windstorm? YES NO

All bearing trees uprooted/broken.

4331213 2000

TAKE PICTURES

For the first four pictures, do them in this order:

Looking north, looking east, looking south, looking west and, by standing about 6 feet behind the monument, include the monument in each picture.

Then take a picture of the top of the monument, close enough to be able to read what is stamped on the cap. Make sure all pictures are in focus.

425 33-12