

CERTIFIED LAND CORNER RESTORATION

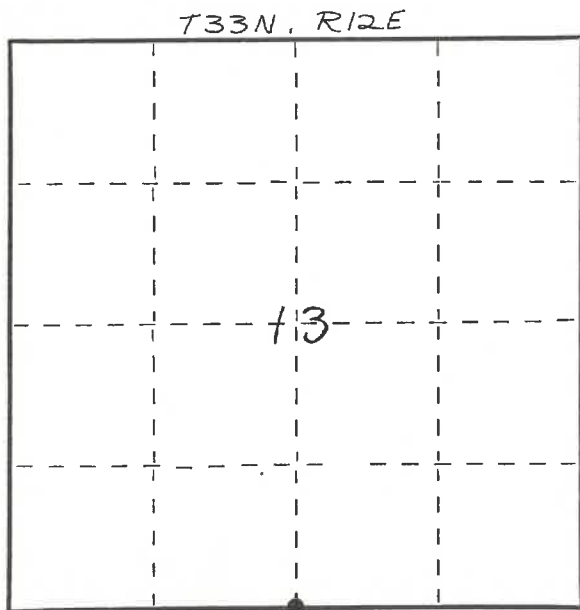
Index No. N-23

State of Wisconsin }  
 County of LANGLADE } ss.

I WILLIAM F. KELLY, do hereby certify that on the 28<sup>th</sup> day of JULY, 1982, I found evidence of the S. 1/4 corner of SECT. 13 Township 33, North, Range 12 EAST, Fourth Principal Meridian, as described hereon; and that from this evidence I established a new monument and accessories as described hereon to perpetuate the original location of this corner.

Resident witnesses:

.....  
 .....



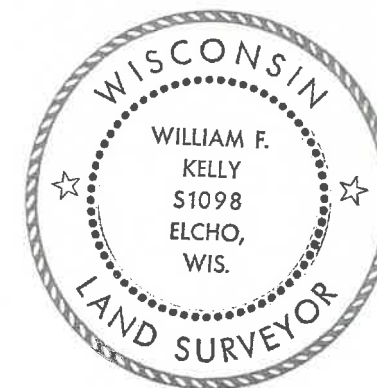
○ = Corner monument restored.

History of original corner establishment:

ORIGINAL CORNER ESTABLISHED BY  
 JAMES L. NOWLIN IN MAY, 1865.

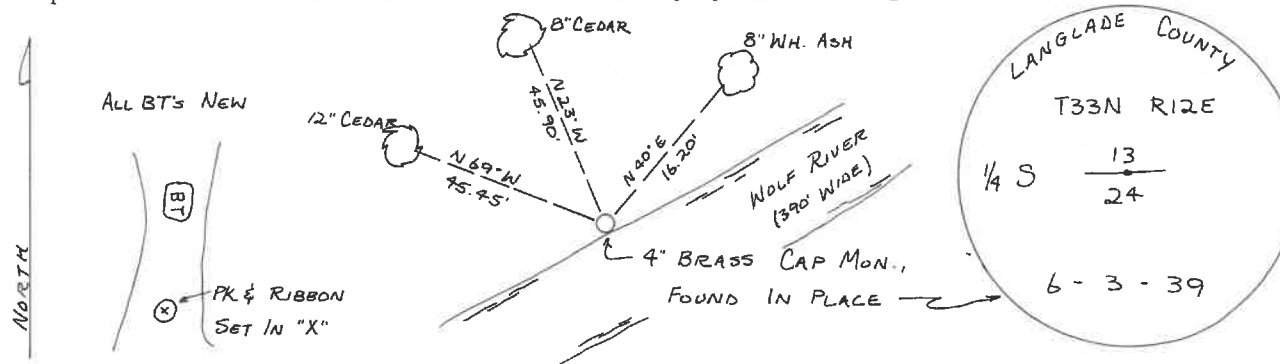
Description of corner evidence found:

4" BRASS CAP MONUMENT FOUND IN PLACE.  
 SCRIBED 3 NEW BT'S.



*William F. Kelly*

Description of monument and accessories I established to perpetuate the original location of this corner.



Dated at ELCHO, Wis., this 28<sup>th</sup> day of JULY, 1982.

Signature William F. Kelly Title COUNTY SURVEYOR Registration No. 1098  
 (County Surveyor, Registered Land Surveyor, or other duly authorized official)

Office of Register of Deeds, County of \_\_\_\_\_, I hereby certify that the within instrument was filed in this office for record on the \_\_\_\_\_ day of \_\_\_\_\_, 19\_\_\_\_ at \_\_\_\_\_ o'clock \_\_\_\_\_ M.

(Register of Deeds)

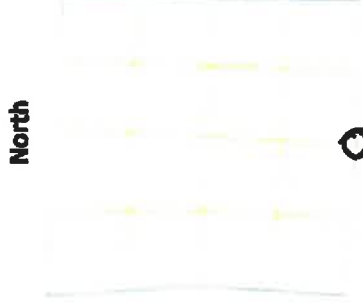
By \_\_\_\_\_ Deputy

PLSS field condition report

Date: 4-28-20 Time of day: 7:15 am

By: Cory Ruhland

Section 13 Town S3N Range 12E  
(circle corner location on diagram)



Does the monument appear to be tilted, smashed, uprooted, covered or otherwise damaged by the windstorm?  
YES  NO

Are any bearing trees broken, uprooted, missing or otherwise damaged by the windstorm?  YES  NO

4331213 0020

All bearing trees are broken. 2 is broken at the base, the other 2 are broken in the crown.

TAKE PICTURES

For the first four pictures, do them in this order:

Looking north, looking east, looking south, looking west and, by standing about 6 feet behind the monument, include the monument in each picture.

Then take a picture of the top of the monument, close enough to be able to read what is stamped on the cap. Make sure all pictures are in focus.