

CERTIFIED LAND CORNER RESTORATION

Index No. N-25

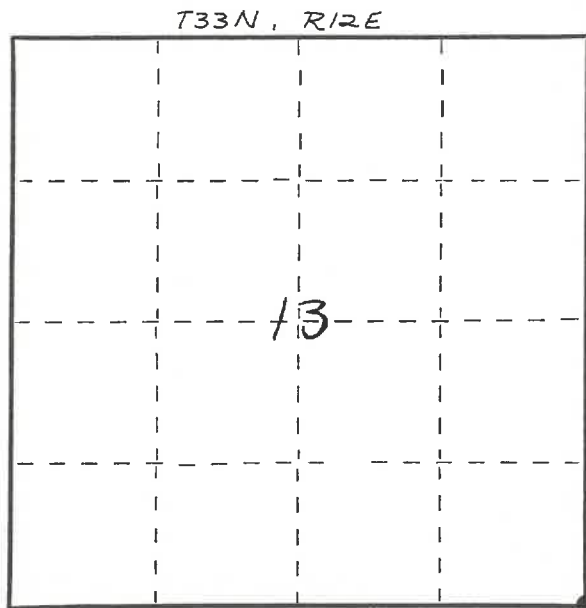
State of Wisconsin }  
County of LANGLADE } ss.

I WILLIAM F. KELLY, do hereby certify that on the 28<sup>th</sup> day of JULY, 19 82, I found evidence of the SE corner of SECT. 13 Township 33, North, Range 12 EAST, Fourth Principal Meridian, as described hereon; and that from this evidence I established a new monument and accessories as described hereon to perpetuate the original location of this corner.

Resident witnesses:

.....  
.....  
.....

FORM 985 H. C. MILLER CO., MILWAUKEE



○ = Corner monument restored.

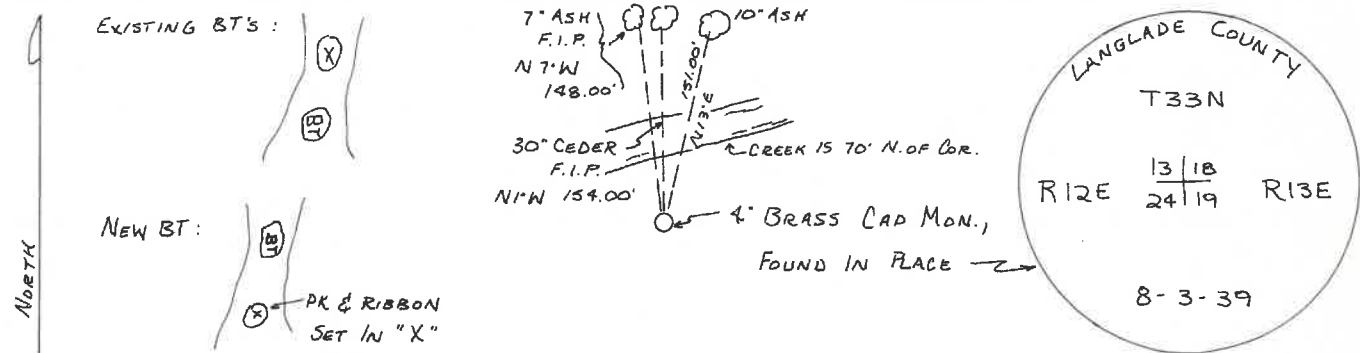
History of original corner establishment:  
ORIGINAL CORNER ESTABLISHED BY  
JAMES L. NOWLIN IN MAY 1865.

Description of corner evidence found:  
FOUND IN PLACE - 4" BRASS CAP  
MONUMENT & 2 BT'S.  
SCRIBED 1 NEW BT.



*William F. Kelly*

Description of monument and accessories I established to perpetuate the original location of this corner.



Dated at ELCHO, Wis., this 28<sup>th</sup> day of JULY, 19 82.

Signature William F. Kelly Title COUNTY SURVEYOR Registration No. 1098  
(County Surveyor, Registered Land Surveyor, or other duly authorized official)

Office of Register of Deeds, County of \_\_\_\_\_, I hereby certify that the within instrument was filed in this office for record on the \_\_\_\_\_ day of \_\_\_\_\_, 19 \_\_\_\_\_ at \_\_\_\_\_ o'clock \_\_\_\_\_ M.

(Register of Deeds)

By \_\_\_\_\_ Deputy

CERTIFIED LAND CORNER RESTORATION

Index No. N-25

State of Wisconsin }  
County of Lanlade } ss.

History of original corner establishment:

Corner set in the 1930 resurvey.

I Raymond J. Hallisy, do hereby certify that on the 9th day of January, 1982, I found evidence of the Section corner of 13, 18, 24, 19 Township 33, North, Range 12E & 13E, Fourth Principal Meridian, as described hereon; and that from this evidence I established a new monument and accessories as described hereon to perpetuate the original location of this corner.

Description of corner evidence found:

4" iron pipe with brass cap.  
BT 14" cedar stump N3W 220.5 Links (marks gone)

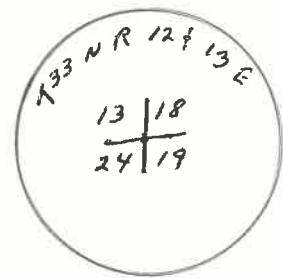
Resident witnesses:

.....  
.....  
.....

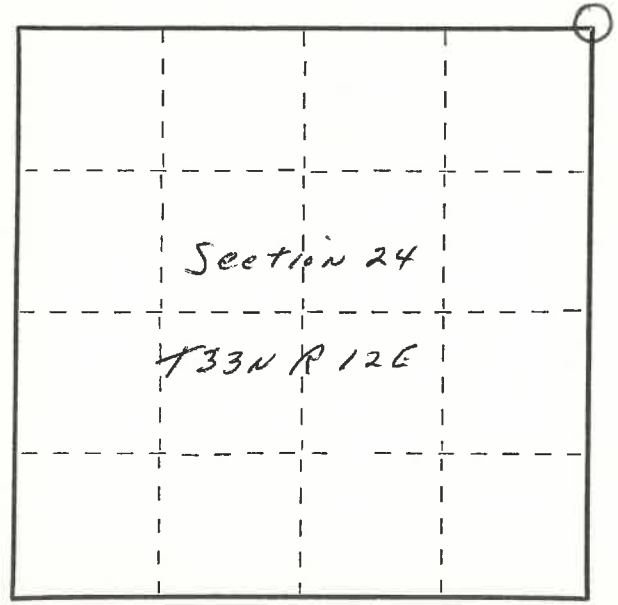
Description of monument and accessories I established to perpetuate the original location of this corner.

New BT's

24" Cedar N1E 233 Links  
7" Black Ash N6W 222.5 Links



FORM 985 H. C. MILLER CO., MILWAUKEE



○ = Corner monument restored.

Dated at Antigo, Wis., this 9th day of January, 1982

Signature Raymond J. Hallisy Title Land surveyor Registration No. S-685  
(County Surveyor, Registered Land Surveyor, or other duly authorized official)

Office of Register of Deeds, County of \_\_\_\_\_, I hereby certify that the within instrument was filed in this office for record on the \_\_\_\_\_ day of \_\_\_\_\_, 19\_\_\_\_ at \_\_\_\_\_ o'clock \_\_\_\_\_ M.

.....  
(Register of Deeds)

By \_\_\_\_\_ Deputy

PLSS field condition report

Date: \_\_\_\_\_ Time of day: \_\_\_\_\_

By: Cory Buxland

Section 13 Town 33N Range 12E  
(circle corner location on diagram)

Does the monument appear to be tilted, smashed, uprooted, covered or otherwise damaged by the windstorm?

YES

NO

Unknown

Are any bearing trees broken, uprooted, missing or otherwise damaged by the windstorm? YES NO

Unknown

TAKE PICTURES

For the first four pictures, do them in this order:

Looking north, looking east, looking south, looking west and, by standing about 6 feet behind the monument, include the monument in each picture.

Then take a picture of the top of the monument, close enough to be able to read what is stamped on the cap. Make sure all pictures are in focus.



4331213 0000

*Corner monument was inaccessible due to high water levels of the Wolf River.*

NZ5 33-12