

4331212 0000

U.S. PUBLIC LAND SURVEY MONUMENT RECORD

(Prepared and as required by S. A-E 7.08 WI Administrative Code)

The SOUTHEAST corner of Section 12, T. 33 N., R. 12 E., Langlade County, WI
Corner was (check all that apply)

- Restored through acceptance of an obliterated evidence location.
- Restored through acceptance of a found perpetuated location.
- Determined to be lost and re-established through proportionate methods. (show bearings and distances to PLSS corners used for proportioning.)
- Restored/recovered/re-established in a location that differs from a previously established position. (Show difference in plan view below.)
- Check here if additional information is shown on the reverse side of this form.

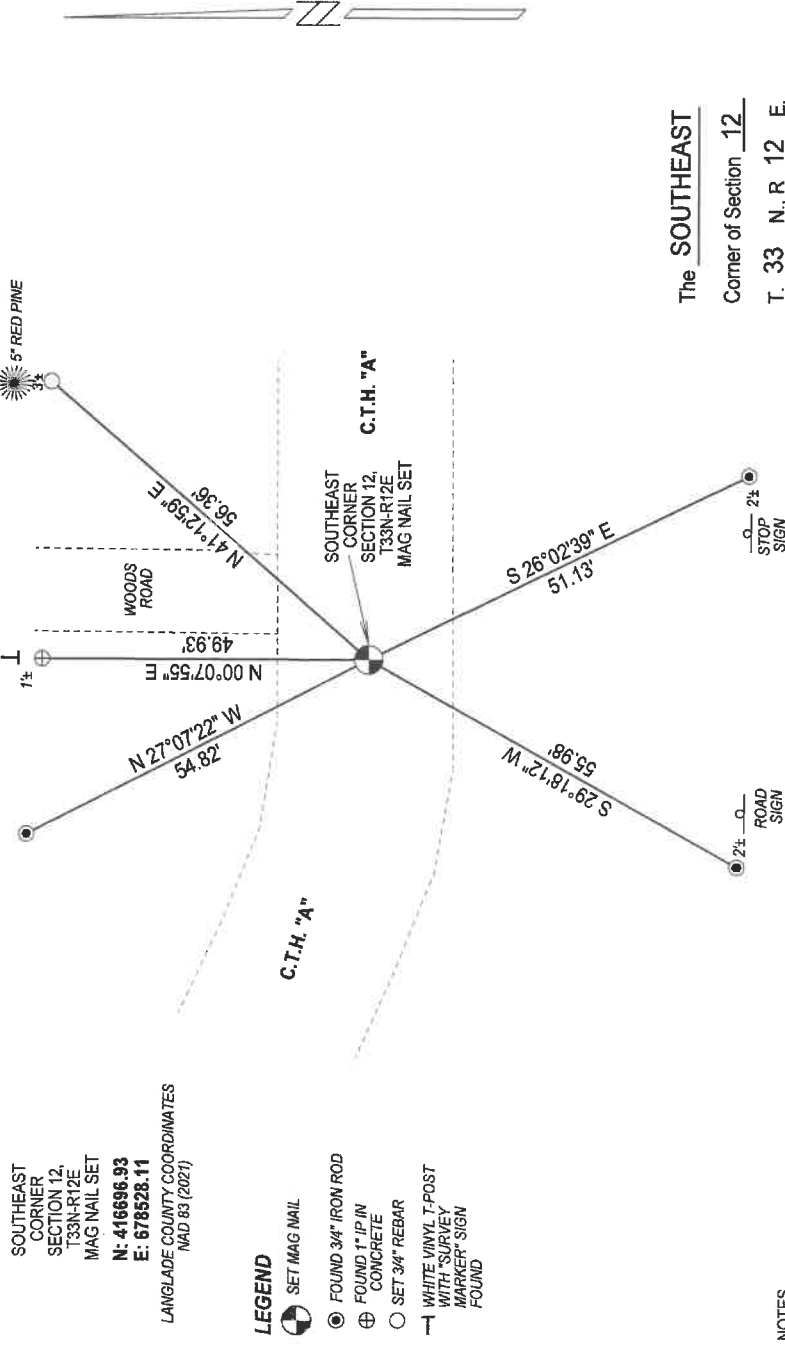
Describe record evidence, recovered physical evidence, occupational evidence, testimonial evidence, and all other evidence considered in the recovery/restoration of the corner.

- 1857 - Original corner established by A. Milliard - bearing trees: Hemlock, 24", N32°W, 17 links, Hemlock, 12", S57°W, 39 links, Sugar, 10", S52°E, 25 links and a Hemlock, 24", East, 28 links.
- 1968 - R. Poss "found iron - by Peters & Highway Commission". Poss references a brass in concrete witness monument 50' north of corner and filed a tie sheet.
- 2006 - D. Tlusty found a copy of Tom Arnott's field notes for this corner. He set a railroad spike at the corner, set new ties but did not prepare a new corner form.
- 2022 - I found 4 of the ties referenced by Arnott and set a mag nail above Arnott's railroad spike.

Physical description of the monument set:

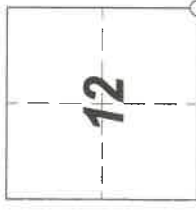
I set a mag nail at the corner location and tied it out as shown below.

Describe the accessories used to perpetuate the location of the corner. Include a plan view drawing and indicate accessories found/set. Describe measuring point on bearing trees. Show any topographic features that would aid in future recovery of the corner.



NOTES
 - SKETCH NOT DRAWN TO SCALE.
 - TIE BEARINGS SHOWN ARE LANGLADE COUNTY GRID BEARINGS.
 - ALL TIES MEASURED ELECTRONICALLY WITH TOTAL STATION.

The SOUTHEAST
 Corner of Section 12
 T. 33 N., R. 12 E.,
 Langlade County, WI



○ = Location of corner

SURVEYORS SEAL



I, Michael J. Hoffman, certify that the corner location shown on this record was determined by me or under my direction and control and that this U.S. Public Land Survey Monument Record is correct and complete to the best of my knowledge and belief.

Michael J. Hoffman 12/12/2022 Date
 Signature

CERTIFIED LAND CORNER RESTORATION

33-12

Index No. J-25

State of Wisconsin }
County of LANGLADE } ss.

History of original corner establishment:

I, ROBERT J. POSS, do hereby certify that on the 20TH day of JUNE, 1968, I found evidence of the SECTION corner of SECS. 12-7-18-13 Township 33, North, Ranges 12 & 13 EAST, Fourth, Principal Meridian, as described hereon; and that from this evidence I established a new monument and accessories as described hereon to perpetuate the original location of this corner.

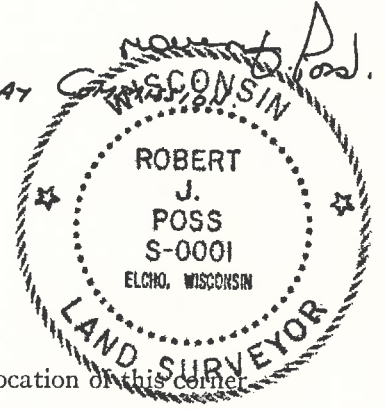
Description of corner evidence found:

FOUND IRON - BY PETERS - & HIGHWAY

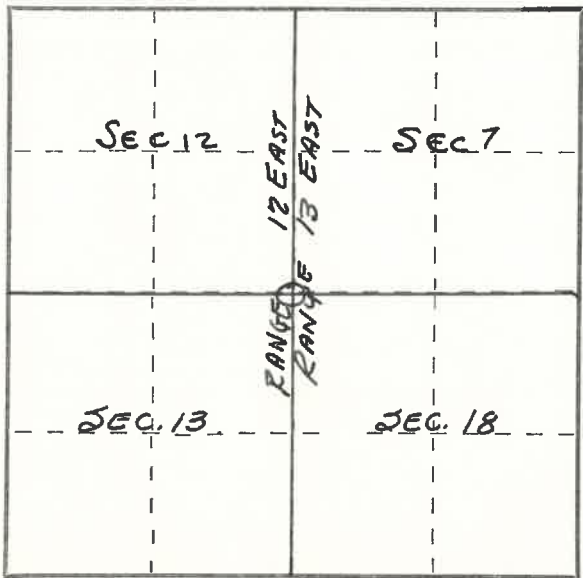
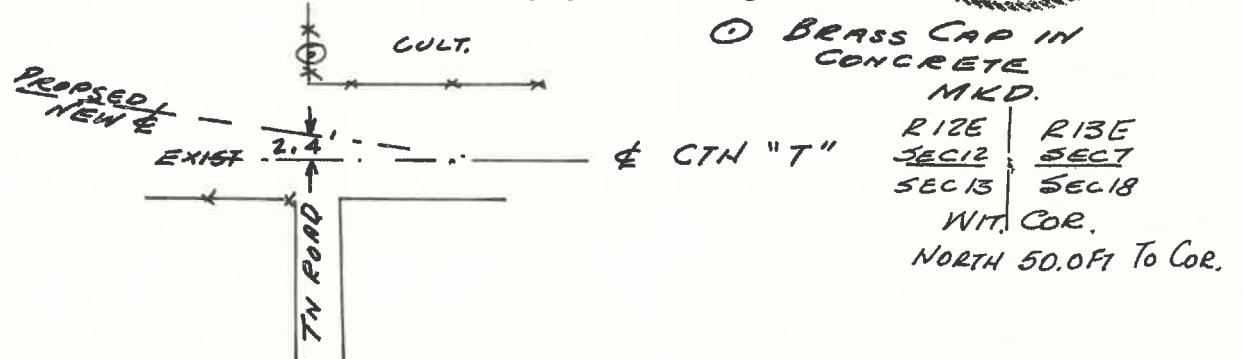
SEE SKETCH ON REVERSE
1/4/06 D. Platty

Resident witnesses:

.....
.....
.....



Description of monument and accessories I established to perpetuate the original location of this corner



Dated at ELCHO, Wis., this 21ST day of JUNE, 1968.

Signature Robert J. Poss Title REG. LAND SURVEYOR Registration No. 5-1
(County Surveyor, Registered Land Surveyor, or other duly authorized official)

Office of Register of Deeds, County of _____, I hereby certify that the within instrument was filed in this office for record on the _____ day of _____, 19____ at _____ o'clock _____ M.

(Register of Deeds)

By _____ Deputy

○ = Corner monument restored.

SEC COE 7, 12, 13, 18 TOTAL R 12-13E

1/4 rebar
25' ±
2nd LOW MEN (BROKEN)

22 3/4 REBAR

27.76
27.62

RR SPIKE SET

51.13'

90.92'

1/4 rebar

21.42'

21.19H
STOP SIGN

22.0 3/4 rebar

STOP SIGN

NOTE: THIS IS A COPY OF TOMI ABBOTT'S

FIELD NOTES FOR THIS CORNER. HE

OBVIOUSLY SET TIES BUT DIDNT

PREPARE A NEW CORNER FORM. I

BELIEVE THIS WORK WAS DONE IN THE

LATE 1990'S

Page E

1/4/06

