

4331211 1000

U.S. PUBLIC LAND SURVEY MONUMENT RECORD

(Prepared and as required by S. A-E 7.08 WI Administrative Code)

The SOUTH 1/16 corner of Section 11&12, T. 33 N., R. 12 E., Langlade County, WI
Corner was (check all that apply)

- Restored through acceptance of an obliterated evidence location.
- Restored through acceptance of a found perpetuated location.
- Determined to be lost and re-established through proportionate methods. (show bearings and distances to PLSS corners used for proportioning.)
- Restored/recovered/re-established in a location that differs from a previously established position. (Show difference in plan view below.)
- Check here if additional information is shown on the reverse side of this form.

Describe record evidence, recovered physical evidence, occupational evidence, testimonial evidence, and all other evidence considered in the recovery/restoration of the corner.

Corner not set as part of the original GLO survey.

1968 - R. Poss found iron pin near road c/l, previous location by highway department. Poss made two ties and filed a tie sheet.

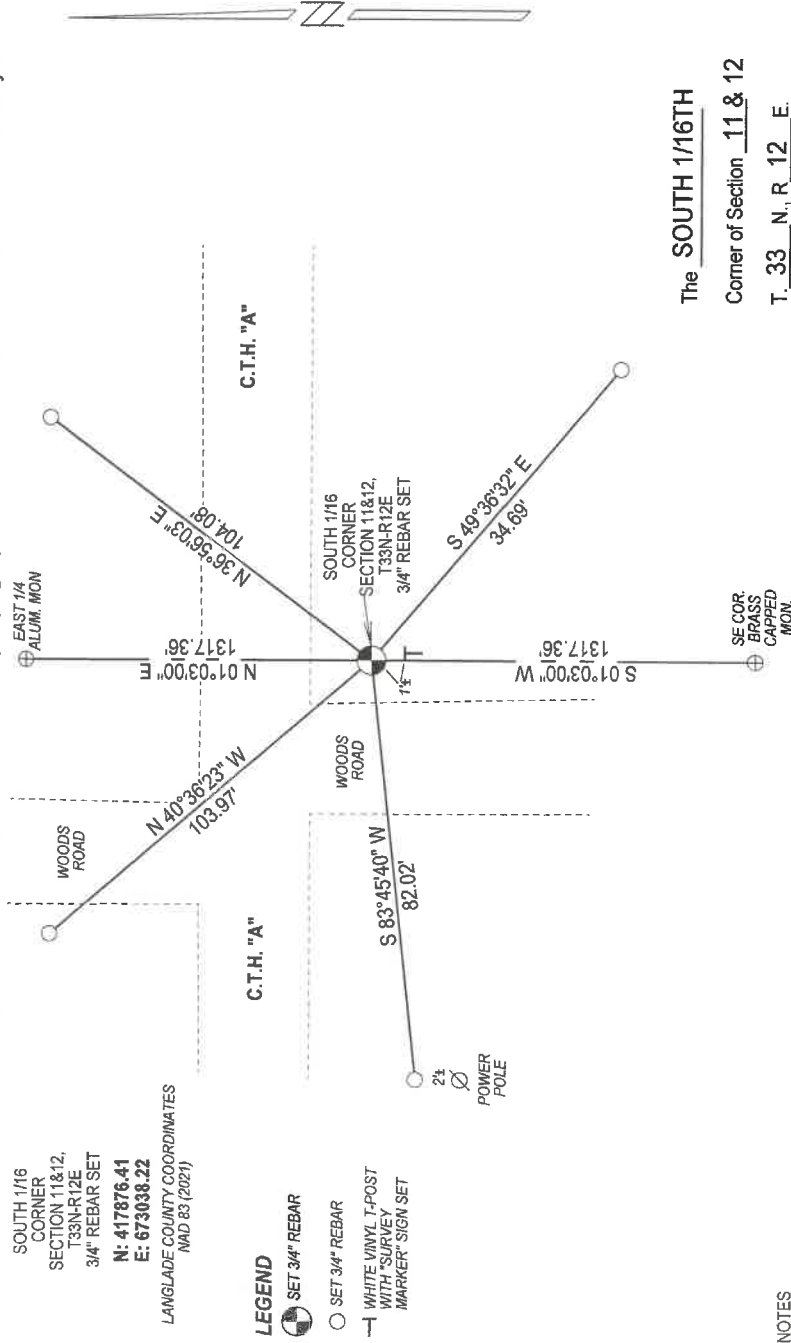
2005 - D. Tlusty notes "IP Brass Cap reported as knocked out by snowgroomer by Karl Illichmann."

2022 - I set a 3/4" x 24" rebar at midpoint between the East 1/4 Corner and Southeast Corner of Section 11.

Physical description of the monument set:

I set a 3/4" x 24" rebar at the corner location and tied it out as shown below.

Describe the accessories used to perpetuate the location of the corner. Include a plan view drawing and indicate accessories found/set. Describe measuring point on bearing trees. Show any topographic features that would aid in future recovery of the corner.



NOTES
 - SKETCH NOT DRAWN TO SCALE.
 - TIE BEARINGS SHOWN ARE LANGLADE COUNTY GRID BEARINGS.
 - ALL TIES MEASURED ELECTRONICALLY WITH TOTAL STATION.

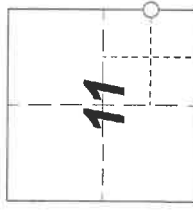
SURVEYORS SEAL



I, Michael J. Hoffman certify that the corner location shown on this record was determined by me or under my direction and control and that this U.S. Public Land Survey Monument Record is correct and complete to the best of my knowledge and belief.

Michael Hoffman 12/12/2022
 Signature Date

The SOUTH 1/16TH
 Corner of Section 11 & 12
 T. 33 N., R. 12 E.
 Langlade County, WI



○ = Location of corner

CERTIFIED LAND CORNER RESTORATION

33-12

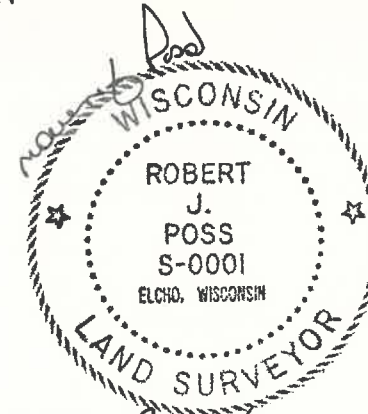
Index No. H-21

State of Wisconsin }
County of LANGLADE } ss.

I, ROBERT J. POSS, do hereby certify that on the 20TH day of JUNE, 1968, I found evidence of the SOUTH 1/2 corner of SECS. 11 & 12 Township 33, North, Range 12 EAST, Fourth, Principal Meridian, as described hereon; and that from this evidence I established a new monument and accessories as described hereon to perpetuate the original location of this corner.

Resident witnesses:

History of original corner establishment:

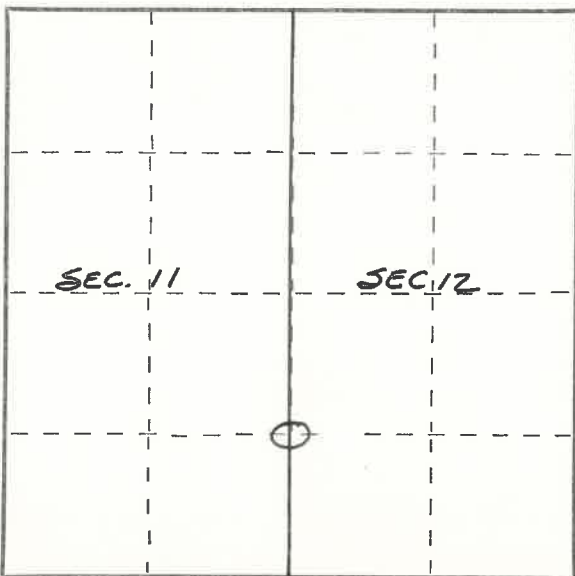
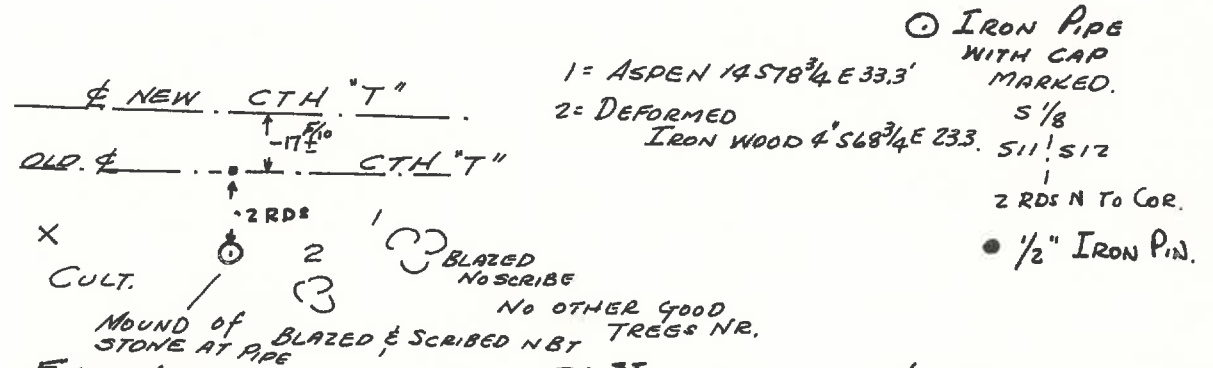


Description of corner evidence found:

FOUND IRON PIN - NEAR ROAD -
PREV. LOCATED BY HIGHWAY DEPT.

1" BRASS CAP
REMOVED AS "KNOCKED
OUT BY SNOW GRADER"
4/11/05 DEUSTY
CALLED IN BY NARR.
ELCHMANN

Description of monument and accessories I established to perpetuate the original location of this corner.



○ = Corner monument restored.

Dated at ELCHO, Wis., this 21ST day of JUNE, 1968.

Signature Robert J. Poss Title REG. LAND SURVEYOR Registration No. S-1
(County Surveyor, Registered Land Surveyor, or other duly authorized official)

Office of Register of Deeds, County of _____, I hereby certify that the within instrument was filed in this office for record on the _____ day of _____, 19____ at _____ o'clock _____ M.

(Register of Deeds)

By _____ Deputy

FORM 985 H. C. MILLER CO., MILWAUKEE