

U.S. PUBLIC LAND SURVEY MONUMENT RECORD

(Prepared and as required by S. A-E 7.08 WI Administrative Code)

The MC corner of Section 11/14, T. 33 N., R. 12 E., Langlade County, WI

Corner was: (check all that apply)

- Restored through acceptance of an obliterated evidence location.
- Restored through acceptance of a found perpetuated location.
- Determined to be lost and re-established through proportionate methods.
(Show bearings and distances to PLSS corners used for proportioning.)
- Restored/recovered/reestablished in a location that differs from a previously established position. (Show difference in plan view below.)

3312110022

Check here if additional information is shown on the reverse side of this form.

Describe record evidence, recovered physical evidence, occupational evidence, testimonial evidence and all other evidence considered in the recovery/restoration of the corner.

ORIGINAL - JAMES L. NOLIN - 1865 - SET WITNESS 1/4 CORNER @ 45.00 CHAINS WEST OF SE CORNER SECTION 11, BALANCE = 35.70 CHAINS TO SW CORNER, BT'S: BIRCH 12 NSOW 351ks., HEMLOCK 15 SSSW 371ks.

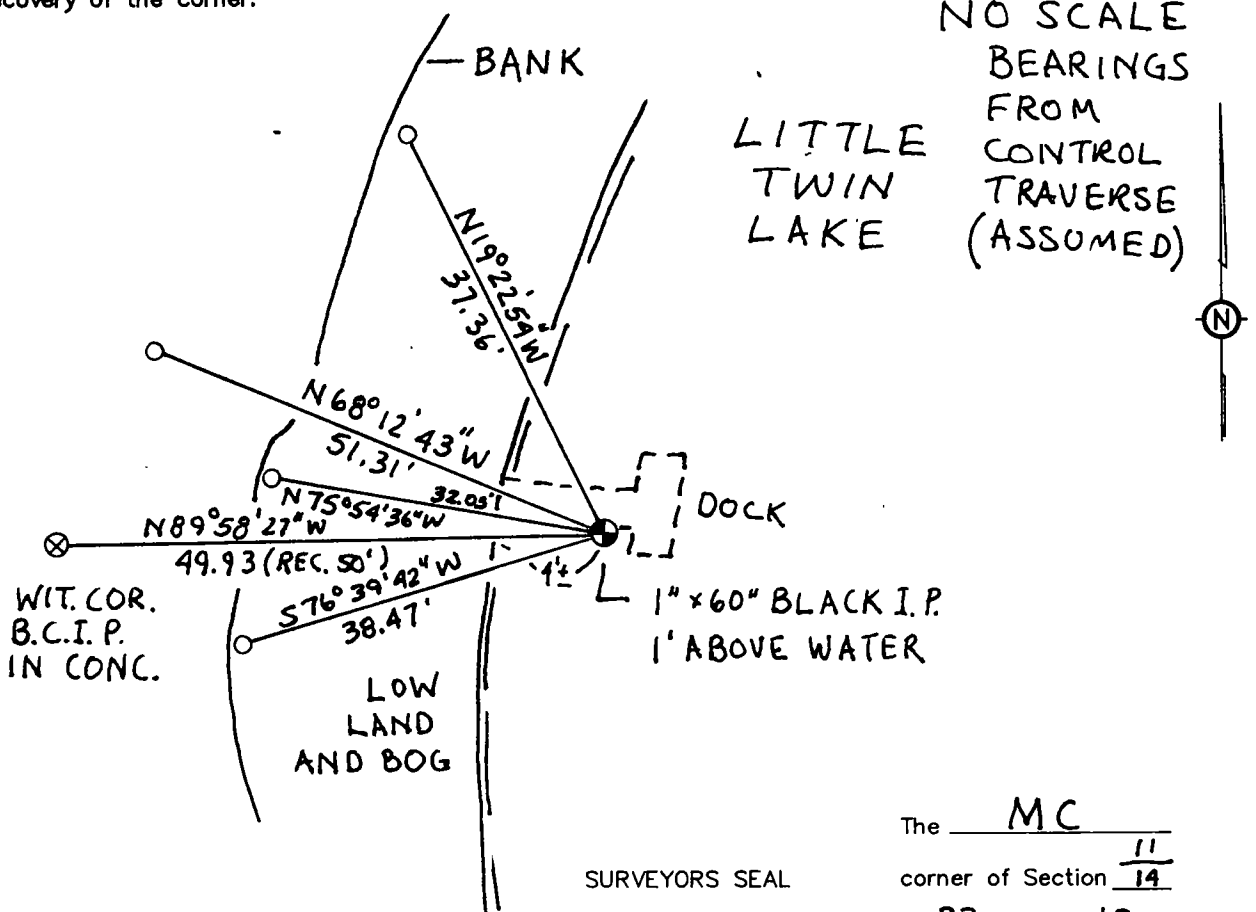
ROBERT J. POSS - 1968 - FOUND SQUARED STAKE IN MARSH-BOG, STAKE BURNED AT TOP AND ROTTED AWAY. SET B.C.I.P. IN CONC. 50' WEST AND 4 BT'S TO THIS WIT. COR.

DEAN A WILLIAMS 2001 - FOUND B.C.I.P. WIT. MON. IN CONC. SEARCHED 50' EAST IN LAKE, FOUND 1.0' DOWN VERTICAL ROTTED WOOD IN LAKE, ABOUT 4' INTO LAKE, ACCEPTED AS BEST EVIDENCE OF ORIG. LOCATION.

Physical description of the monument set:

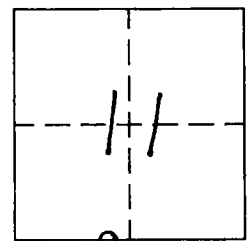
SET 1" x 60" BLACK IRON PIPE AND 4 NEW TIES: 3/4" x 30" REBARS.

Describe the accessories used to perpetuate the location of the corner. Include a plan view drawing and indicate accessories found/set. Describe measuring point on bearing trees. Show any topographic features that would aid in future recovery of the corner.



The MC corner of Section 11/14, T. 33 N., R. 12 E., Langlade County, WI

SURVEYORS SEAL



○ = Location of corner

I, DEAN A. WILLIAMS RLS-2468, certify that the corner location shown on this record was determined by me or under my direction and control and that this U.S. Public Land Survey Monument Record is correct and complete to the best of my knowledge and belief.

Dean Williams
Signature

4/10/2002
Date

INDEX NO.

J18-19

WISCONSIN ADMINISTRATIVE CODE

Note: A copy of the board-approved form is available from the Department of Regulation and Licensing, Bureau of Business and Design Professions, 1400 East Washington Avenue, P.O. Box 8935, Madison, Wisconsin 53708.

(3) MONUMENT RECORD REQUIREMENTS. A U.S. public land survey monument record shall show the location of the corner and shall include all of the following elements:

(a) The identity of the corner, as referenced to the U.S. public land survey system;

(b) A description of any record evidence, monument evidence, occupational evidence, testimonial evidence or any other material evidence considered by the surveyor, and whether the monument was found or placed;

(c) Reference ties to at least 4 witness monuments. Witness monuments shall be concrete, natural stone, iron, bearing trees or other equally durable material, except wood other than bearing trees;

(d) A plan view drawing depicting the relevant monuments and reference ties which is sufficient in detail to enable accurate relocation of the corner monument if the corner monument is disturbed;

(e) A description of any material discrepancy between the location of the corner as restored or reestablished and the location of that corner as previously restored or reestablished;

(f) Whether the corner was restored through acceptance of an obliterated evidence location or a found perpetuated location;

(g) Whether the corner was reestablished through lost-corner-proportionate methods;

(h) The directions and distances to other public land survey corners which were used as evidence or used for proportioning in determining the corner location; and,

(i) The stamp and signature or seal and signature of the land surveyor under whose direction and control the corner location was determined and a statement certifying that the U.S. public land survey monument record is correct and complete to the best of his or her knowledge and belief.

History: Cr. Register, February, 1987, No. 374, eff. 3-1-87, am. (1) and (3) (c), Register, May, 1989, No. 401, eff. 6-1-89.

A-E 7.07 Monuments. The type and position of monuments to be set on any survey shall be determined by the nature of the survey, the permanency required, the nature of the terrain, the cadastral features involved, and the availability of material.

History: Cr. Register, February, 1987, No. 374, eff. 3-1-87

A-E 7.08 U.S. public land survey monument record.

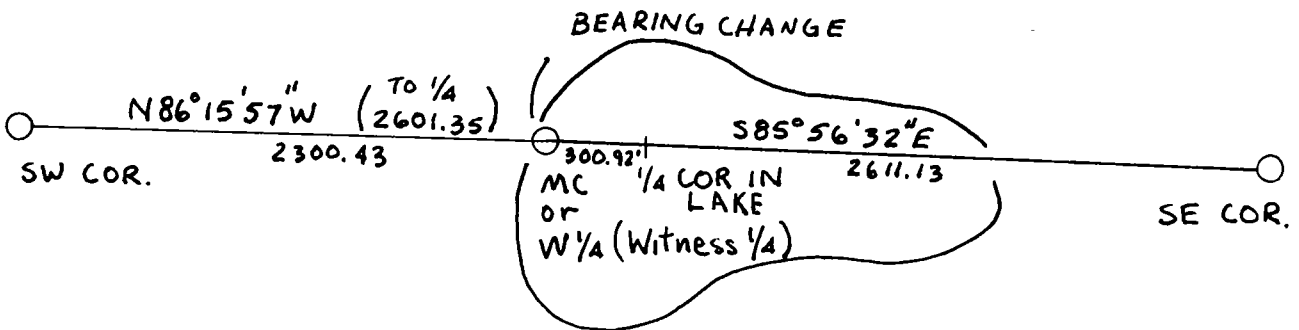
(1) WHEN MONUMENT RECORD REQUIRED. A U.S. public land survey monument shall be prepared and filed with the county surveyor's office as part of any land survey which includes or requires the perpetuation, restoration, reestablishment or use of a U.S. public land survey corner, and,

(a) There is no U.S. public land survey monument record for the corner on file in the office of the county surveyor or the register of deeds for the county in which the corner is located; or,

(b) The land surveyor who performs the survey accepts a location for the U.S. public land survey corner which differs from that shown on a U.S. public land survey monument record filed in the office of the county surveyor or register of deeds for the county in which the corner is located; or,

(c) The witness ties or U.S. public land survey monument referenced in an existing U.S. public land survey monument record have been destroyed or disturbed.

(2) FORM REQUIRED. A U.S. public land survey monument record shall be prepared on the board-approved form or on a form substantially the same as the board-approved form which includes all the elements required by this section. A form used for this purpose shall be entitled, "U.S. Public Land Survey Monument Record".



CERTIFIED LAND CORNER RESTORATION

33-12

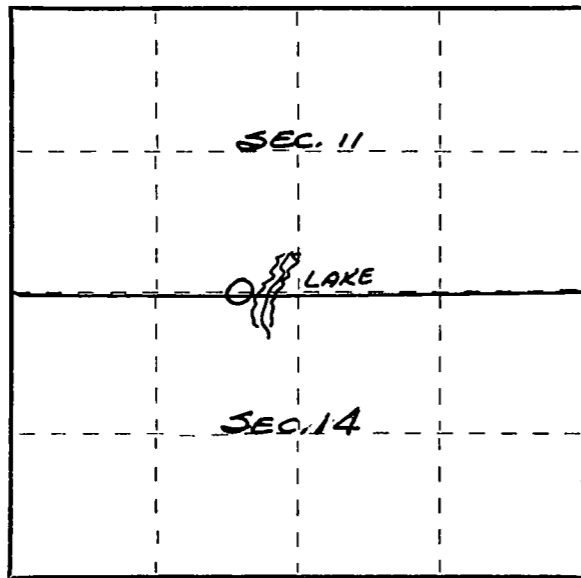
Index No. J-18-19

State of Wisconsin }
 County of LANGLADE } ss.

I, ROBERT J. POSS, do hereby certify that on the 20TH day of JUNE, 1968, I found evidence of the MEANDER corner of SECS 11 & 14 Township 33N, North, Range 12EAST, Fourth, Principal Meridian, as described hereon; and that from this evidence I established a new monument and accessories as described hereon to perpetuate the original location of this corner.

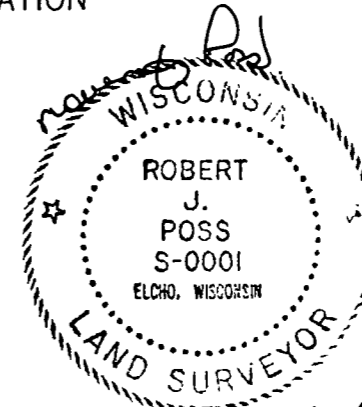
Resident witnesses:

FORM 985 H. G. MILLER CO., MILWAUKEE



○ = Corner monument restored.

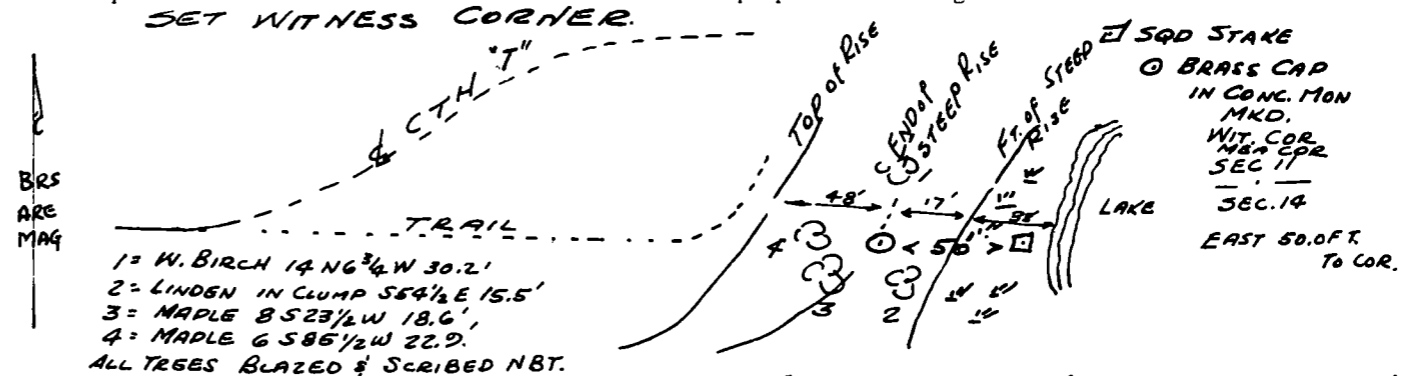
History of original corner establishment:



Description of corner evidence found:

FOUND SQUARED STAKE IN MARSH - BOG.
STAKE BURNED AT TOP & ROTTED AWAY.

Description of monument and accessories I established to perpetuate the original location of this corner.



Dated at ELCHO, Wis., this 21ST day of JUNE, 1968.

Signature Robert J. Poss Title REG. LAND SURVEYOR Registration No. S-1
 (County Surveyor, Registered Land Surveyor, or other duly authorized official)

Office of Register of Deeds, County of _____, I hereby certify that the within instrument was filed in this office for record on the _____ day of _____, 19____ at _____ o'clock _____ M.

 (Register of Deeds)

By _____ Deputy