

CERTIFIED LAND CORNER RESTORATION

Index No. H-13

State of Wisconsin }  
County of LANGLADE } ss.

I WILLIAM F. KELLY, do hereby certify that on the 3<sup>rd</sup> day of APRIL, 1979, I found evidence of the S 1/8 corner of SEC 9 Township 33, North, Range 12 E, Fourth Principal Meridian, as described hereon; and that from this evidence I established a new monument and accessories as described hereon to perpetuate the original location of this corner.

Resident witnesses:

N. Mischler

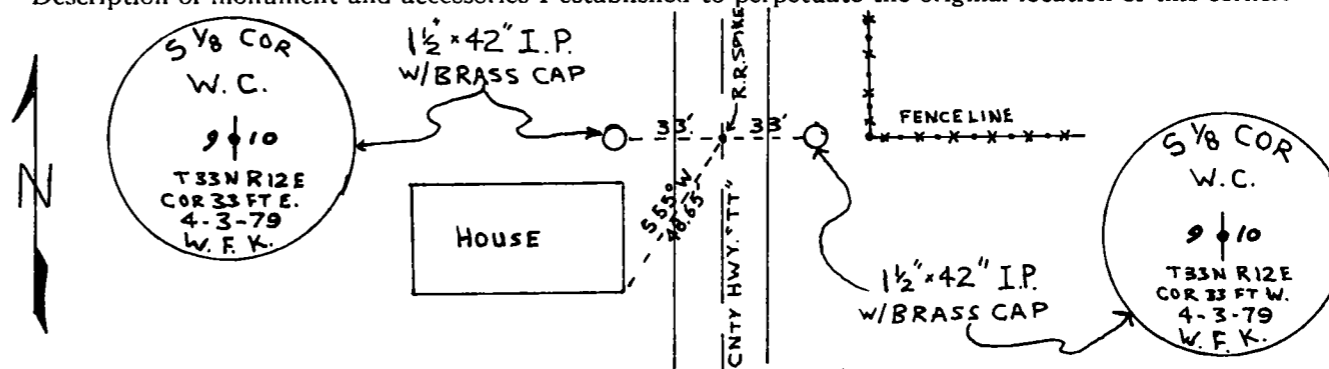
History of original corner establishment:

Description of corner evidence found:  
LOCATED IRON ROD IDENTIFIED AS 1/8 COR. BY RESIDENT WIT. SET R.R. BIKE IN PAVEMENT SET 1 1/2 x 42" I.P. WITH BRASS CAP AS WIT. MONUMENTS



*W. F. Kelly*

Description of monument and accessories I established to perpetuate the original location of this corner.



Dated at ELCHO, Wis., this 3<sup>rd</sup> day of APRIL, 1979.

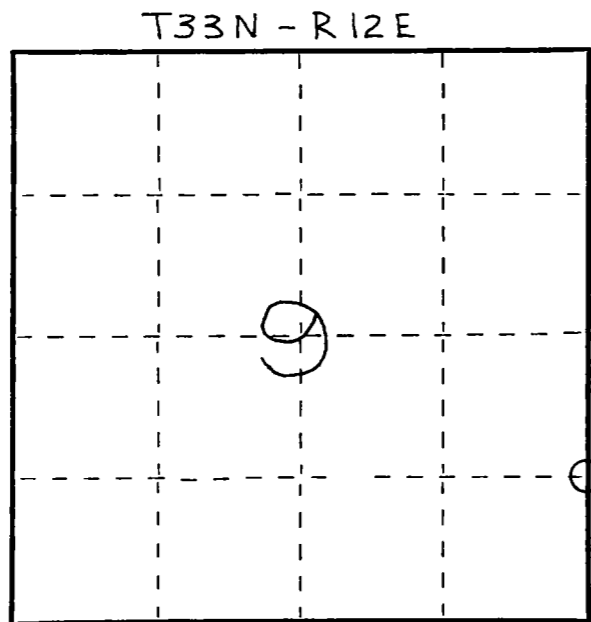
Signature William F. Kelly Title COUNTY SURVEYOR Registration No. S-1098  
(County Surveyor, Registered Land Surveyor, or other duly authorized official)

Office of Register of Deeds, County of \_\_\_\_\_, I hereby certify that the within instrument was filed in this office for record on the \_\_\_\_\_ day of \_\_\_\_\_, 19\_\_\_\_ at \_\_\_\_\_ o'clock \_\_\_\_\_ M.

(Register of Deeds)

By \_\_\_\_\_ Deputy

FORM 985 W. C. MILLER CO. - MILWAUKEE



○ = Corner monument restored.