

U. S. PUBLIC LAND SURVEY MONUMENT RECORD

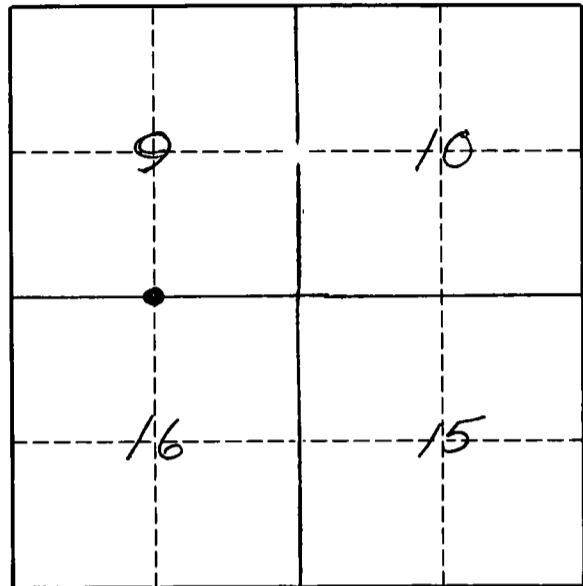
INSTRUCTIONS:

This record shall show the location of the corner and shall include all of the following nine elements (a through i).

- (a) Identify the corner by reference to the U.S. public land survey system.

● = Corner monument restored.

The South Quarter Corner of Section 9, Township 33 North, Range 12 East, Langlade County, Wisconsin.



T. 33 N., R. 12 E.

- (b) Describe any record evidence, monument evidence, occupational evidence, testimonial evidence or any other material evidence you considered, and whether the monument was found or placed.

The original corner was established in 1865 by James Nowlin. Original BT's were: Elm, 15", S28°W, 16 lks., and a Sugar, 14", N35°W, 31 lks. Surveyor E.S. Brooks found an original bearing tree standing and set a stone for the corner, 4" x 6" x 22" with an "x" on top and referenced a Sugar, 13", N21°E, 30 lks., and a Sugar, 8" S43°W, 32 lks. (21.12 ft.). On 4/1/94, I found Brooks' stone as described, and his SW maple BT. I accepted Brooks' stone as the location of the original quarter corner and perpetuated the location as shown below.

- (c) In the plan view drawing below, provide reference ties to at least 4 witness monuments, or, if the location is within a municipality, to at least 2 witness monuments. (Witness monuments shall be made of concrete, natural stone, iron or other equally durable material.)

Describe witness monuments.

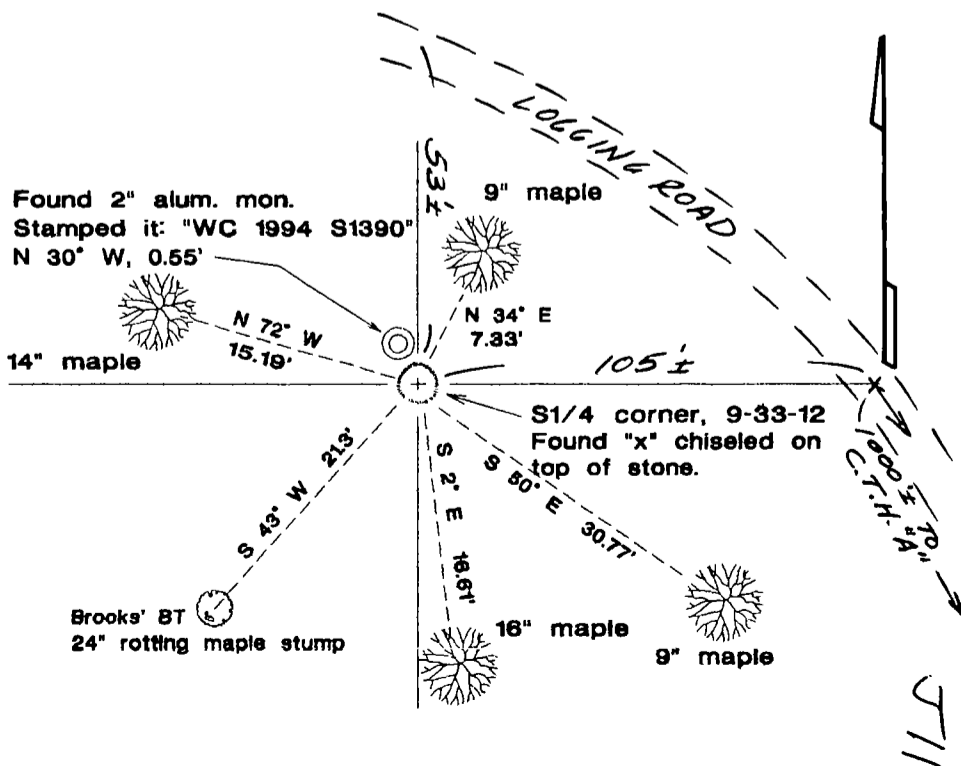
FB 4-45

- (d) Show a plan view drawing depicting the relevant monuments and reference ties which is sufficient in detail to enable accurate relocation of the corner monument if the corner monument is disturbed. Indicate north.

Found 4 existing BT's with "BT" scribed in low blaze & high turtle blaze facing corner. BT's measured to an aluminum nail set in low blaze on left side of tree. Nailed Bearing Tree sign on each tree. Painted all blue.

Bearings magnetic with hand compass.

Set vinyl sign post, N 30° W, 2.3'



511

Describe any material discrepancy between the location of the corner as restored or reestablished and the location of that corner as previously restored or reestablished by distance and direction. Show the discrepancy on the plan view drawing under (d), above. Show the distances between the corner as previously restored or reestablished and (1) the corner as restored or reestablished, and (2) to at least 2 of the witness monuments shown on the drawing in (d), above.

No discrepancy.

(f) Was the corner restored through acceptance of (1) an obliterated evidence location, or, (2) a found perpetuated location?
A found perpetuated location.

(g & h) Was the corner reestablished through lost corner proportionate methods? If so, show the method, including the directions and distances to other public land survey corners used as evidence or used for proportioning in determining the corner location.

No.

(i) I, DAVID E. TLUSTY
(type or print name)

certify that the corner location shown on this record was determined by me or under my direction and control and that this U.S. Public Land Survey Monument Record is correct and complete to the best of my knowledge and belief.



David E. Tlusty
Signature Date