

U. S. PUBLIC LAND SURVEY MONUMENT RECORD

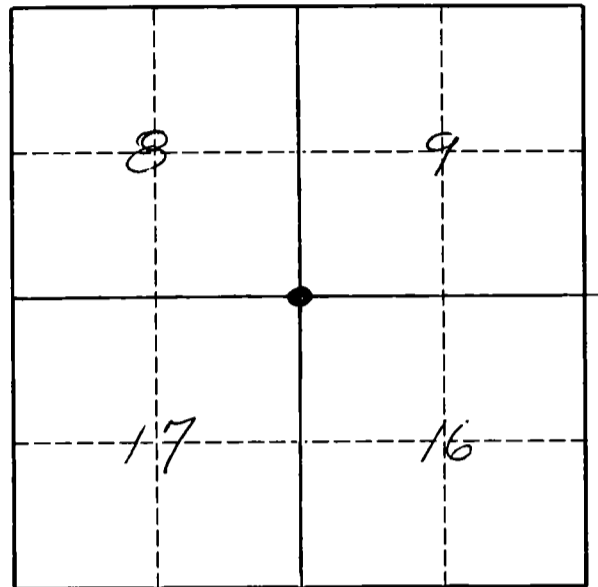
INSTRUCTIONS

This record shall show the location of the corner and shall include all of the following nine elements (a through i).

- (a) Identify the corner by reference to the U.S. public land survey system.

O = Corner monument restored.

The Southeast Corner of Section 8, Township 33 North, Range 12 East, Langlade County, Wisconsin.



T. 33 N., R. 12 E.

- (b) Describe any record evidence, monument evidence, occupational evidence, testimonial evidence or any other material evidence you considered, and whether the monument was found or placed.

The original corner was established in 1865 by James Nowlin. Original BT's were: Birch, 10", S75°E, 15 lks., and a Hemlock, 8", S35°W, 5 lks. Surveyor E.S. Brooks found evidence of the original bearing trees and set a stone, 18" x 28" x 30" with an "x" on top. In the 1930's re-survey of part of this township, the stone and Brooks' BT's were recovered. In the 1930's survey, a WC (4" iron pipe with brass cap) was set 2 lks south of the corner. Also marked was a grey stone, 3' x 3', N47°E, 18.3 lks (12.08'), and another grey stone, 4' x 4', S38°W, 49.1 lks. (32.4'). On 3/5/94, I found the corner stone, the NE witness stone and the 4" IP witness pipe as shown below. I find a 4' x 4' stone at correct distance, bearing approx. S68°W, but no "x". I accept the stone with chiseled "x" as original corner location.

- (c) In the plan view drawing below, provide reference ties to at least 4 witness monuments, or, if the location is within a municipality, to at least 2 witness monuments. (Witness monuments shall be made of concrete, natural stone, iron or other equally durable material.) Describe witness monuments.

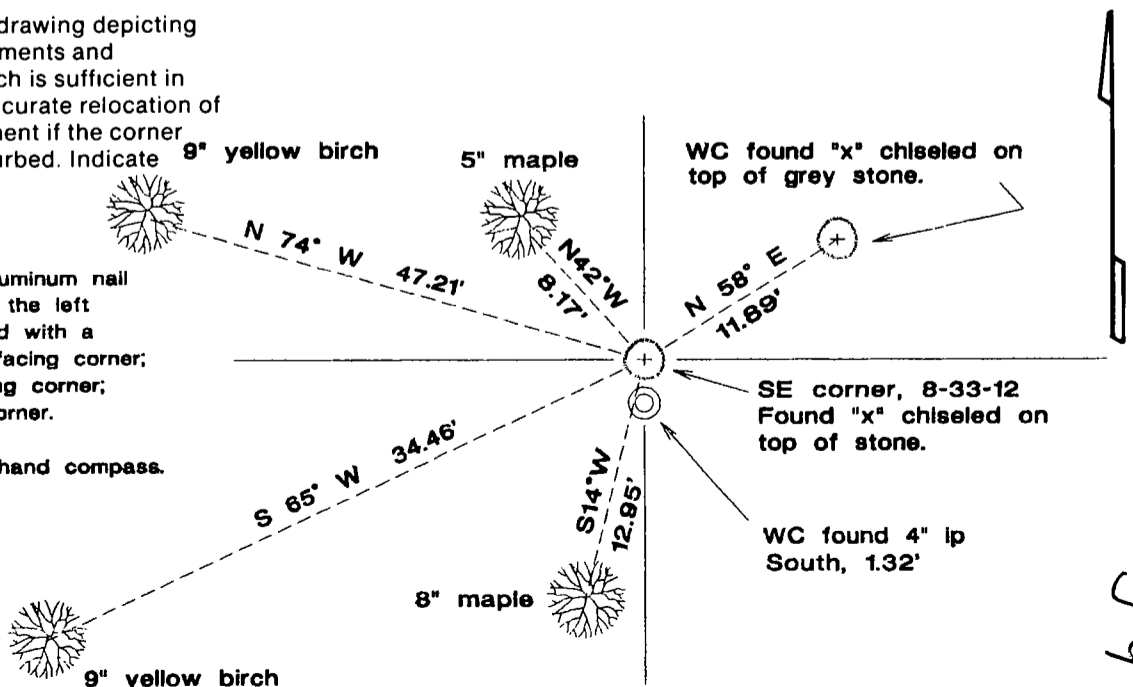
Bearing trees described below. All painted blue. Corner is approximately 150 feet north of an improved logging road bearing S60°E.

- (d) Show a plan view drawing depicting the relevant monuments and reference ties which is sufficient in detail to enable accurate relocation of the corner monument if the corner monument is disturbed. Indicate 9" yellow birch north.

BT's measured to an aluminum nail in a small low blaze on the left side of tree. BT's marked with a low scribed (BT) blaze facing corner; a high turtle blaze facing corner; and a BT sign facing corner.

Bearings magnetic with hand compass.

Set vinyl sign post, 2.5' North of corner.



679

