

CERTIFIED LAND CORNER RESTORATION

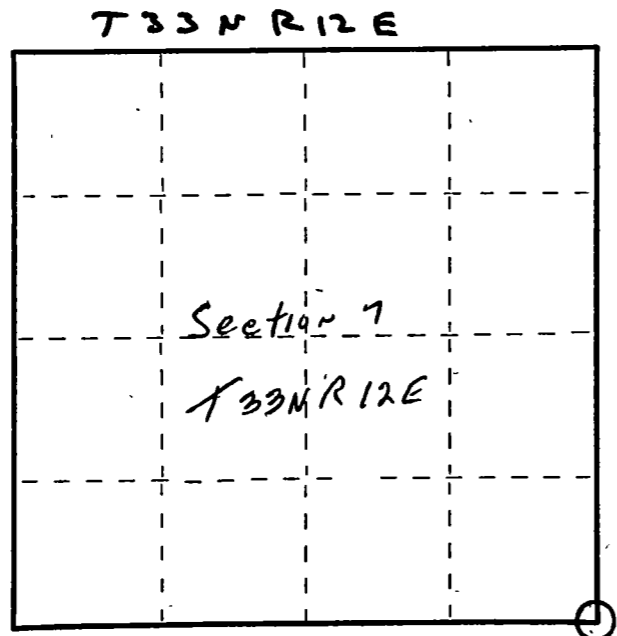
Index No. J-5

State of Wisconsin }  
County of Langlade } ss.

I Raymond J. Hallisy, do hereby certify that on the 11th day of October, 1980, I found evidence of the Section corner of 7, 8, 17, & 18 Township 33 12E, North, Range 12E, Fourth Principal Meridian, as described hereon; and that from this evidence I established a new monument and accessories as described hereon to perpetuate the original location of this corner.

Resident witnesses:

.....  
.....  
.....



○ = Corner monument restored.

History of original corner establishment:

Corner reset in the 1930 resurvey.

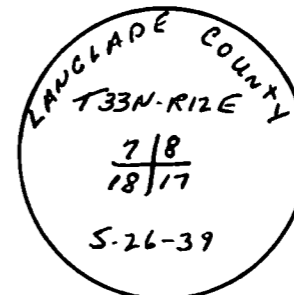
Description of corner evidence found:

A 4" pipe with brass cap, rock mound, and a rock with X S75W 16' 1"

Description of monument and accessories I established to perpetuate the original location of this corner.

New BT's

- 6" Hard Maple S86E 12' 11"
- 10" Hard Maple S54W 21' 6"
- 6" Hard Maple N10W 23' 2"



Dated at Antigo, Wis., this 11th day of October, 1980.

Signature Raymond J. Hallisy Title Reg. Surveyor Registration No. S-685  
(County Surveyor, Registered Land Surveyor, or other duly authorized official)

Office of Register of Deeds, County of....., I hereby certify that the within instrument was filed in this office for record on the..... day of....., 19..... at..... o'clock..... M.

.....  
(Register of Deeds)

By..... Deputy

FORM 985 H C MILLER CO. MILWAUKEE