

CERTIFIED LAND CORNER RESTORATION

Index No. C-5

State of Wisconsin }
County of LANGLADE } ss.

I WILLIAM F. KELLEY do hereby certify that on the 14th day of FEBRUARY, 1979, I found evidence of the W 1/4 corner of SEC 5 Township 33, North, Range 12 E, Fourth Principal Meridian, as described hereon; and that from this evidence I established a new monument and accessories as described hereon to perpetuate the original location of this corner.

Resident witnesses:

.....
.....
.....

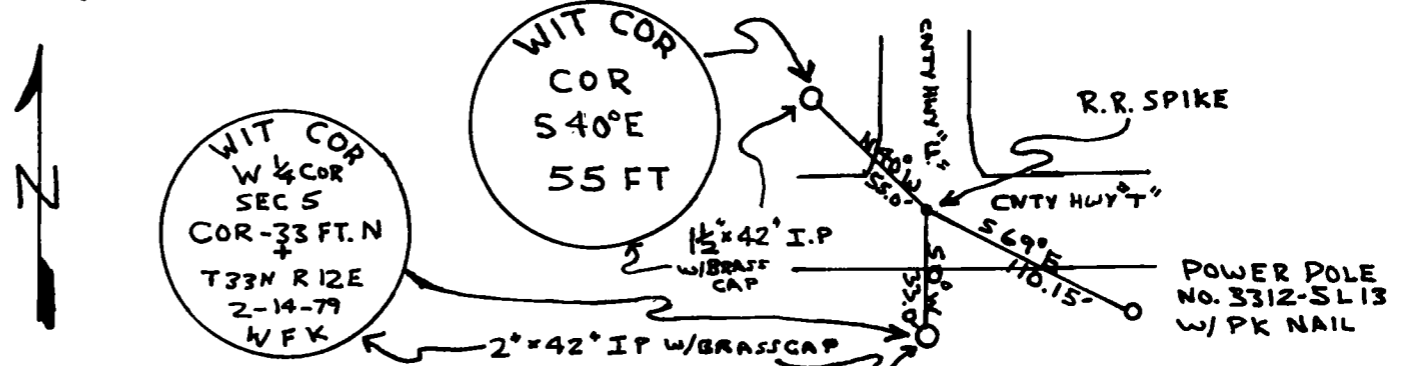
History of original corner establishment:

Description of corner evidence found:

FOUND R.R. SPIKE AT INTERSECTION OF CNTY. HWY. "U" AND CNTY. HWY "T" SPIKE SET OVER IRON ROD SET BY M. HUTCHINSON

WITNESSED R.R. SPIKE W/2"x42" I.P. W/BRASSCAP S 00° W 33.0' AND A 1 1/2"x42" I.P. W/BRASSCAP N 40° W 55.0'. REFERENCED R.R. SPIKE TO POWER POLE NO. 3312-SL13 S 69° E 110.15'

Description of monument and accessories I established to perpetuate the original location of this corner.



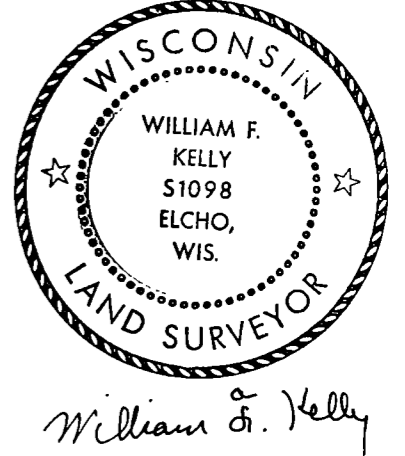
Dated at ELCHO, Wis., this 14th day of FEBRUARY, 1979.

Signature William F. Kelly Title COUNTY SURVEYOR Registration No. S-1098
(County Surveyor, Registered Land Surveyor, or other duly authorized official)

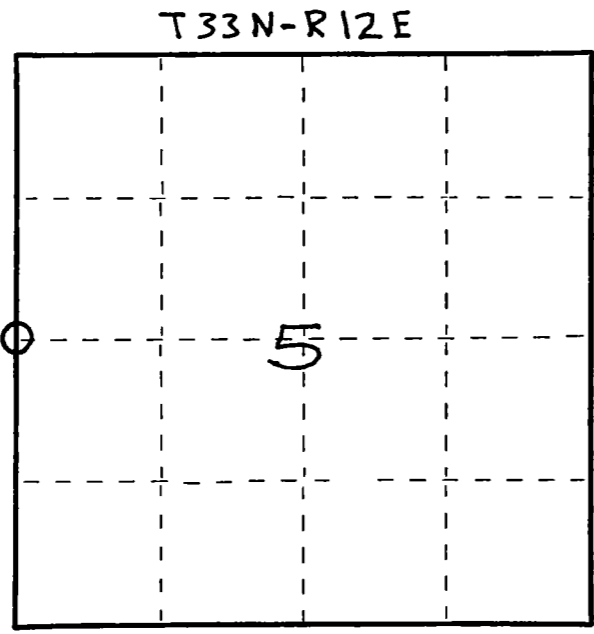
Office of Register of Deeds, County of _____, I hereby certify that the within instrument was filed in this office for record on the _____ day of _____, 19____ at _____ o'clock _____ M.

.....
(Register of Deeds)

By _____ Deputy



FORM 985 R. C. MILLER CO., MILWAUKEE



○ = Corner monument restored.