

43312060020

U.S. PUBLIC LAND SURVEY MONUMENT RECORD

(Prepared and as required by S. A-E 7.08 WI Administrative Code)

The South 1/4 corner of Section 6, T. 33 N., R. 12 E., Langlade County, WI
Corner was (check all that apply)

- Restored through acceptance of an obliterated evidence location.
- Restored through acceptance of a found perpetuated location.
- Determined to be lost and re-established through proportionate methods.
(show bearings and distances to PLSS corners used for proportioning.)
- Restored/recovered/re-established in a location that differs from a previously established position. (Show difference in plan view below.)
- Check here if additional information is shown on the reverse side of this form.

Describe record evidence, recovered physical evidence, occupational evidence, testimonial evidence and all other evidence considered in the recovery/restoration of the corner.

May 1865 - J. L. Nowlin originally set corner. BTs: Hemlock 20", N60E, 10 links; Hemlock 8", S40W, 25 links

May 1918 - Hutchinson (FB94, P170) - "1/4 post between 6-7 - stake set by Edick. No original marks, rerun his line, and found his corner OK." BTs: Pine Stump, 30", S24 1/2E, 33 1/2 links, Hemlock, 14", S31 3/4W, 10 links.

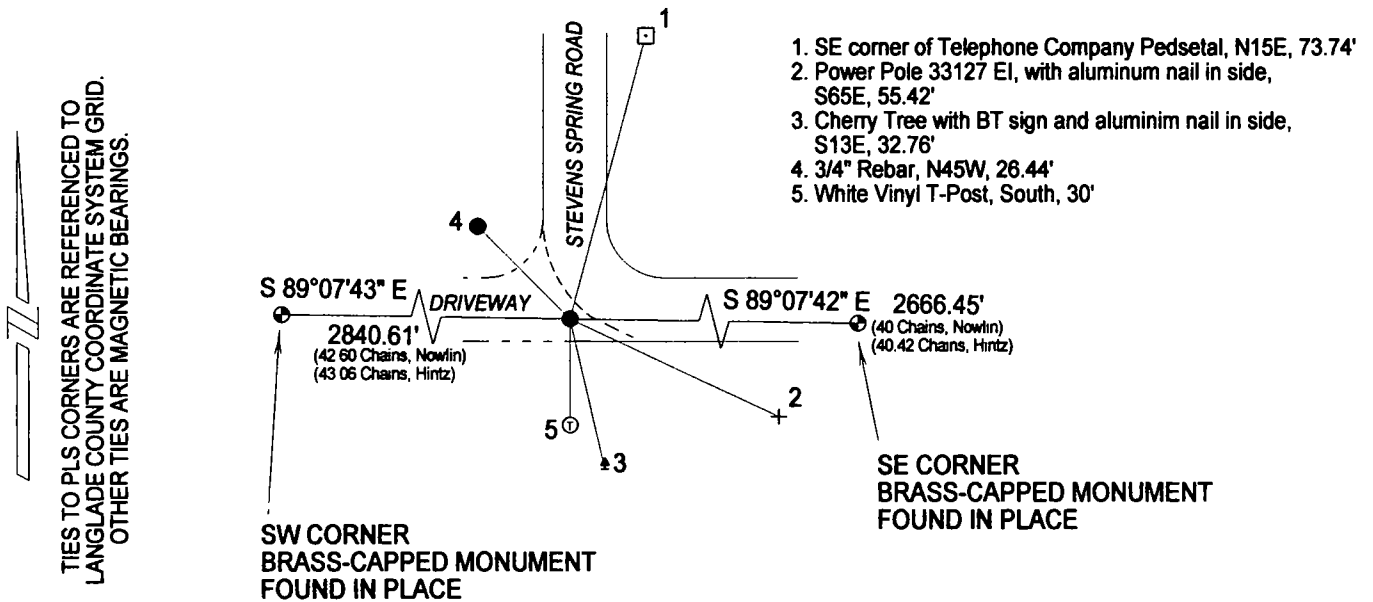
1940 - Resurvey by D.A. Hintz and C.W. Borth. "40.42 chains to 1/4 corner (from SE). Did not find this corner but it had been set on prop. by Co Surveyor at one time. Found the old BT stump, but it had been moved. Town road East and North. Set 1/4 corner and marked new pine stump 20", S24W, 98 links."

May 2006 - I reset corner in proportion to original measurements. Corner falls at PI of centerline Stevens Springs Road.

Physical description of the monument set:

3/4 inch Rebar set for corner, with ties as detailed below.

Describe the accessories used to perpetuate the location of the corner. Include a plan view drawing and indicate accessories found/set. Describe measuring point on bearing trees. Show any topographic features that would aid in future recovery of the corner.



The S 1/4

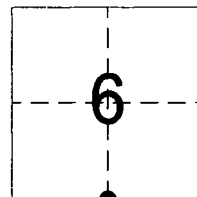
SURVEYORS SEAL

Corner of Section 6

T. 33 N., R. 12 E.
Langlade County, WI

I, Timothy J. Rusch, certify that the corner location shown on this record was determined by me or under my direction and control and that this U.S. Public Land Survey Monument Record is correct and complete to the best of my knowledge and belief.

Timothy J. Rusch 8-8-2006
Signature Date



● = Location of corner

INDEX NO. E3 33-12