

CERTIFIED LAND CORNER RESTORATION

Index No. E-5

State of Wisconsin }
County of Lafayette } ss.

I Raymond J. Hallist, do hereby certify that on the 6th day of November, 1982, I found evidence of the section corner of Section 5, 6, 7, & 8 Township 33, North, Range 12E, Fourth Principal Meridian, as described hereon; and that from this evidence I established a new monument and accessories as described hereon to perpetuate the original location of this corner.

Resident witnesses:

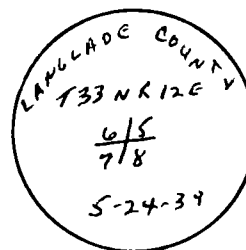
.....
.....
.....

History of original corner establishment:

Corner set in the 1930 resurvey.

Description of corner evidence found:

4" pipe with brass cap, old fence South and West.

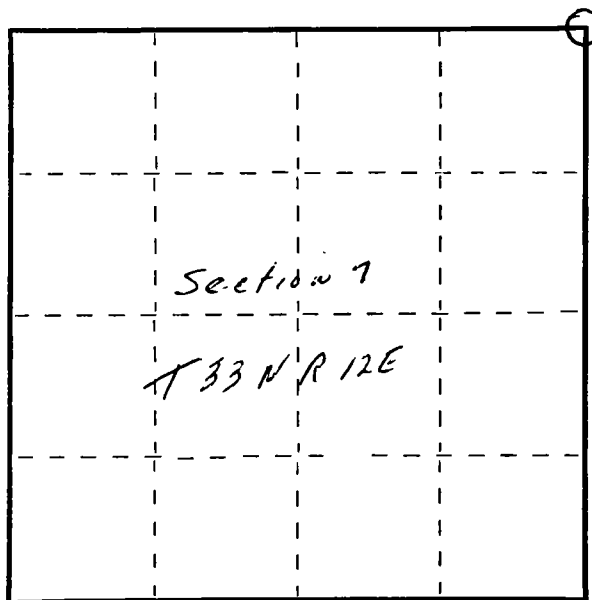


Description of monument and accessories I established to perpetuate the original location of this corner.

New BT's

4"	White birch	N77W	22'
12"	Red Maple	S67W	60.2'
8"	Red Maple	S22W	65.2'
6"	Aspen	N52W	16.2'

FORM 985 M. C. MILLER CO., MILWAUKEE



○ = Corner monument restored.

Dated at Antigo, Wis., this 6th day of November, 1982.

Signature Raymond J. Hallist Title Land Surveyor Registration No. S-685
(County Surveyor, Registered Land Surveyor, or other duly authorized official)

Office of Register of Deeds, County of....., I hereby certify that the within instrument was filed in this office for record on the.....day of....., 19..... at.....o'clock..... M.

.....
(Register of Deeds)

By.....Deputy

CERTIFIED LAND CORNER RESTORATION

Index No. E-5
33-12

State of Wisconsin }
County of Langlade } ss.

History of original corner establishment:

Brass Cap set 5-24-39

I Gary A. Radtke, do hereby certify that on the 15th day of December, 19 76, I found evidence of the NE Corner of Section 7 corner of _____ Township 33, North, Range 12 East, Fourth Principal Meridian, as described hereon; and that from this evidence I established a new monument and accessories as described hereon to perpetuate the original location of this corner.

Description of corner evidence found:

Line fences converging on Brass Cap set in 1939



Gary A. Radtke

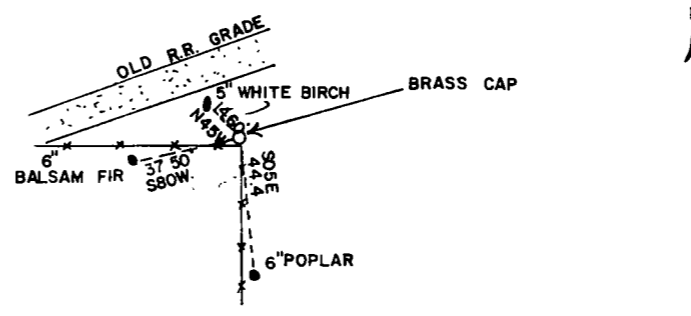
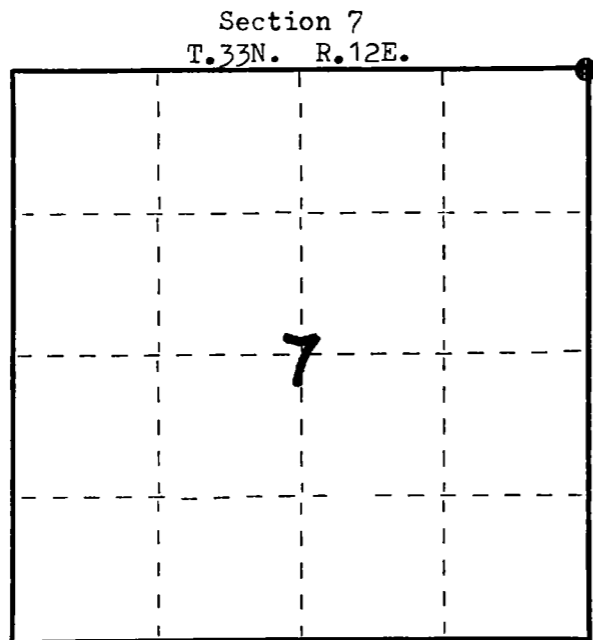
Resident witnesses:

Fred Krueger

Description of monument and accessories I established to perpetuate the original location of this corner.

Brass Cap set in cement monument.

FORM 985 H. C. MILLER CO., MILWAUKEE



Dated at ANTIGO, Wis., this 15th day of December, 19 76.

Signature Gary A. Radtke Title Registered Land Surveyor Registration No. 1248
(County Surveyor, Registered Land Surveyor, or other duly authorized official)

Office of Register of Deeds, County of _____, I hereby certify that the within instrument was filed in this office for record on the _____ day of _____, 19 _____ at _____ o'clock _____ M.

(Register of Deeds)

By _____ Deputy

○ = Corner monument restored.