

CERTIFIED LAND CORNER RESTORATION

Index No. C-7

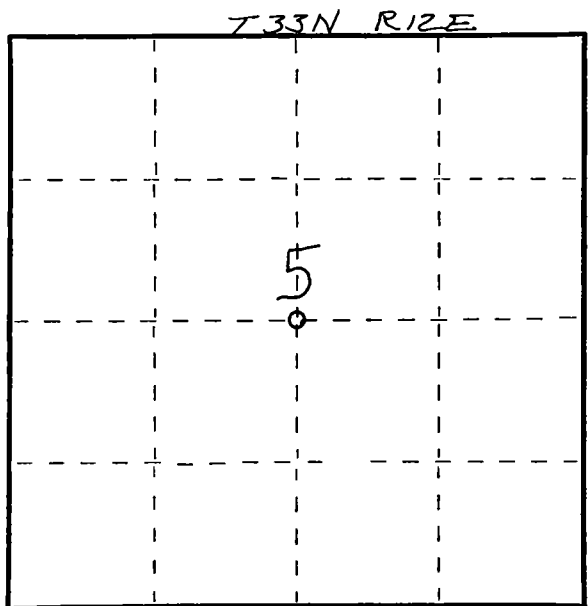
State of Wisconsin }
County of LANGLADE } ss.

I WILLIAM F. KELLY, do hereby certify that on the 16TH day of FEBRUARY, 19 79, I found evidence of the CENTER 1/4 corner of SECTION 5 Township 33, North, Range 12E, Fourth Principal Meridian, as described hereon; and that from this evidence I established a new monument and accessories as described hereon to perpetuate the original location of this corner.

Resident witnesses:

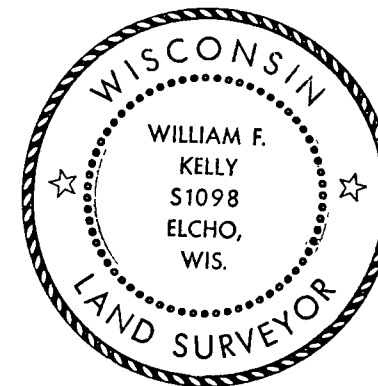
.....
.....
.....

FORM 985 R. C. MILLER CO., MILWAUKEE



○ = Corner monument restored.

History of original corner establishment:

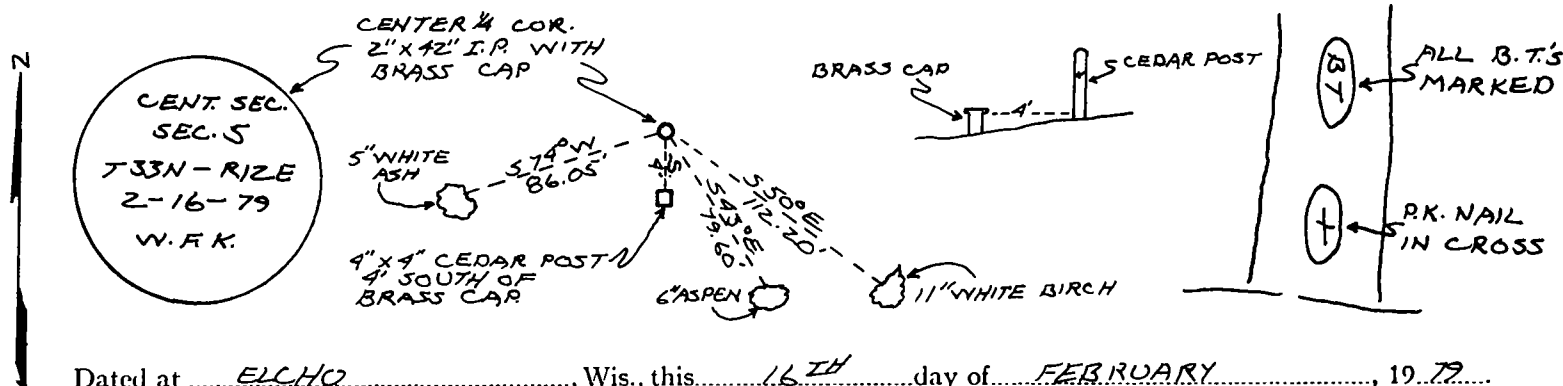


William F. Kelly

Description of corner evidence found:

CENTER 1/4 COR. SET BY SPLITTING THE DISTANCE BETWEEN THE WEST 1/4 COR. & THE EAST 1/4 COR.

Description of monument and accessories I established to perpetuate the original location of this corner.



Dated at ELCHO, Wis., this 16TH day of FEBRUARY, 19 79.

Signature William F. Kelly Title COUNTY SURVEYOR Registration No. S-7098
(County Surveyor, Registered Land Surveyor, or other duly authorized official)

Office of Register of Deeds, County of, I hereby certify that the within instrument was filed in this office for record on the day of, 19..... at o'clock M.

.....
(Register of Deeds)

By Deputy

U. S. PUBLIC LAND SURVEY MONUMENT RECORD

INSTRUCTIONS:

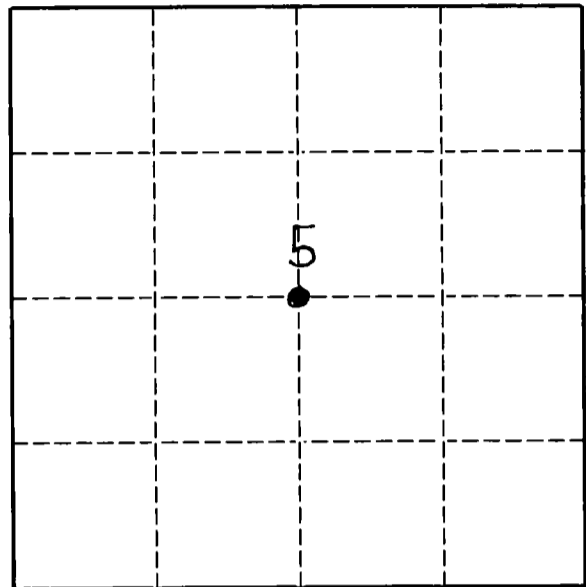
This record shall show the location of the corner and shall include all of the following nine elements (a through i).

- (a) Identify the corner by reference to the U.S. public land survey system.
- O = Corner monument restored.

ORIGINAL CORNER ESTABLISHED BY JAMES NOWLIN IN MAY 1865

T. ARNOTT RESET CORNER IN 1970'S
CORNER USED TO TIE IN "WOLF RIVER HEIGHTS" SUB DIV. BY W. KALLY

M. SEYMOUR (1990) EST. CENTER OF SECT BY INTERSECTING 1/4 LINES



T 33 N R 12 E

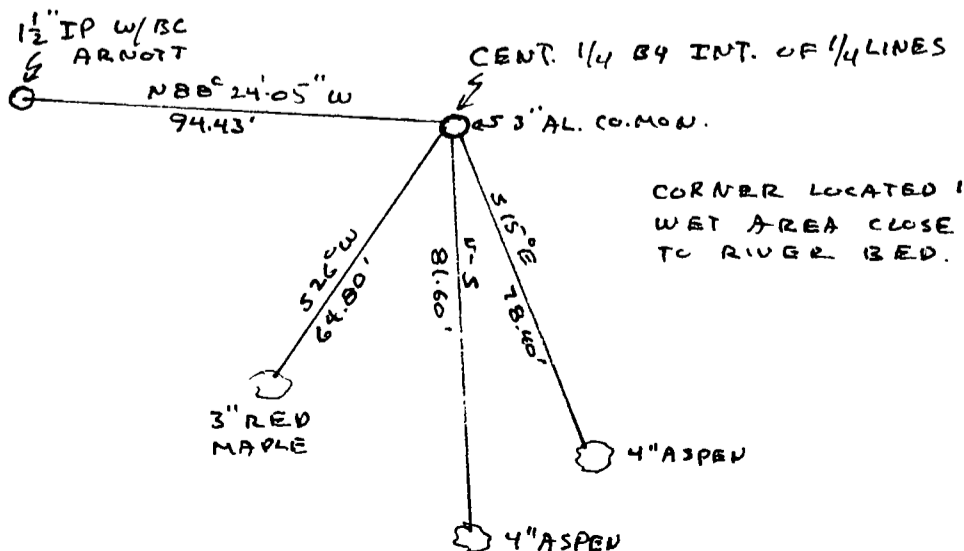
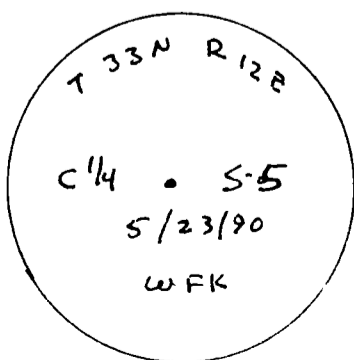
- (b) Describe any record evidence, monument evidence, occupational evidence, testimonial evidence or any other material evidence you considered, and whether the monument was found or placed.

M. SEYMOUR EST. CENTER 1/4 CORNER, MARKED WITNESS TREES, TIED TO ARNOTT'S CORNER. COUNTY MONUMENT SET

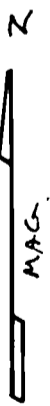
- (c) In the plan view drawing below, provide reference ties to at least 4 witness monuments, or, if the location is within a municipality, to at least 2 witness monuments. (Witness monuments shall be made of concrete, natural stone, iron or other equally durable material.) Describe witness monuments.



- (d) Show a plan view drawing depicting the relevant monuments and reference ties which is sufficient in detail to enable accurate relocation of the corner monument if the corner monument is disturbed. Indicate north.



CORNER LOCATED IN WET AREA CLOSE TO RIVER BED.



Describe any material discrepancy between the location of the corner as restored or reestablished and the location of that corner as previously restored or reestablished by distance and direction. Show the discrepancy on the plan view drawing under (d), above. Show the distances between the corner as previously restored or reestablished and (1) the corner as restored or reestablished, and (2) to at least 2 of the witness monuments shown on the drawing in (d), above.

SEE SKETCH

(f) Was the corner restored through acceptance of (1) an obliterated evidence location, or, (2) a found perpetuated location?

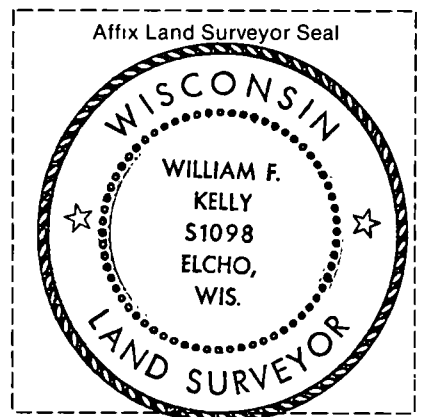
EST. BY INTERSECTION OF E-W AND N-S 1/4 LINES

(g & h) Was the corner reestablished through lost corner proportionate methods? If so, show the method, including the directions and distances to other public land survey corners used as evidence or used for proportioning in determining the corner location.

SEE ATTACHED SKETCH

(i) I, WILLIAM F. KELLY RLS 1098
(type or print name)

certify that the corner location shown on this record was determined by me or under my direction and control and that this U.S. Public Land Survey Monument Record is correct and complete to the best of my knowledge and belief.



William F. Kelly 5-30-90
Signature Date