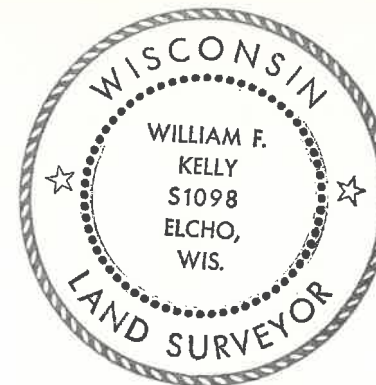


CERTIFIED LAND CORNER RESTORATION

Index No. C7-C8  
MEANDER CORNER

State of Wisconsin }  
County of LANGLADE } ss.

History of original corner establishment:



I WILLIAM F. KELLY, do hereby certify that on the 16TH day of MARCH, 1979, I found evidence of the MEANDER corner of THE E-W 1/4 LINE, SEC. 5 Township 33, North, Range 12E, Fourth Principal Meridian, as described hereon; and that from this evidence I established a new monument and accessories as described hereon to perpetuate the original location of this corner.

Description of corner evidence found:

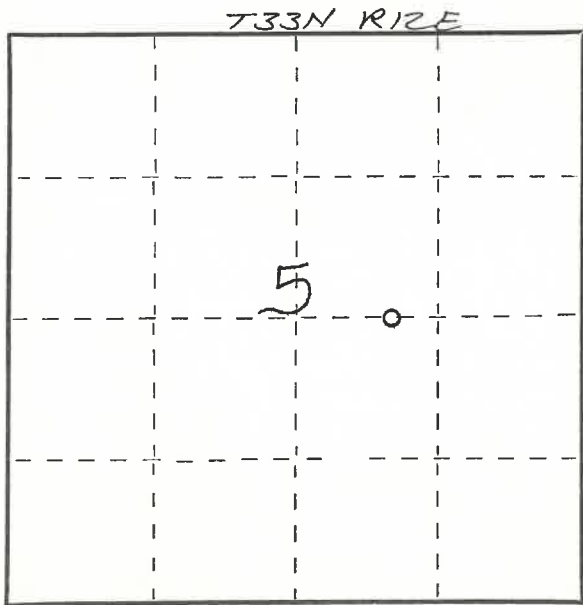
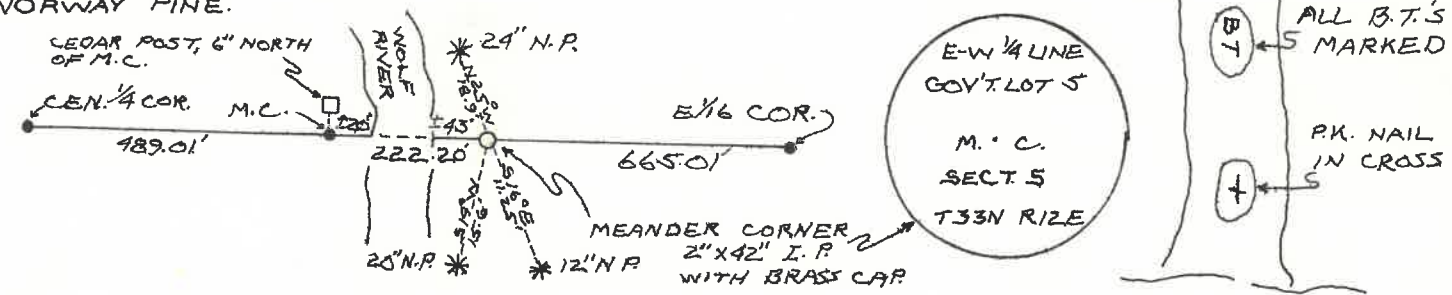
*William F. Kelly*  
SET MEANDER CORNER FROM CONTROL SURVEY OF WOLF RIVER HEIGHTS SUBDIVISION

Resident witnesses:

.....  
.....  
.....

Description of monument and accessories I established to perpetuate the original location of this corner.

NOTE:  
ALL B.T.'S ARE  
NORWAY PINE.



Dated at ELCHO, Wis., this 16 day of MARCH, 1979.

Signature William F. Kelly Title COUNTY SURVEYOR Registration No. 51098  
(County Surveyor, Registered Land Surveyor, or other duly authorized official)

Office of Register of Deeds, County of \_\_\_\_\_, I hereby certify that the within instrument was filed in this office for record on the \_\_\_\_\_ day of \_\_\_\_\_, 19\_\_\_\_ at \_\_\_\_\_ o'clock \_\_\_\_\_ M.

(Register of Deeds)

By \_\_\_\_\_ Deputy

○ = Corner monument restored.

FORM 985 M. C. MILLER CO., MILWAUKEE