

CERTIFIED LAND CORNER RESTORATION

Index No. D-7

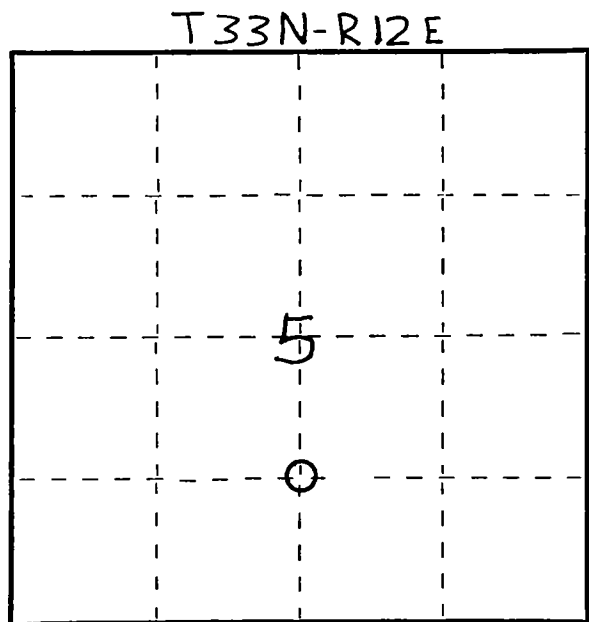
State of Wisconsin }  
County of LANGLADE } ss.

I WILLIAM F. KELLY, do hereby certify that on the 15<sup>th</sup> day of FEBRUARY, 19 79, I found evidence of the S 1/8 corner of SEC. 5 Township 33, North, Range 12 E, Fourth Principal Meridian, as described hereon; and that from this evidence I established a new monument and accessories as described hereon to perpetuate the original location of this corner.

Resident witnesses:

.....  
.....  
.....

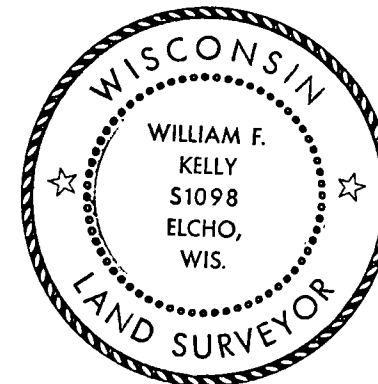
FORM 985 H. C. MILLER CO., MILWAUKEE



○ = Corner monument restored.

History of original corner establishment:

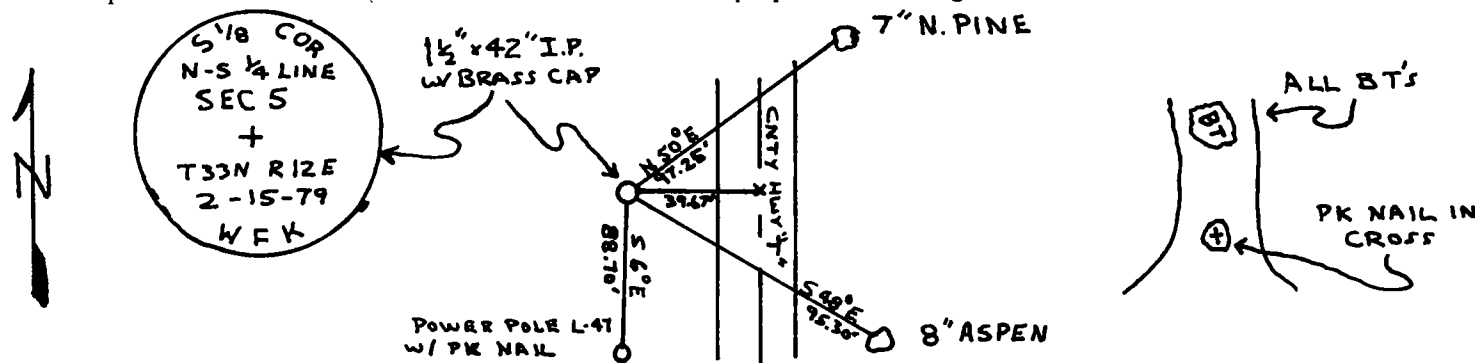
Description of corner evidence found:



*William F. Kelly*

SET S 1/8 COR ON N-S 1/4 LINE BY PROPORTIONAL MEASUREMENT BETWEEN CENTER 1/4 COR AND S 1/4 COR. PLACED 1 1/2" x 42" I.P. W/ BRASS CAP AND REFERENCED, W/ 2 BT'S AND POWER POLE AND E OF ROAD

Description of monument and accessories I established to perpetuate the original location of this corner.



Dated at ELCHO, Wis., this 15<sup>th</sup> day of FEBRUARY, 19 79.

Signature William F. Kelly Title COUNTY SURVEYOR Registration No. S-1098  
(County Surveyor, Registered Land Surveyor, or other duly authorized official)

Office of Register of Deeds, County of ....., I hereby certify that the within instrument was filed in this office for record on the ..... day of ....., 19 ..... at ..... o'clock ..... M.

(Register of Deeds)

By ..... Deputy