

CERTIFIED LAND CORNER RESTORATION

Index No. E-7

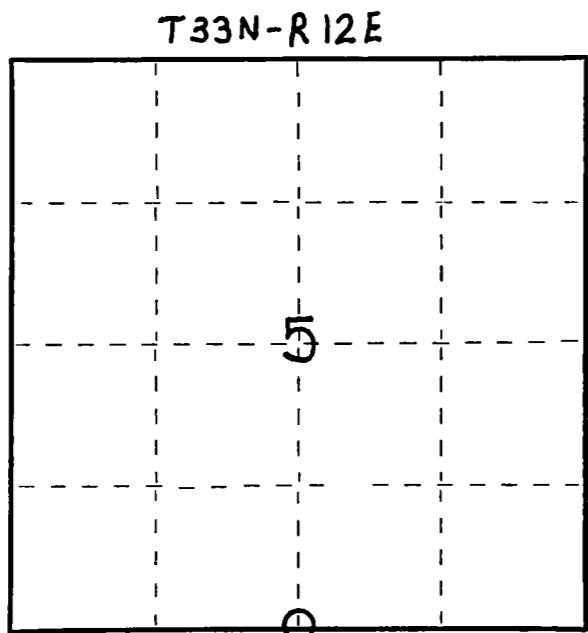
State of Wisconsin }
 County of LANGLADE } ss.

I WILLIAM F. KELLY, do hereby certify that on the 15th day of MARCH, 1979, I found evidence of the SOUTH 1/4 corner of SECT. 5 Township 33, North, Range 12 EAST, Fourth Principal Meridian, as described hereon; and that from this evidence I established a new monument and accessories as described hereon to perpetuate the original location of this corner.

Resident witnesses:

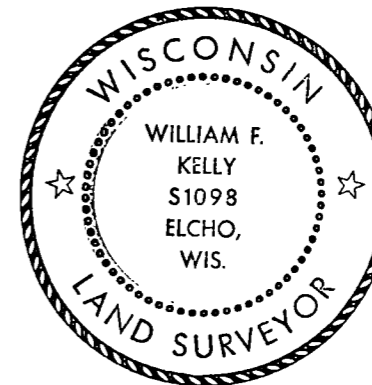
.....

FORM 985 H. C. MILLER CO., MILWAUKEE



○ = Corner monument restored.

History of original corner establishment:

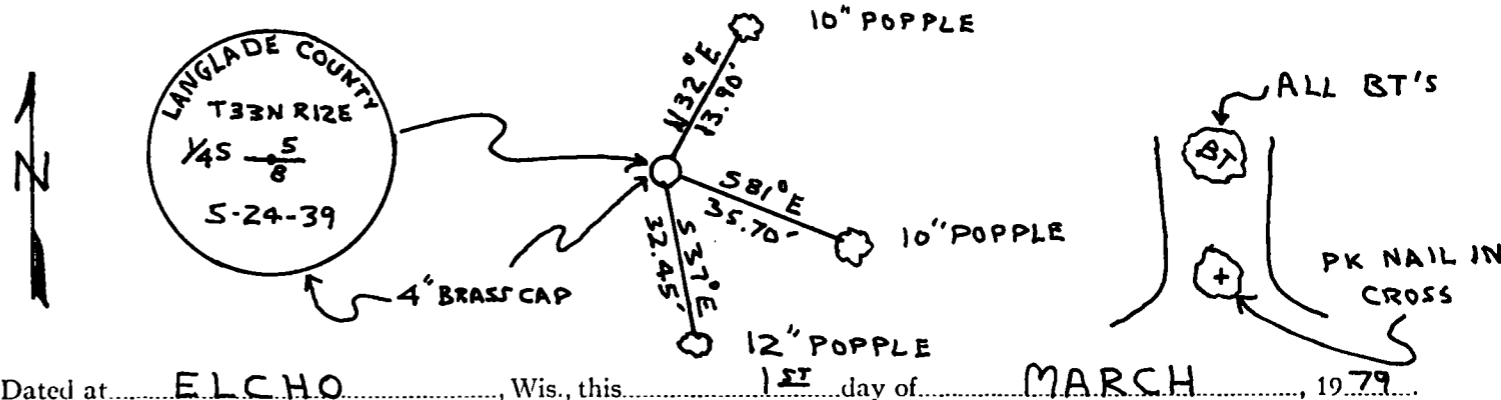


William F. Kelly

Description of corner evidence found:

**LOCATED SOUTH 1/4 CORNER TO SECT. 5, T33N-R 12 E.
 4" BRASS CAP SET IN CONCRETE, EST. BY 1939 RESURVEY**

Description of monument and accessories I established to perpetuate the original location of this corner.



Dated at ELCHO, Wis., this 15th day of MARCH, 1979.

Signature William F. Kelly Title COUNTY SURVEYOR Registration No S-1098
 (County Surveyor, Registered Land Surveyor, or other duly authorized official)

Office of Register of Deeds, County of, I hereby certify that the within instrument was filed in this office for record on the day of, 19..... at o'clock M.

.....
 (Register of Deeds)

By Deputy