

CERTIFIED LAND CORNER RESTORATION

33-12

Index No. E-8

State of Wisconsin }  
County of Lan glade } ss.

I, Robert J. Poss, do hereby certify that on the 22<sup>nd</sup> day of May, 1968, I found evidence of the East 1/16 corner of Sections 5 & 8 Township 33, North, Range 12 East, Fourth, Principal Meridian, as described hereon; and that from this evidence I established a new monument and accessories as described heron to perpetuate the original location of this corner.

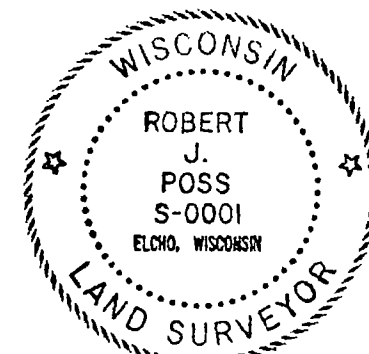
Resident witnesses:

.....  
.....  
.....

History of original corner establishment:

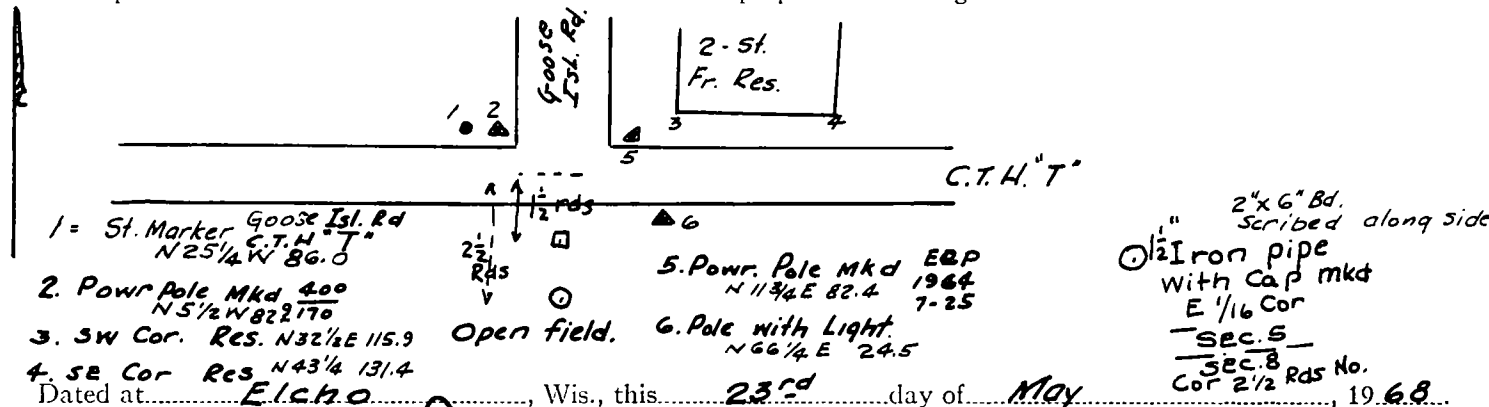
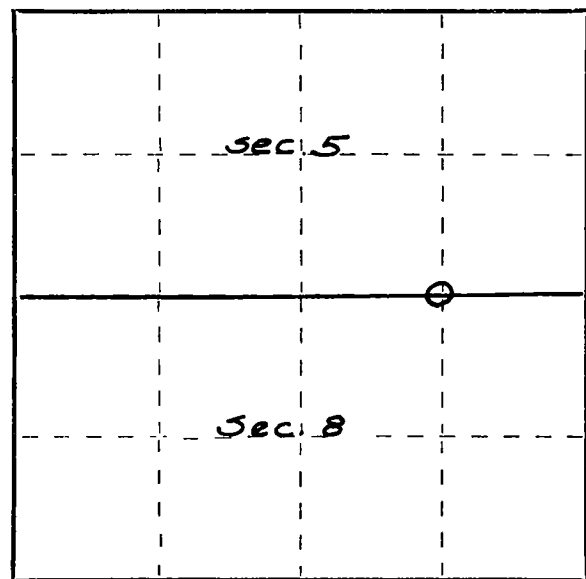
Description of corner evidence found:

Found offset stake in good condition



Robert J. Poss

Description of monument and accessories I established to perpetuate the original location of this corner.



Dated at Elcho, Wis., this 23<sup>rd</sup> day of May, 1968.

Signature Robert J. Poss Title Reg. Land Surveyor Registration No. 5-1  
(County Surveyor, Registered Land Surveyor, or other duly authorized official)

Office of Register of Deeds, County of....., I hereby certify that the within instrument was filed in this office for record on the..... day of....., 19..... at..... o'clock..... M.

(Register of Deeds)

By..... Deputy

○ = Corner monument restored.

FORM 985 H. C. MILLER CO., MILWAUKEE

CERTIFIED LAND CORNER RESTORATION

33-12

Index No. E-8

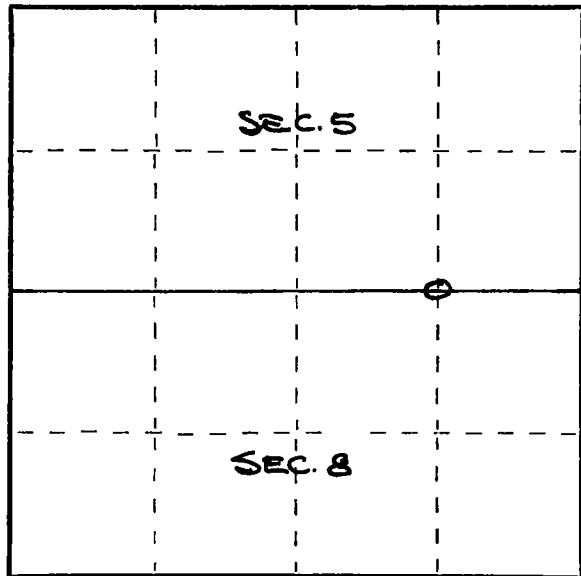
State of Wisconsin }  
County of LANGLADE } ss.

I, ROBERT J. POSS, do hereby certify that on the 11<sup>TH</sup> day of AUGUST, 1971, I found evidence of the EAST 1/8 corner of SECTIONS 5 & 8 Township 33, North, Range 12 EAST, Fourth, Principal Meridian, as described hereon; and that from this evidence I established a new monument and accessories as described hereon to perpetuate the original location of this corner.

Resident witnesses:

By: LANGLADE Co. Hwy Comm.

FORM 985 H. C. MILLER CO., MILWAUKEE

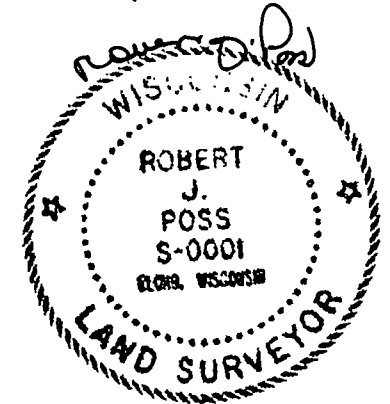


○ = Corner monument restored.

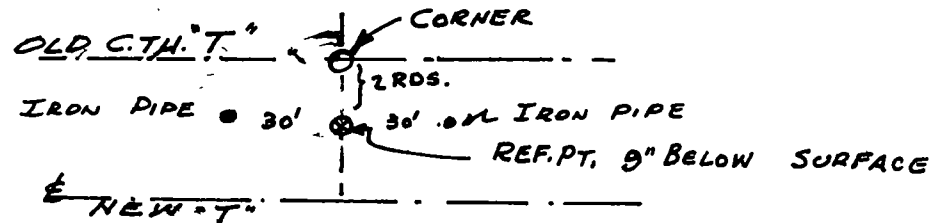
History of original corner establishment:

FOUND CORNER PREVIOUSLY - SEE SHEET  
COUNTY HWY CREW - IN ROAD BUILDING SET - 2 PIPES  
30 FT. EAST & WEST OF OLD REFERENCE POST. REFERENCE  
PT. IS 2 RODS -(33 FT.) SOUTH OF ACTUAL CORNER.

Description of corner evidence found:



Description of monument and accessories I established to perpetuate the original location of this corner.



Dated at ELGIN, Wis., this 10<sup>TH</sup> day of SEPTEMBER, 1971

Signature Robert J. Poss Title REG. LAND SURVEYOR Registration No. S-0001  
(County Surveyor, Registered Land Surveyor, or other duly authorized official)

Office of Register of Deeds, County of \_\_\_\_\_, I hereby certify that the within instrument was filed in this office for record on the \_\_\_\_\_ day of \_\_\_\_\_, 19\_\_\_\_ at \_\_\_\_\_ o'clock \_\_\_\_\_ M.

(Register of Deeds)

By \_\_\_\_\_ Deputy

CERTIFIED LAND CORNER RESTORATION

Index No. E-8

State of Wisconsin }  
County of LANGLADE } ss.

History of original corner establishment:

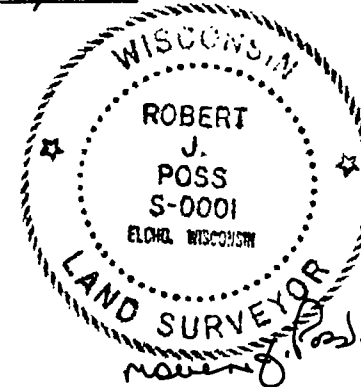
RESETTING WITNESS COR.

E 1/4 COR. SECS. 5 & 8 - 33-12.

I ROBERT J. POSS, do hereby certify that on the 17<sup>TH</sup> day of MAY, 1962, I found evidence of the E 1/4 corner of SECS. 5 & 8 Township 33, North, Range 12 EAST, Fourth, Principal Meridian, as described hereon; and that from this evidence I established a new monument and accessories as described hereon to perpetuate the original location of this corner.

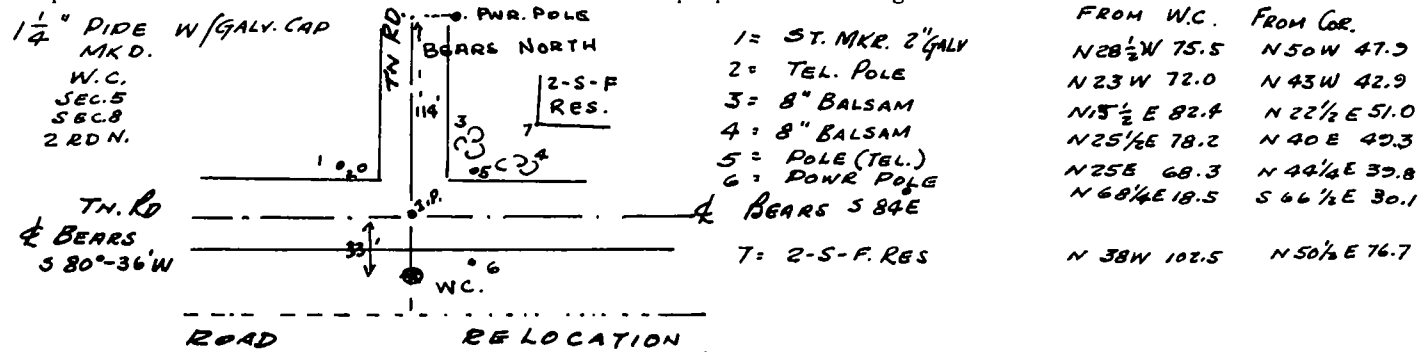
Description of corner evidence found:

FOUND IRON IN CENTER OF OLD ROAD. HAD SET WIT. COR. ON 5-22-68. ROAD RELOCATED. & W.C. FELL IN ROADWAY. SO RESET W/C.



Resident witnesses:

Description of monument and accessories I established to perpetuate the original location of this corner.



Dated at ELCHO, Wis., this 29<sup>TH</sup> day of MAY, 1962.

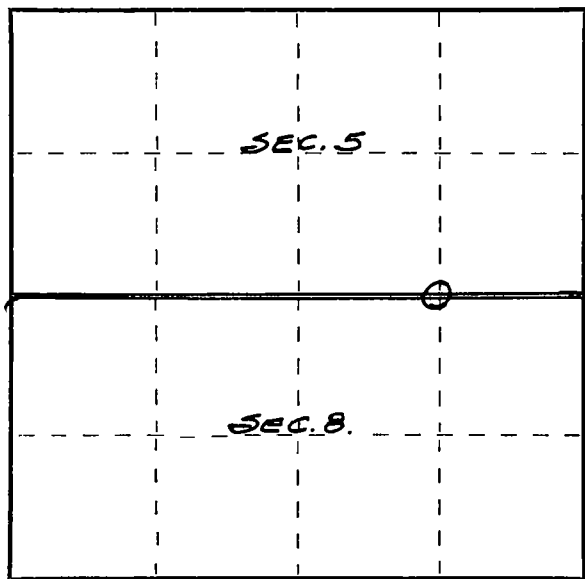
Signature Robert J. Poss Title REG. LAND SURVEYOR Registration No. S-0001  
(County Surveyor, Registered Land Surveyor, or other duly authorized official)

Office of Register of Deeds, County of \_\_\_\_\_, I hereby certify that the within instrument was filed in this office for record on the \_\_\_\_\_ day of \_\_\_\_\_, 19\_\_\_\_ at \_\_\_\_\_ o'clock \_\_\_\_\_ M.

(Register of Deeds)

By \_\_\_\_\_ Deputy

FORM 905 M. C. MILLER CO., MILWAUKEE



○ = Corner monument restored.