

# LANGLADE COUNTY U.S. PUBLIC LAND CORNER RESTORATION

The West Quarter corner of Section 3, T 33 N., R 12 E, Langlade County, WI.

Corner was: (check all that apply)

3312042000

- Restored through acceptance of an obliterated evidence location.
- Restored through acceptance of a found perpetuated location.
- Determined to be lost and re-established through proportionate methods  
Show bearings and distances to PLSS corners used for proportioning, and show original distances).
- Restored/recovered/re-established in a location that differs from a previously established position.  
(Show difference in plan view below).
- Check here if addition information is shown on the reverse side of this form

**Describe record evidence, recovered physical evidence, occupational evidence, testimonial evidence and all other evidence considered in the recovery/restoration of the corner.**

The original corner was established in 1865 by James L. Nowlin. Original bearing trees: tamarac, 8", S70°E, 150 lks. and a tamarac, 6", N56°W, 600 lks.

Ed Brooks, (date unknown) ran the West line of Section 3 and apparently found no evidence of the original corner.

He corrected his random line and at 40.29 ch. south of the section corner, set "gass pipe" for the corner.

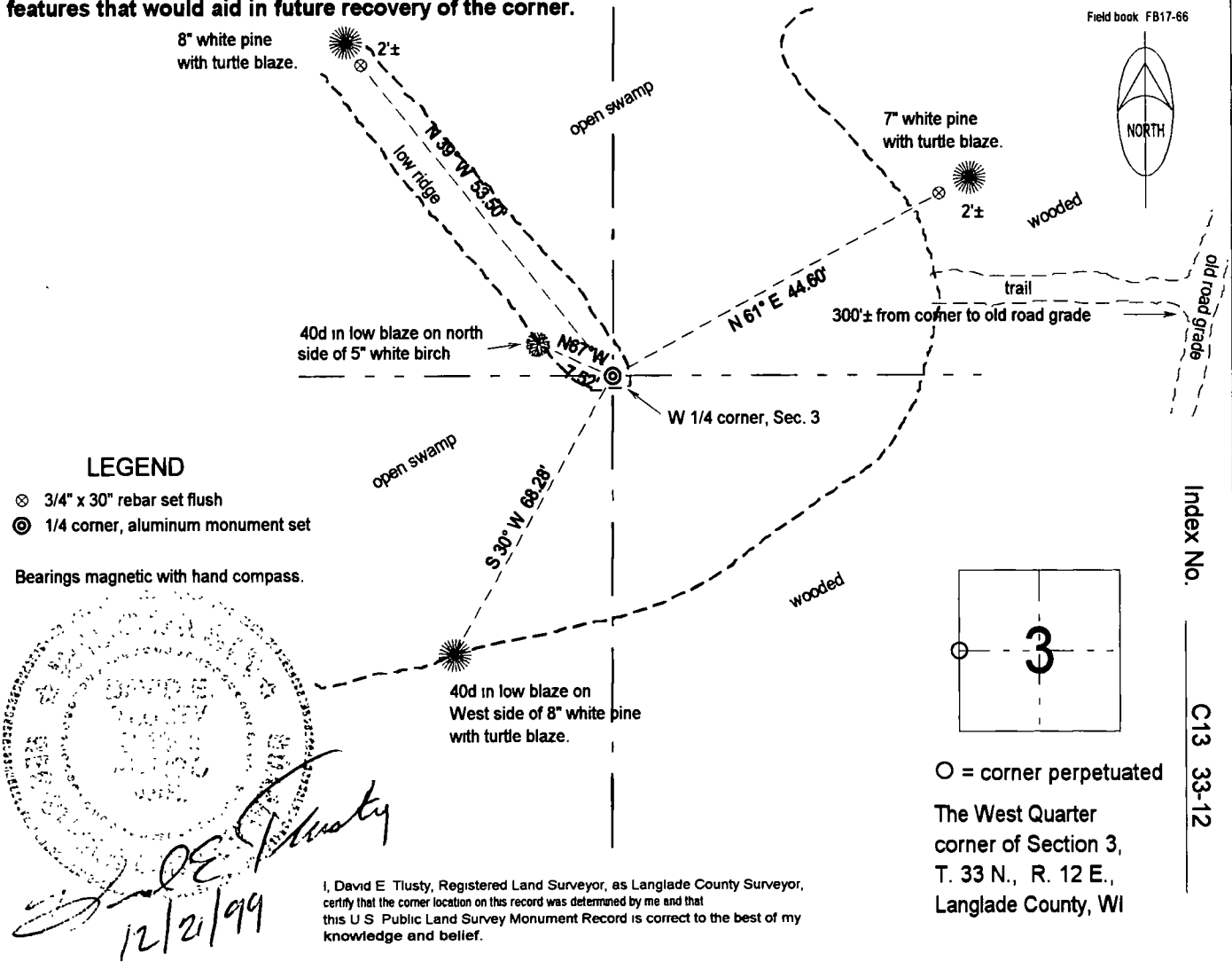
12/15/99, Dave Tlusty, Dean Williams, using GPS as search tool, found 1 1/4" x 36" iron pipe at very old fence corner.

Accepted pipe found as the corner set by Brooks. Replaced it with the monument described below.

**Physical description of the monument set:**

In place of the iron pipe found, I set a 2" x 42" aluminum pipe monument with 3 1/4" aluminum cap with magnet. Set white vinyl sign post 0.7' west of corner monument. Corner is 1'± north of old fence post.

**Describe the accessories used to perpetuate the corner. Include a plan view drawing and accessories found/set. Describe measuring point on bearing trees. Show any topographic features that would aid in future recovery of the corner.**



I, David E. Tlusty, Registered Land Surveyor, as Langlade County Surveyor, certify that the corner location on this record was determined by me and that this U.S. Public Land Survey Monument Record is correct to the best of my knowledge and belief.