

LANGLADE COUNTY U.S. PUBLIC LAND CORNER RESTORATION

The West quarter corner of Section 2, T. 33 N., R. 12 E., Langlade County, WI.

Corner was: (check all that apply)

3312032000

- Restored through acceptance of an obliterated evidence location
- Restored through acceptance of a found perpetuated location
- Determined to be lost and re-established through proportionate methods.
Show bearings and distances to PLSS corners used for proportioning, and show original distances).
- Restored/recovered/re-established in a location that differs from a previously established position.
(Show difference in plan view below).
- Check here if addition information is shown on the reverse side of this form.

Describe record evidence, recovered physical evidence, occupational evidence, testimonial evidence and all other evidence considered in the recovery/restoration of the corner.

The original corner was established in 1851 by James L. Nowlin. Original bearing trees: sugar, 12", S80°E, 15 lks., and a hemlock, 10", N40°W, 20 lks. E. Brooks (date unknown) ran the West line of Section 2, found no evidence of this corner and set it by proportionate methods. He described the corner as "Pile of stone with stone of redish color in centre + on top 4 x 6 x 18. Hutchinson, in 1917, surveyed the line between Sections 2 & 3 "to test Brooks' 1/4 post and found it O.K."
12/16/99 Dave Tlusty, Dean Williams. After locating search area with GPS, found approx. 6" x 6" x ? reddish granite stone with + chiseled on top. Accepted stone as the stone set by Brooks, and as the best evidence of the corner location.

Physical description of the monument set:

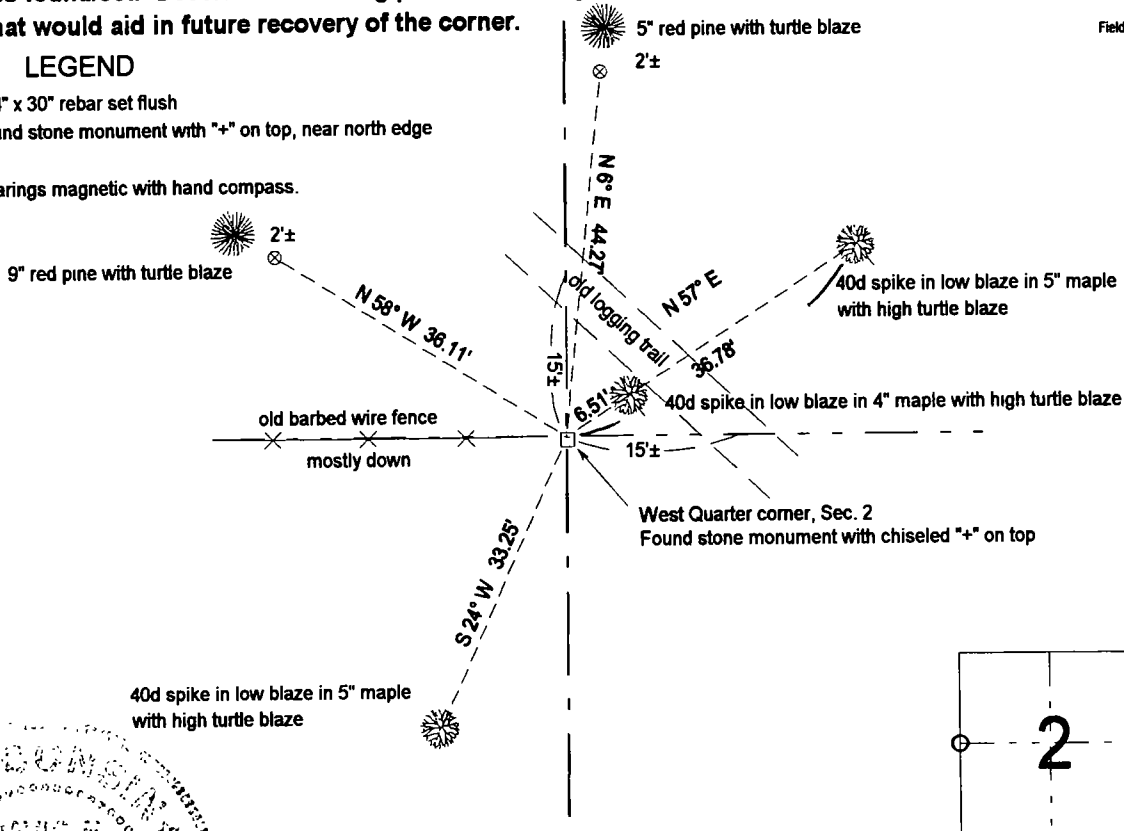
Left existing stone in place. Set white vinyl sign post 0.9' North of stone.
The corner is on the east end of a barbed wire fence, on the SE corner of a small pine plantation, 8"-11" trees.

Describe the accessories used to perpetuate the corner. Include a plan view drawing and accessories found/set. Describe measuring point on bearing trees. Show any topographic features that would aid in future recovery of the corner.

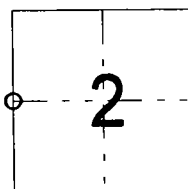
LEGEND

- 3/4" x 30" rebar set flush
- found stone monument with "+" on top, near north edge

Tie bearings magnetic with hand compass.

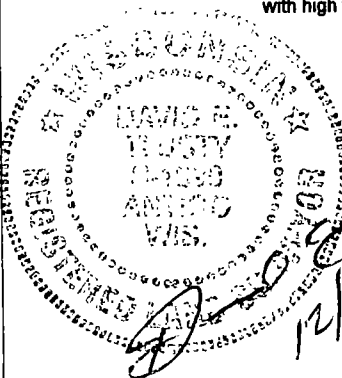


Field book FB17-69



○ = corner perpetuated

The West Quarter corner of Section 2, T. 33 N., R. 12 E., Langlade County, WI



I, David E. Tlusty, Registered Land Surveyor, as Langlade County Surveyor, certify that the corner location on this record was determined by me and that this U.S. Public Land Survey Monument Record is correct to the best of my knowledge and belief.

David E. Tlusty
12/21/99

Index No. C17 33-12