

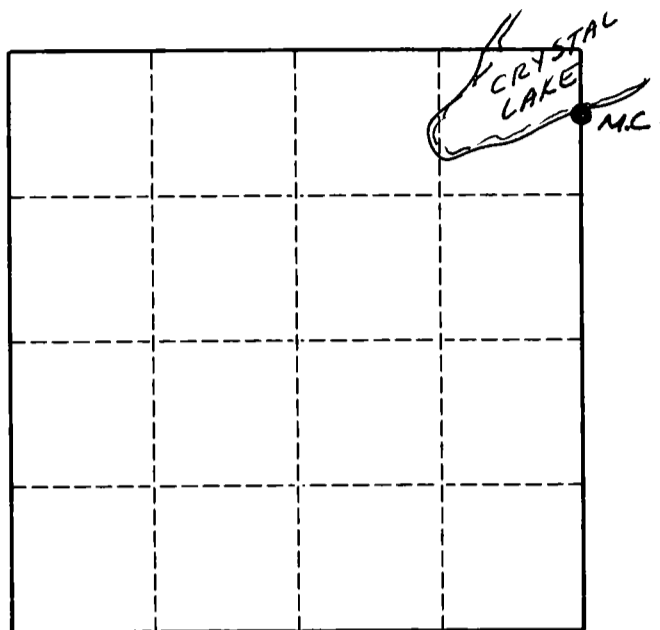
# U. S. PUBLIC LAND SURVEY MONUMENT RECORD

**INSTRUCTIONS:**

This record shall show the location of the corner and shall include all of the following nine elements (a through i).

- (a) Identify the corner by reference to the U.S. public land survey system.  
 O = Corner monument restored.

Meander corner,  
 East line Section 1,  
 South side of Crystal Lake,  
 Township 33 North,  
 Range 12 East,  
 Langlade County,  
 Wisconsin.

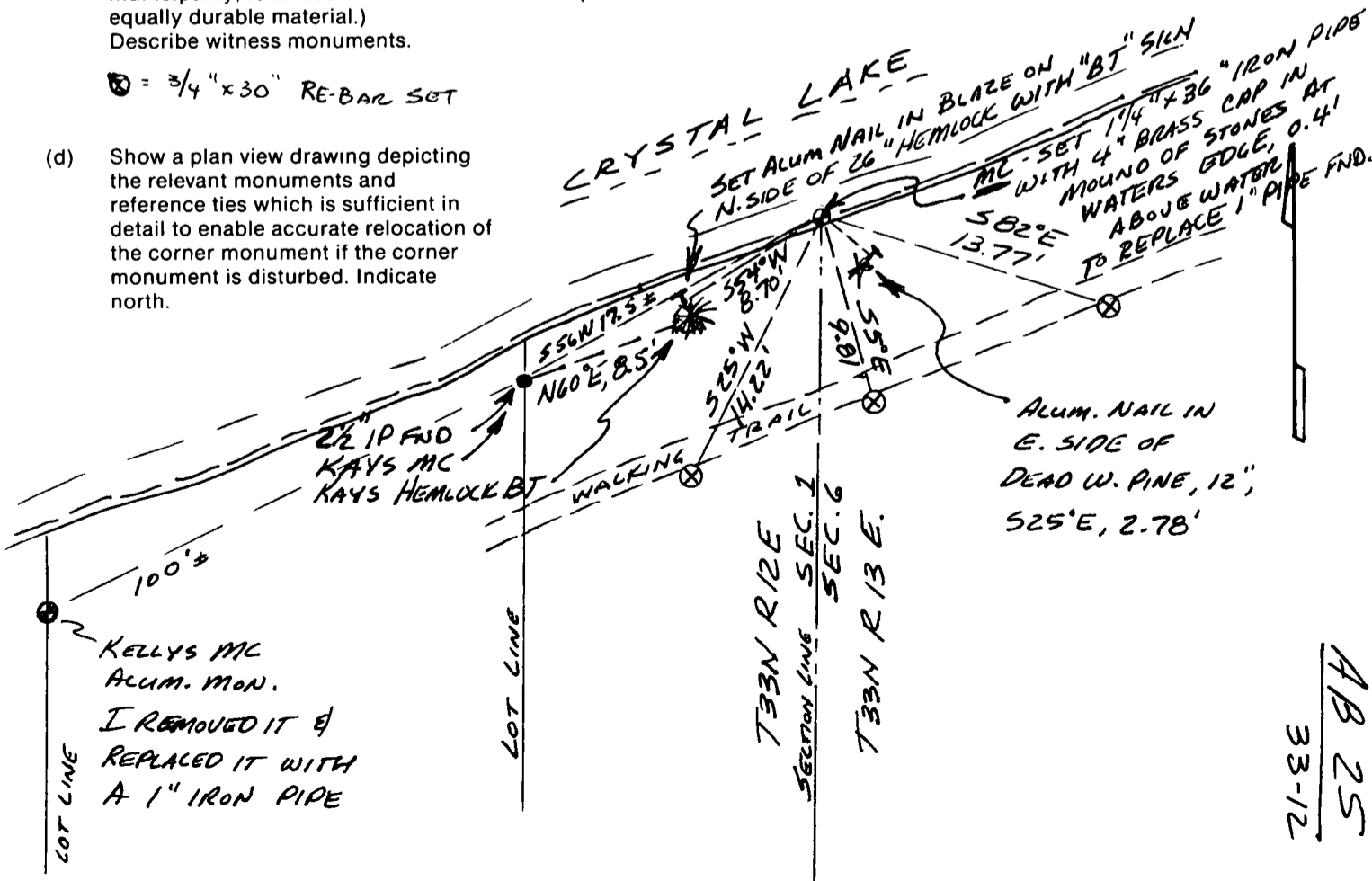


Section 1, T. 33 N., R. 12 E.

- (b) Describe any record evidence, monument evidence, occupational evidence, testimonial evidence or any other material evidence you considered, and whether the monument was found or placed.  
 The original corner was established in 1857 by Alfred Millard. Brooks, in 1908+, found old stake and roots of BT's. Set new stake and hemlock, 16", S 41 W, 6.6', and stone in place, 30" x 30" in edge of lake marked "MC", S80 W, 6.6'. John S. Kay, in 1958, established MC, 1865' north of 1/4 corner and marked hemlock, 18", N60E, 8.5' and two white birch BT's. Former surveyor Kelly, in 1980, located a 1" iron pipe 12' south of shoreline from G. Radtke survey and set 3" aluminum monument over 1" iron pipe. In August of 1992, I found Kellys aluminum monument approximately 100 feet SW of John Kay's MC. (Kelly obviously monumented a lot corner). I removed Kellys aluminum monument and re-set a 1" iron pipe in its place. I found Kays MC (now a 2 1/2" pipe) 17.5 SW of a very old rusted 1" iron pipe at the waters edge. From old 1" iron pipe found, I found an old, rotted hemlock (con't on reverse)
- (c) In the plan view drawing below, provide reference ties to at least 4 witness monuments, or, if the location is within a municipality, to at least 2 witness monuments. (Witness monuments shall be made of concrete, natural stone, iron or other equally durable material.)  
 Describe witness monuments.

⊙ = 3/4" x 30" RE-BAR SET

- (d) Show a plan view drawing depicting the relevant monuments and reference ties which is sufficient in detail to enable accurate relocation of the corner monument if the corner monument is disturbed. Indicate north.



Describe any material discrepancy between the location of the corner as restored or reestablished and the location of that corner as previously restored or reestablished by distance and direction. Show the discrepancy on the plan view drawing under (d), above. Show the distances between the corner as previously restored or reestablished and (1) the corner as restored or reestablished, and (2) to at least 2 of the witness monuments shown on the drawing in (d), above.

(con't. from front side) stump. A portion of the hemlock has just recently fallen towards the lake. I set that portion upright and find an old blaze heal marked facing the 1" iron pipe. I accept the 1" iron pipe found as the corner set by Brooks which was set at the original corner location. I perpetuate this location as shown on the front side of this form.

Kay apparently didn't have Brooks' notes in 1958 when he set a new MC.

Kelly apparently didn't have any notes and didn't do any research at all.

Brooks' stone that he marked appears to have fallen in the lake, as I can find no evidence of a stone that size on shore, but I can see some large ones in the lake.

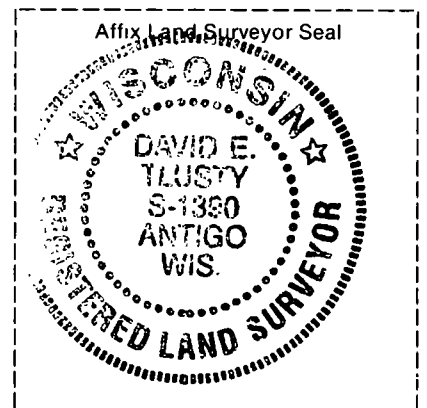
- (f) Was the corner restored through acceptance of (1) an obliterated evidence location, or, (2) a found perpetuated location?  
Brooks' found perpetuated location.

- (g & h) Was the corner reestablished through lost corner proportionate methods? If so, show the method, including the directions and distances to other public land survey corners used as evidence or used for proportioning in determining the corner location.

No.

(i) I, David E. Tlusty, Langlade County Surveyor  
(type or print name)

certify that the corner location shown on this record was determined by me or under my direction and control and that this U.S. Public Land Survey Monument Record is correct and complete to the best of my knowledge and belief.



David E. Tlusty  
Signature

6/18/93  
Date

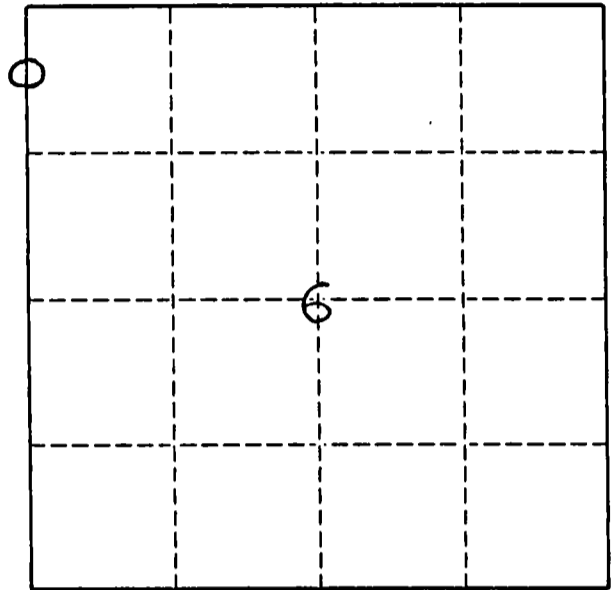
# U. S. PUBLIC LAND SURVEY MONUMENT RECORD

**INSTRUCTIONS:**

This record shall show the location of the corner and shall include all of the following nine elements (a through i).

- (a) Identify the corner by reference to the U.S. public land survey system.  
 O = Corner monument restored.

ORIGINAL CORNER ESTABLISHED BY ALFRED MILLARD IN AUG. 1857.



T 33 N R 13 E

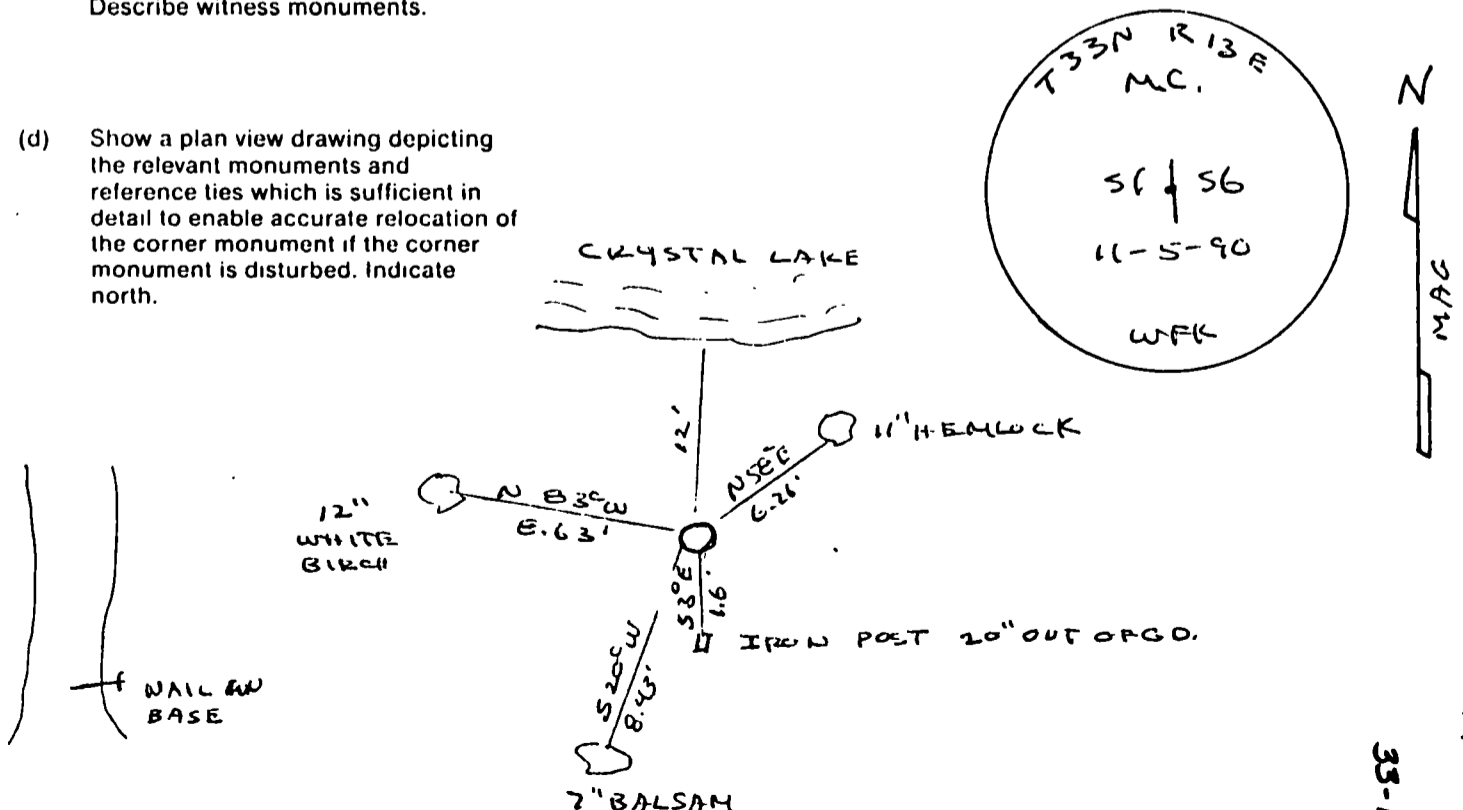
- (b) Describe any record evidence, monument evidence, occupational evidence, testimonial evidence or any other material evidence you considered, and whether the monument was found or placed.

LOCATED 1" I.P. 12' SOUTH OF SHORE OF CRYSTAL LAKE FROM G. RADTKE SURVEY SET 3" ALUM MONUMENT OVER 1" I.P.

*SEE NEW 6/18/93 D. Tenbury*

- (c) In the plan view drawing below, provide reference ties to at least 4 witness monuments, or, if the location is within a municipality, to at least 2 witness monuments. (Witness monuments shall be made of concrete, natural stone, iron or other equally durable material.) Describe witness monuments.

- (d) Show a plan view drawing depicting the relevant monuments and reference ties which is sufficient in detail to enable accurate relocation of the corner monument if the corner monument is disturbed. Indicate north.



A-3-25  
 35-12

