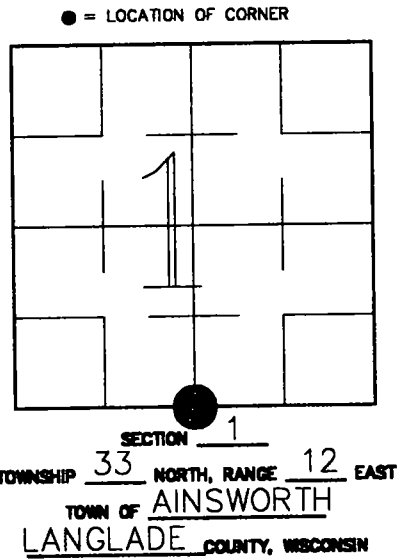


U.S. PUBLIC LAND SURVEY MONUMENT RECORD

HISTORY OF ORIGINAL CORNER ESTABLISHMENT AND SUBSEQUENT RESTORATION AND DESCRIPTION OF ANY RECORD, MONUMENT OCCUPATIONAL, TESTIMONIAL OR OTHER EVIDENCE CONSIDERED:

The original corner was established in 1865 by James L. Nowlin. Original Bearing Trees: Hemlock 10" S1W 20lks., Hemlock 12" N32E 33lks. M. Hutchinson, in 1921 ran the South Line of Sec 1 but does not mention the South 1/4 Corner. In 1973, Tom Arnott found a 1 1/2" Iron Pipe at this location, and replaced it with a 2" Pipe w/Brass Cap. On 7/6/2000, Gerry Bahar and Charlie Brinkmeier found Arnott's Brass Capped 2" Pipe and retied.

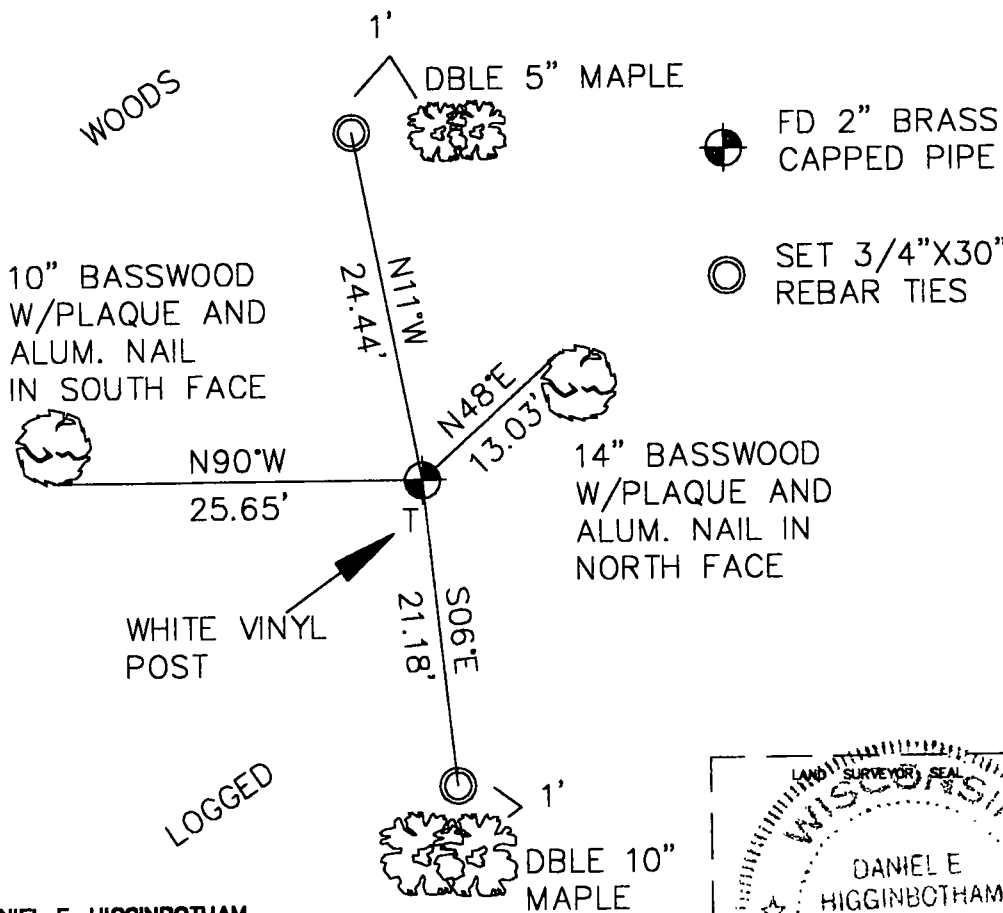


331201020

CORNER WAS: (CHECK ALL THAT APPLY)

- RESTORED THROUGH ACCEPTANCE OF AN OBLITERATED EVIDENCE LOCATION
- RESTORED THROUGH ACCEPTANCE OF A FOUND PERPETUATED LOCATION
- CONSIDERED A LOST CORNER AND REESTABLISHED THROUGH LOST CORNER PROPORTIONATE METHODS (INCLUDE A PLAN VIEW DRAWING SHOWING DISTANCES AND DIRECTIONS TO OTHER PUBLIC LAND SURVEY CORNERS USED FOR PROPORTIONING AND DETERMINING THE CORNER LOCATION)
- RESTORED OR REESTABLISHED IN A LOCATION THAT DIFFERS FROM A PREVIOUS RESTORATION OR REESTABLISHMENT (INCLUDE A PLAN VIEW DRAWING AND INDICATE WHAT WAS SET AND/OR FOUND)
- CHECK IF THERE IS ADDITIONAL INFORMATION ON BACK

DESCRIBE THE MONUMENT AND ACCESSORIES USED TO PERPETUATE THE LOCATION OF THE CORNER (INCLUDE A PLAN VIEW DRAWING AND INDICATE WHAT WAS SET AND/OR FOUND) ALSO INCLUDE FOUR TIES TO THE SECTION CORNER AND DESCRIPTION OF THE TIES.

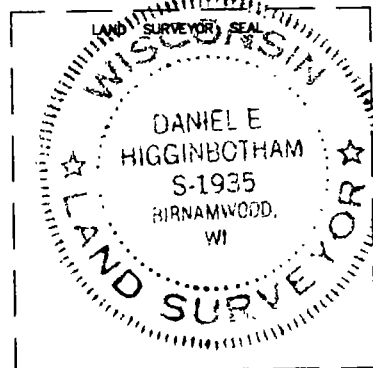


DANIEL E. HIGGINBOTHAM

(type or print name) CERTIFY THAT THE CORNER LOCATION SHOWN ON THIS RECORD WAS DETERMINED BY ME OR UNDER MY DIRECTION AND CONTROL AND THAT THIS U.S. PUBLIC LAND SURVEY MONUMENT RECORD IS CORRECT AND COMPLETE TO THE BEST OF MY KNOWLEDGE AND BELIEF.

Daniel E. Higginbotham
SIGNATURE

7/21/00
DATE



E 23 33-12
INDEX NO.

CERTIFIED LAND CORNER RESTORATION

33-12

Index No. E-23

State of Wisconsin }
County of LANGLADE } ss.

I THOMAS R. ARNOTT, do hereby certify that on the 26TH day of MAY, 1973, I found evidence of the 1/4 SECTION corner of BETWEEN SECS. 1 & 12 Township 33, North, Range 12 EAST, Fourth Principal Meridian, as described hereon; and that from this evidence I established a new monument and accessories as described hereon to perpetuate the original location of this corner.

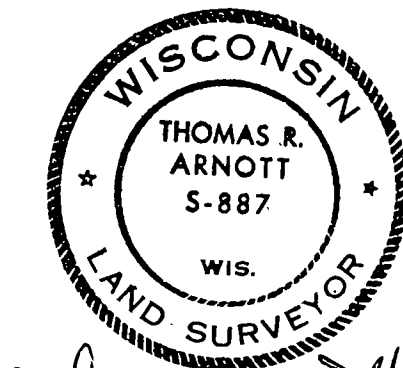
Resident witnesses:

.....
.....
.....

History of original corner establishment:

Description of corner evidence found:

FOUND 1/2" IRON PIPE.

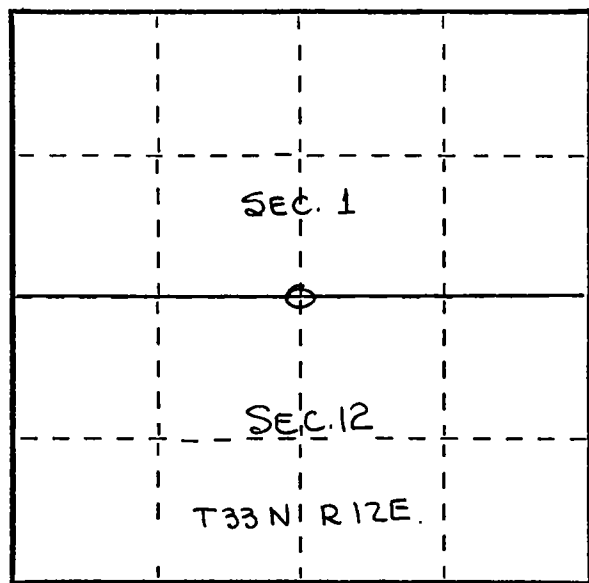


Thomas R. Arnott

Description of monument and accessories I established to perpetuate the original location of this corner.

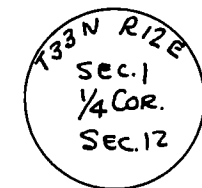
SET 2" IRON PIPE W/BRASS CAP MKD.

FORM 985 M. C. MILLER CO., MILWAUKEE



○ = Corner monument restored.

3 1 1
1 = BASSWOOD 6 N54°E 12.8'
2 = MAPLE 6 S7°E 21.6'
3 = MAPLE 4 N67°W 5.8'



ALL TREES BLAZED & SCRIBED B.T.

Dated at ANTIGO, Wis., this 13TH day of JUNE, 1973

Signature Thomas R. Arnott Title REG. LAND SURVEYOR Registration No. S-887
(County Surveyor, Registered Land Surveyor, or other duly authorized official)

Office of Register of Deeds, County of....., I hereby certify that the within instrument was filed in this office for record on the..... day of....., 19..... at..... o'clock..... M.

.....
(Register of Deeds)

By..... Deputy

Maury J. Ross
County Surveyor