

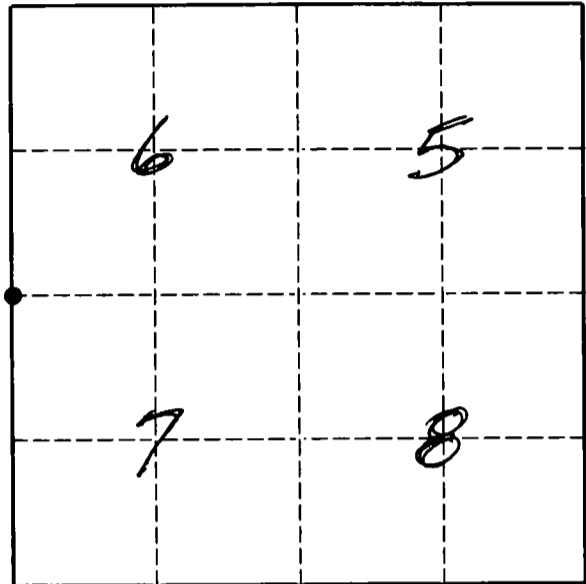
U. S. PUBLIC LAND SURVEY MONUMENT RECORD

INSTRUCTIONS:

This record shall show the location of the corner and shall include all of the following nine elements (a through i).

- (a) Identify the corner by reference to the U.S. public land survey system
 ● = Corner monument restored.

The Southwest corner of Section 6, Township 33 North, Range 13 East, Langlade County, Wisconsin.



- (b) Describe any record evidence, monument evidence, occupational evidence, testimonial evidence or any other material evidence you considered, and whether the monument was found or placed.

The original corner was established in 1857 by Alfred Millard. Original bearing trees were: Lynn, 20", N73W, 40 lks.; W. pine, 14", S65W, 29 lks.; Elm, 12", S35E, 40 lks.; Elm, 14", N82E, 9 lks. Brooks (date unknown) found orig. pine down & burned. Found bottom of old stake and roots of both elms. Set stone 4" x 4" x 20" with "+" on top. Hutchinson, 1917, found stone set by Brooks, and used stone for survey work in the SW 1/4 of Section 6. Tom Arnott, 1973, set 2" iron pipe with brass cap. D. Tlusty, 08/94 found stone with "+" chiseled on, lying on ground at fence corner post. Grandpa Wissbrocker told people that the pipe was wrong and the corner should be up by the fence corner. Based on this testimony (described to me by Dale Wissbrocker) and general agreement with Hutchinsons distances to the North and to the East, I accept the fence corner as best evidence of the original corner location (continued →)

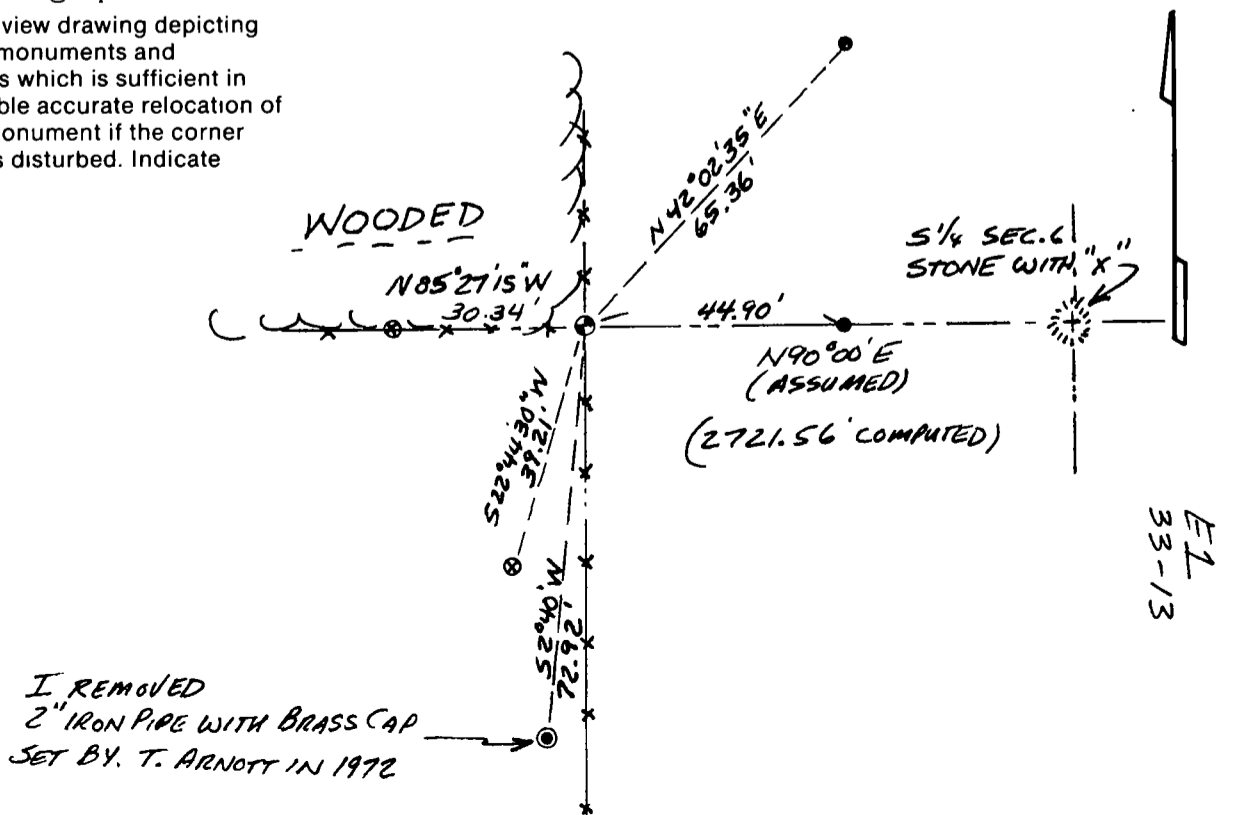
- (c) In the plan view drawing below, provide reference ties to at least 4 witness monuments, or, if the location is within a municipality, to at least 2 witness monuments. (Witness monuments shall be made of concrete, natural stone, iron or other equally durable material.)

FBG-157

Describe witness monuments.

- 1" iron pipe found from recent CSM by Dan Higginbotham
 - ⊗ 3/4" x 30" re-bar set
- Set vinyl sign post 0.8' SE of corner monument

- (d) Show a plan view drawing depicting the relevant monuments and reference ties which is sufficient in detail to enable accurate relocation of the corner monument if the corner monument is disturbed. Indicate north.



Describe any material discrepancy between the location of the corner as restored or reestablished and the location of that corner as previously restored or reestablished by distance and direction. Show the discrepancy on the plan view drawing under (d), above. Show the distances between the corner as previously restored or reestablished and (1) the corner as restored or reestablished, and (2) to at least 2 of the witness monuments shown on the drawing in (d), above.
Tom Arnotts corner is south of the section corner as shown below.

(f) Was the corner restored through acceptance of (1) an obliterated evidence location, or, (2) a found perpetuated location?
A found perpetuated location support by testimony of local resident.

(g & h) Was the corner reestablished through lost corner proportionate methods? If so, show the method, including the directions and distances to other public land survey corners used as evidence or used for proportioning in determining the corner location.

(continued from front side of form)

and set a 1 1/4 x 36" iron pipe with brass cap on the north side of the corner fence post. I left stone with "+" lying on ground just east of the new corner monument.

I removed the iron pipe with brass cap set by Tom Arnott after discussing this "new" corner location with him.

(i) I, David E. Tlusty, Langlade County Surveyor
(type or print name)

certify that the corner location shown on this record was determined by me or under my direction and control and that this U.S. Public Land Survey Monument Record is correct and complete to the best of my knowledge and belief.



Sept. 7, 1994 David E. Tlusty
Signature Date

CERTIFIED LAND CORNER RESTORATION

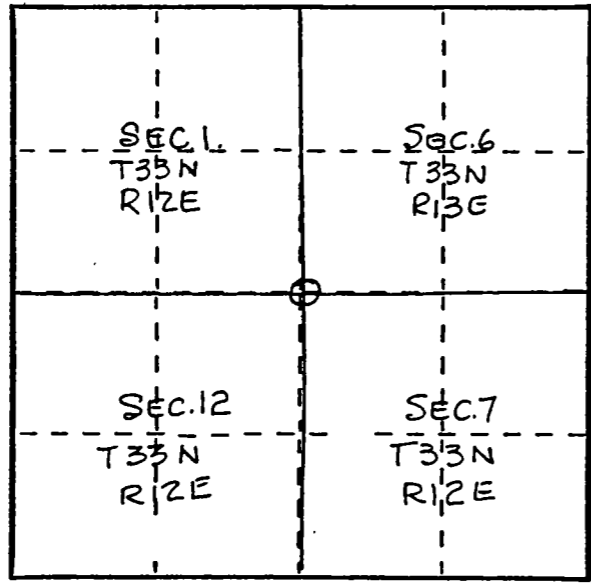
33-13 Index No. [redacted]

State of Wisconsin }
County of LANGLADE } ss.

I THOMAS R. ARNOTT, do hereby certify that on the 19TH day of MAY, 1973, I found evidence of the SECTION corner of SECS. 1, 12, 6 & 7 Township 33, North, Range 12 & 13 EAST, Fourth Principal Meridian, as described hereon; and that from this evidence I established a new monument and accessories as described hereon to perpetuate the original location of this corner.

Resident witnesses:

FORM 985 M. C. MILLER CO., MILWAUKEE



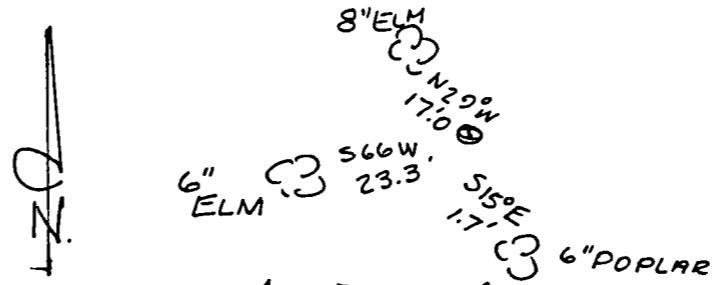
○ = Corner monument restored.

History of original corner establishment:

Description of corner evidence found:

Description of monument and accessories I established to perpetuate the original location of this corner.

SET 2" IRON PIPE W/BRASS CAP MKD



VOID

Dated at ANTIGO, Wis., this 13TH day of JUNE, 1973

Signature Thomas R. Arnett Title REG. LAND SURVEYOR Registration No. 5887
(County Surveyor, Registered Land Surveyor, or other duly authorized official)

Office of Register of Deeds, County of _____, I hereby certify that the within instrument was filed in this office for record on the _____ day of _____, 19____ at _____ o'clock _____ M.

(Register of Deeds)

rauer J. Ross
County Surveyor

By _____ Deputy