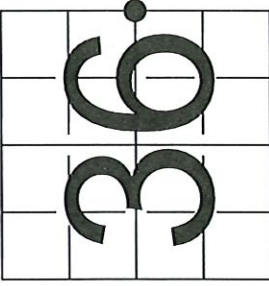


4331136 2000 2023

U S PUBLIC LAND SURVEY MONUMENT RECORD

NOTE: This form is intended and designed to fulfill all requirements of Wisconsin Administrative Code, Chapter A-E 7.08 U.S. Public Land Survey Monument Record (3) (a-f)



A-E 7.08(3)(a) Identity of corner:
EAST 1/4 CORNER SECTION 36,
TOWNSHIP 33 NORTH,
RANGE 11 EAST OF THE 4TH PM,
TOWN OF UPHAM,
COUNTY OF LANGLADE
WISCORS - LANGLADE COUNTY
N: 398,149.509 USft (XXX,XXX.XXX)
E: 646,611.795 USft (XXX,XXX.XXX)
Datum: NAD83 (2011)
GNSS Method RTK
GNSS Control WISCORS VRS

The coordinate value shown has been verified by the average of two or more GPS observations at a markedly different time. Coordinates shown in parenthesis are previously published values.

A-E 7.08(3)(b)

Original Surveyor: Alfred Millard

Date of Original Survey August 1857
Completed: August 1857

Original Accessories:
Sugar 12 N 75° W 30 Links
Y. Birch 12 S 37° E 30 Links

THENCE:

1936 - E.F. Kowalke and C.W. Borth - indicate this position *by symbol* on Langlade Co. Map 50005.

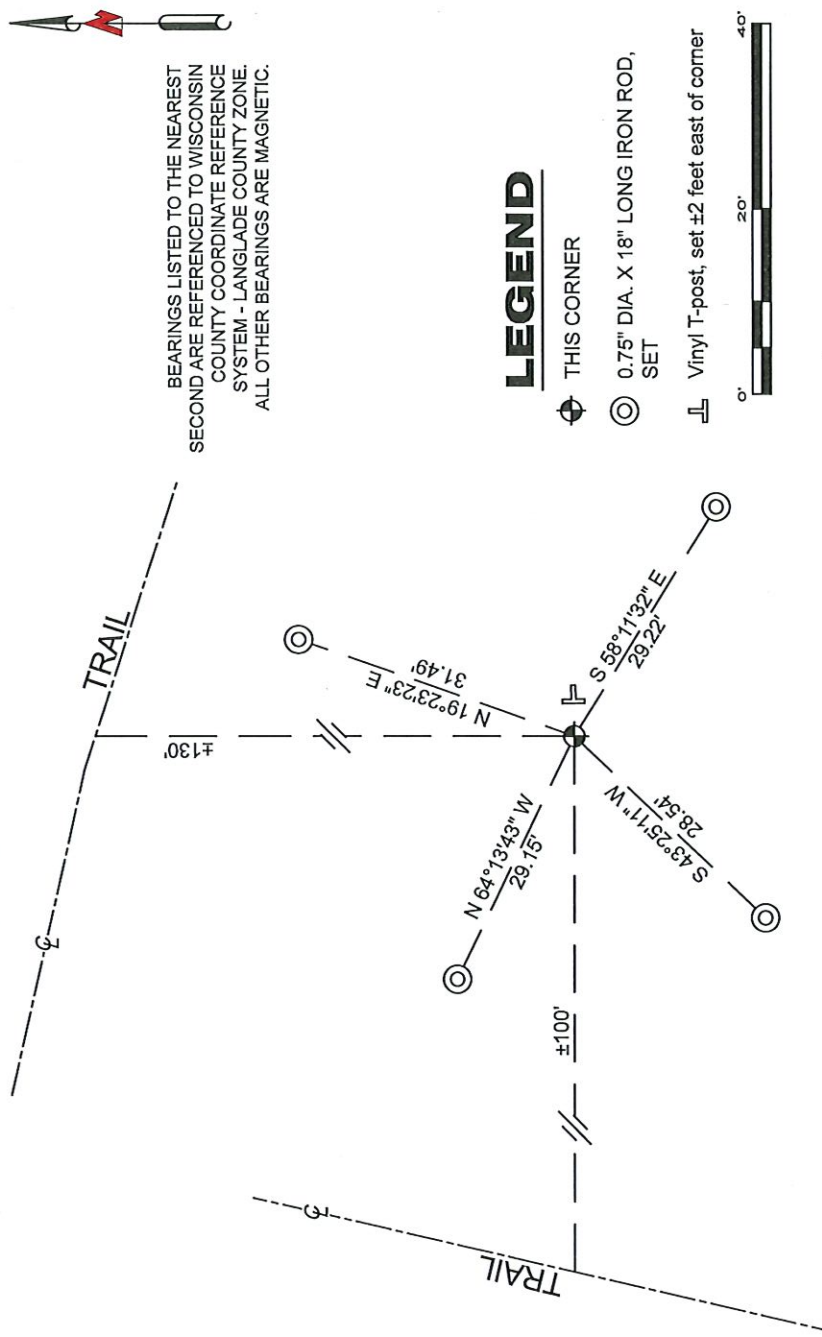
March 1940 - D.A. Hintz, C.W. Borth, and Hugh St. Claire - indicates this position *by symbol* on Langlade Co. Map 40442.

November 10, 1987 - Surveyor 887 - Thomas R. Amott - indicates this position as "brass capped monument found" on Langlade Co. Map 40434.

September 22, 2014 - Surveyor 2517 - Charley G. Brinkmeier - indicates this position as "found brass cap monument" on Langlade Co. Map 20488.

August 7, 2023 - I found a 4" diameter iron pipe with a 4" diameter brass cap stamped to identify the corner position. The monument is in good condition. I established 4 new reference monuments as shown below.

A-E 7.08(3)(c)(d) Plan view of corner with references to at least 4 witness monuments.



LEGEND

- ⊕ THIS CORNER
- ⊙ 0.75" DIA. X 18" LONG IRON ROD, SET
- ⊥ Vinyl T-post, set ±2 feet east of corner



A-E 7.08(3)(e) 1857 Surveyor set a post, 1936 surveyor presumably set a 4" diameter iron pipe with a 4" diameter brass cap, subsequent surveyors found the same. I found a 4" diameter iron pipe with a 4" diameter brass cap.

A-E 7.08(3)(f) I accept this monument as a FOUND PERPETUATED LOCATION of the corner.

A-E 7.08(3)(g)(h) This corner was not determined through lost-corner-proportionate methods.
A-E 7.08(3)(i) I, Jeffrey L. DeMuth, Professional Land Surveyor No. S-2656, hereby certify that the corner location on this record was determined by me or under my direction and control, and that this U.S. Public Land Survey Monument Record is correct and complete to the best of my knowledge, and belief.



Handwritten signature of Jeffrey L. DeMuth

SIGNATURE _____ DATE September 19, 2023

X 25 33-11