

CERTIFIED LAND CORNER RESTORATION

32-11

Index No. **A-22**

State of Wisconsin }
County of Juneau } ss.

History of original corner establishment:

I Raymond Halliday, do hereby certify that on the 21st day of June, 1968, I found evidence of the 1/4 corner of Section 36 Township 33, North, Range 11, Fourth, Principal Meridian, as described hereon; and that from this evidence I established a new monument and accessories as described hereon to perpetuate the original location of this corner.

Corner set in the 1880's by: W. B. Rowland
C. J. North

Description of corner evidence found:

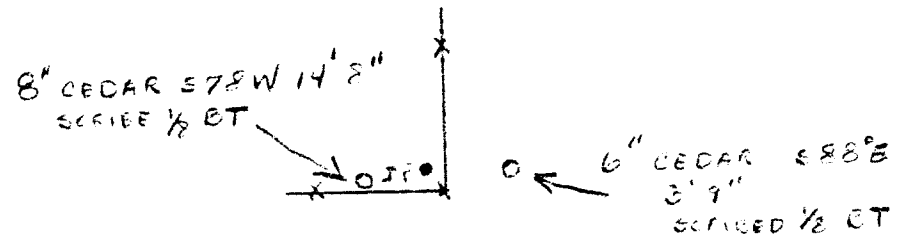
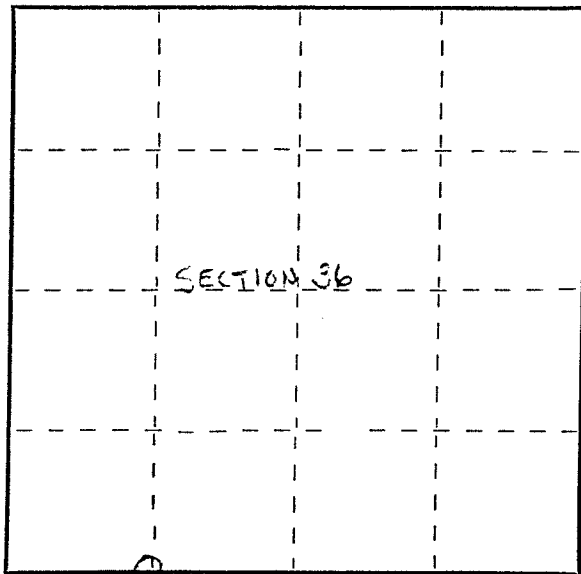
Found a wood stake standing. Marked 33, 11, rock mound.

Resident witnesses:

.....
.....
.....

Description of monument and accessories I established to perpetuate the original location of this corner.

Set std. 1 1/2" pipe with cap marked 1/4 33 11



Dated at Juneau, Wis., this 22nd day of June, 1968.

Signature Raymond Halliday Title Land Surveyor Registration No. S-685
(County Surveyor, Registered Land Surveyor, or other duly authorized official)

Office of Register of Deeds, County of Juneau, I hereby certify that the within instrument was filed in this office for record on the 22nd day of June, 1968 at 10 o'clock AM.

.....
(Register of Deeds)

By..... Deputy

○ = Corner monument restored.

FORM 985 H. C. MILLER CO., MILWAUKEE