

CERTIFIED LAND CORNER RESTORATION

32-11

Index No. **A-23**

State of Wisconsin }
County of Langlade } ss.

History of original corner establishment:

Corner set in the 1930 resurvey

I, Raymond J. Hallisy, do hereby certify that on the 17th day of May, 1969, I found evidence of the S. 1/4 corner of Section 36 Township 33, North, Range 11E, Fourth, Principal Meridian, as described hereon; and that from this evidence I established a new monument and accessories as described hereon to perpetuate the original location of this corner.

Description of corner evidence found:

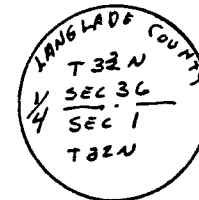
I placed witness stakes during road construction to be able to reset this corner.

Resident witnesses:

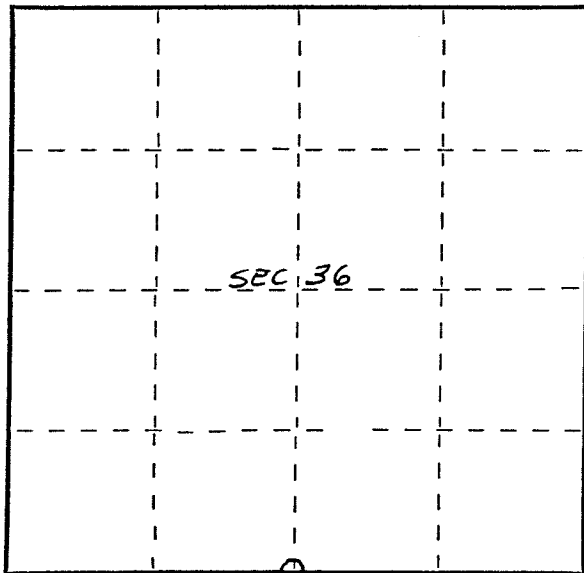
.....
.....
.....

Description of monument and accessories I established to perpetuate the original location of this corner.

**Reset 4" brass cap in cement
B.T.'s to corner
Black Spruce 9" N83E 34ft.
Tamarack 8" N44E 48ft. 8 inches
P.T.'s faced at base of tree and scribed BT**



BRASS CAP MARKED



○ = Corner monument restored.

Dated at Antigo, Wis., this 17th day of May, 1969

Signature Raymond J. Hallisy Title Reg. Land Surveyor Registration No. S-685
(County Surveyor, Registered Land Surveyor, or other duly authorized official)

Office of Register of Deeds, County of....., I hereby certify that the within instrument was filed in this office for record on the..... day of....., 19..... at..... o'clock..... M.

(Register of Deeds)

By..... Deputy

FORM 985 H. C. MILLER CO., MILWAUKEE