

CERTIFIED LAND CORNER RESTORATION

32-11

Index No. **A-24**

State of Wisconsin }
County of Ironside } ss.

History of original corner establishment:

I, Raymond J. Hallisy, do hereby certify that on the 22nd day of June, 1966, I found evidence of the 1/16 corner of Section 36 Township 33, North, Range 11, Fourth, Principal Meridian, as described hereon; and that from this evidence I established a new monument and accessories as described hereon to perpetuate the original location of this corner.

Corner set in the 1880's by: L. F. Nowalke
C. A. North

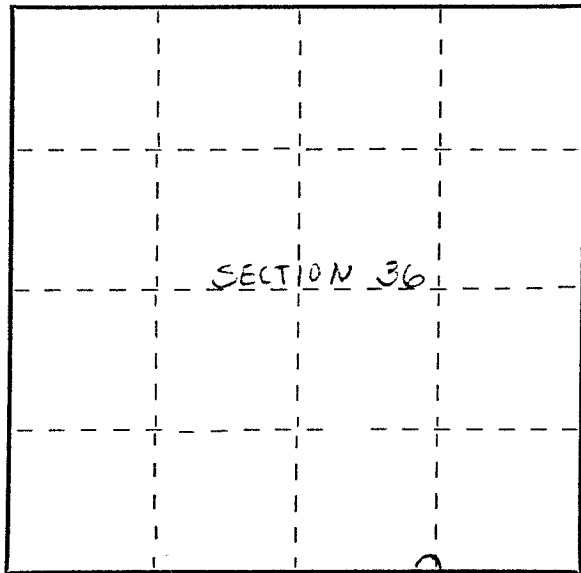
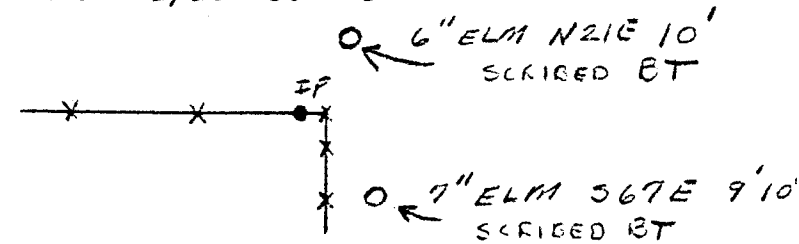
Description of corner evidence found:

Found squared stone down, point and rock mound intact.
Fence corner three ft. east.
Stake marked 1/8 36 1.

Resident witnesses:

.....
.....
.....

Description of monument and accessories I established to perpetuate the original location of this corner.
Set std. 1 1/2" pipe with cap marked 1/16 36 1



○ = Corner monument restored.

Dated at Antigo, Wis., this 22nd day of June, 1966.

Signature Raymond Hallisy Title Land Surveyor Registration No. S-685
(County Surveyor, Registered Land Surveyor, or other duly authorized official)

Office of Register of Deeds, County of Ironside, I hereby certify that the within instrument was filed in this office for record on the 22nd day of June, 1966 at 10 o'clock A. M.

.....
(Register of Deeds)

By..... Deputy

FORM 985 H. C. MILLER CO., MILWAUKEE