

CERTIFIED LAND CORNER RESTORATION

Index No. **X-21**

State of Wisconsin }  
County of Lanlade } ss.

I, Raymond J. Hallisy, do hereby certify that on the 7th day of February, 1981, I found evidence of the 1/4 corner of Section 35 & 36 Township 33, North, Range 11E, Fourth Principal Meridian, as described hereon; and that from this evidence I established a new monument and accessories as described hereon to perpetuate the original location of this corner.

History of original corner establishment:

Corner set in the 1930 resurvey.

Description of corner evidence found:

4" pipe with brass cap on the north side of town road. Fence north.

Resident witnesses:

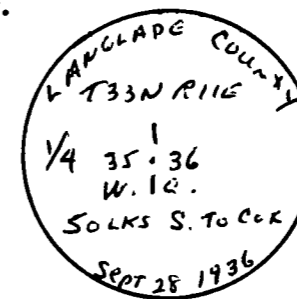
.....  
.....  
.....

Description of monument and accessories I established to perpetuate the original location of this corner.

BT's to Witness corner, no trees nearby.

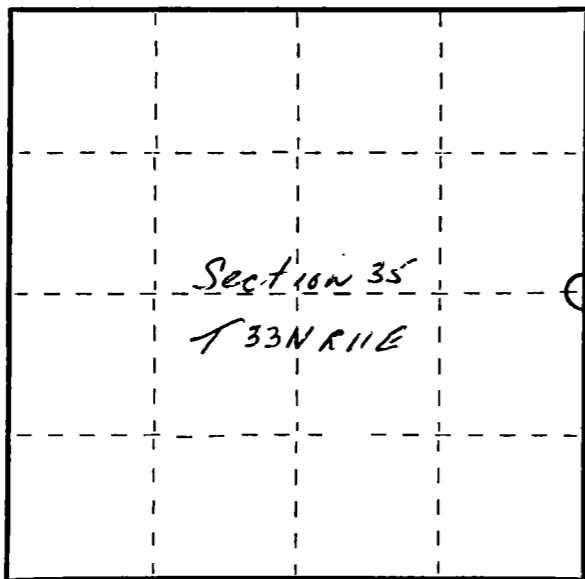
Light pole S54E 90'6"

Telephone Pole S80E 4'7"



FORM 985 H. C. MILLER CO., MILWAUKEE

T 33 N R 11 E



○ = Corner monument restored.

Dated at Antigo, Wis., this 7th day of February, 1981.

Signature Raymond J. Hallisy Title Reg. surveyor Registration No. S-685  
(County Surveyor, Registered Land Surveyor, or other duly authorized official)

Office of Register of Deeds, County of....., I hereby certify that the within instrument was filed in this office for record on the..... day of....., 19..... at..... o'clock..... M.

.....  
(Register of Deeds)

By..... Deputy