

CERTIFIED LAND CORNER RESTORATION

Index No. A-17  
32-11

State of Wisconsin }  
County of Langlade } ss.

I Raymond J. Hallisy, do hereby certify that on the 27th day of May, 1978, I found evidence of the Section corner of 34, 35, 2 & 3 Township 33 & 32, North, Range 11E, Fourth Principal Meridian, as described hereon; and that from this evidence I established a new monument and accessories as described hereon to perpetuate the original location of this corner.

Resident witnesses:

History of original corner establishment:

Corner set in the 1930 resurvey.

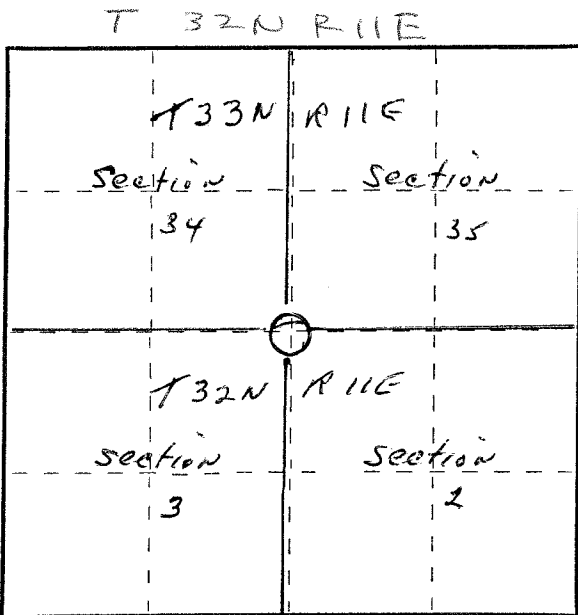
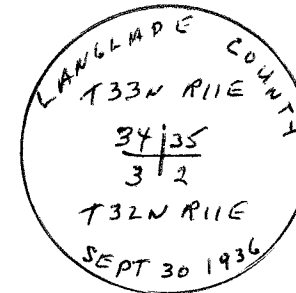
Description of corner evidence found:

- 1/4" iron pipe with brass cap.
- P.O. Flat rock with X N60W 4' 10"
- B.O. Flat rock with X N30E 4'
- B.O. Rock with X S58E 4' 8"
- B.O. Rock with X S25W 5'

Description of monument and accessories I established to perpetuate the original location of this corner.

New BT's

- White Birch 5" N78E 14' 11"
- White Birch 10" N12E 15' 9"



○ = Corner monument restored.

Dated at Antigo, Wis., this 27th day of May, 1978

Signature Raymond J. Hallisy Title Land Surveyor Registration No. S-685  
(County Surveyor, Registered Land Surveyor, or other duly authorized official)

Office of Register of Deeds, County of \_\_\_\_\_, I hereby certify that the within instrument was filed in this office for record on the \_\_\_\_\_ day of \_\_\_\_\_, 19\_\_\_\_ at \_\_\_\_\_ o'clock \_\_\_\_\_ M.

(Register of Deeds)

By \_\_\_\_\_ Deputy