

CERTIFIED LAND CORNER RESTORATION

Index No. A-11

T32N R11E

State of Wisconsin }
County of Langlade } ss.

I, Raymond J. Hallisy, do hereby certify that on the 30th day of March, 1985, I found evidence of the 1/4 corner of 33, 4 Township 33, 4, North, Range 11 EAST, Fourth Principal Meridian, as described hereon; and that from this evidence I established a new monument and accessories as described hereon to perpetuate the original location of this corner.

Resident witnesses:

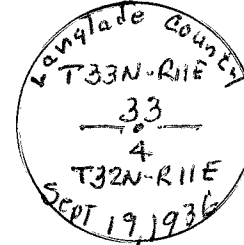
.....
.....
.....

History of original corner establishment:

Corner Established in 1936 Resurvey

Description of corner evidence found:

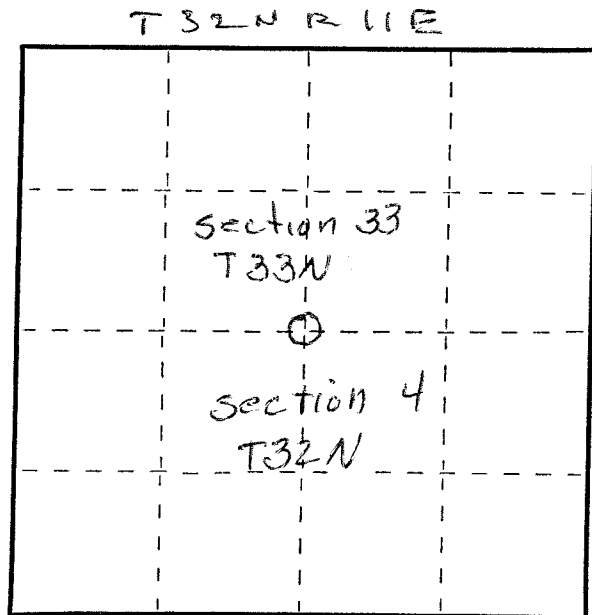
4 inch Iron pipe with Brass cap.



Description of monument and accessories I established to perpetuate the original location of this corner.

New B.T.S

Black spruce	8"	S20°W	9.2 Ft.
" "	6"	S54°E	13.9 Ft.
" "	6"	S78°E	16.3 Ft.
" "	4"	N51°W	7.1 Ft.



○ = Corner monument restored.

Dated at Antigo, Wis., this 30th day of March, 1985.

Signature Raymond J. Hallisy Title Land Surveyor Registration No. 5685
(County Surveyor, Registered Land Surveyor, or other duly authorized official)

Office of Register of Deeds, County of _____, I hereby certify that the within instrument was filed in this office for record on the _____ day of _____, 19____ at _____ o'clock _____ M.

.....
(Register of Deeds)

By..... Deputy

FORM 985 H. C. MILLER CO., MILWAUKEE