

CERTIFIED LAND CORNER RESTORATION

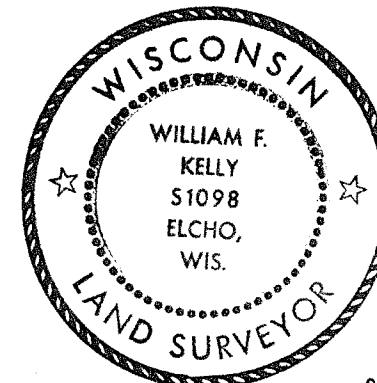
Index No. A-7  
(T32N-R11E)

State of Wisconsin }  
County of LANGLADE } ss.

History of original corner establishment:  
CORNER SET ON RE-SURVEY IN NOV. 1936.

I WILLIAM F. KELLY, do hereby certify that on the 10<sup>TH</sup> day of AUGUST, 1976, I found evidence of the 1/4 SECTION corner of SECTIONS 5 & 32 Township 32 & 33, North, Range 11 E., Fourth Principal Meridian, as described hereon; and that from this evidence I established a new monument and accessories as described hereon to perpetuate the original location of this corner.

Description of corner evidence found:  
4" PIPE WITH BRASS CAP SET IN CONCRETE.

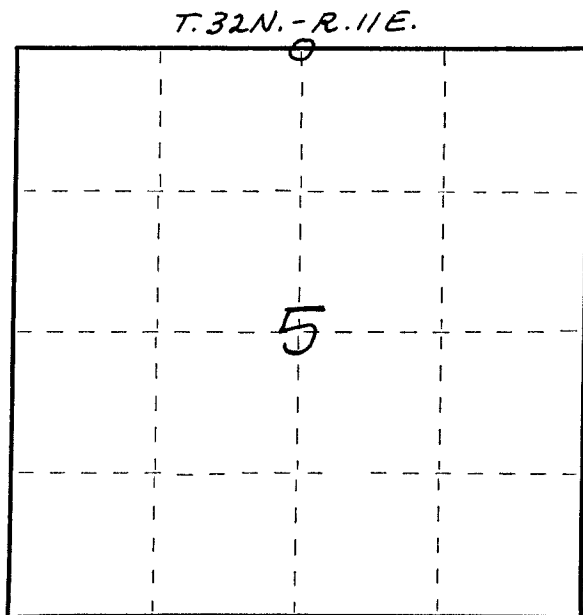
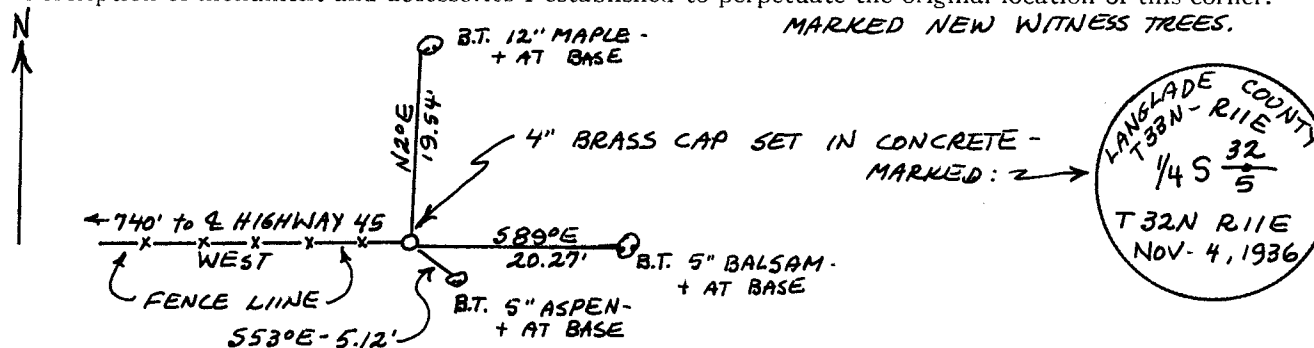


*William F. Kelly 8/13/76*

Resident witnesses:

M. BLACK  
.....  
.....

Description of monument and accessories I established to perpetuate the original location of this corner.  
MARKED NEW WITNESS TREES.



○ = Corner monument restored.

Dated at ELCHO, Wis., this 10<sup>TH</sup> day of AUGUST, 1976.

Signature William F. Kelly Title REGISTERED LAND SURVEYOR Registration No. 51098  
(County Surveyor, Registered Land Surveyor, or other duly authorized official)

Office of Register of Deeds, County of \_\_\_\_\_, I hereby certify that the within instrument was filed in this office for record on the \_\_\_\_\_ day of \_\_\_\_\_, 19\_\_\_\_ at \_\_\_\_\_ o'clock \_\_\_\_\_ M.

(Register of Deeds)

By \_\_\_\_\_ Deputy