

CERTIFIED LAND CORNER RESTORATION

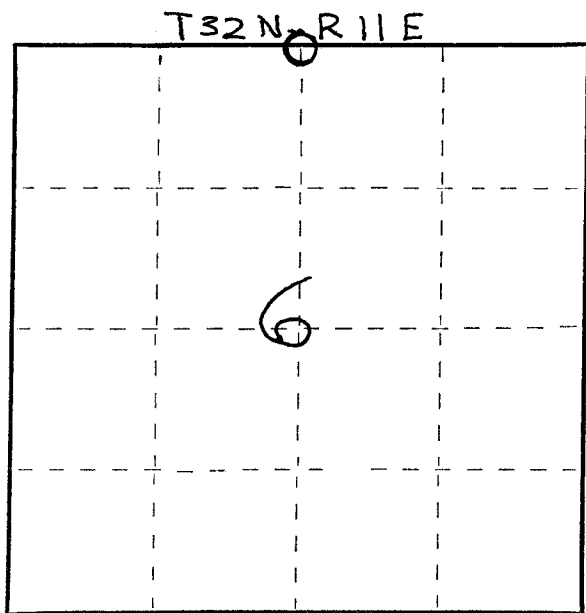
Index No. A-3

State of Wisconsin }  
 County of LANGLADE } ss.

I, WILLIAM F. KELLEY, do hereby certify that on the 25<sup>th</sup> day of JANUARY, 1979, I found evidence of the N 1/4 corner of SECT. 6 Township 32, North, Range 11 EAST, Fourth Principal Meridian, as described hereon; and that from this evidence I established a new monument and accessories as described hereon to perpetuate the original location of this corner.

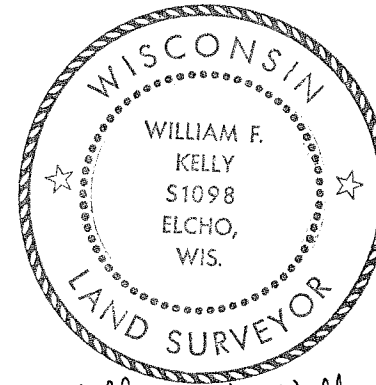
Resident witnesses:

.....  
 .....  
 .....



○ = Corner monument restored.

History of original corner establishment:

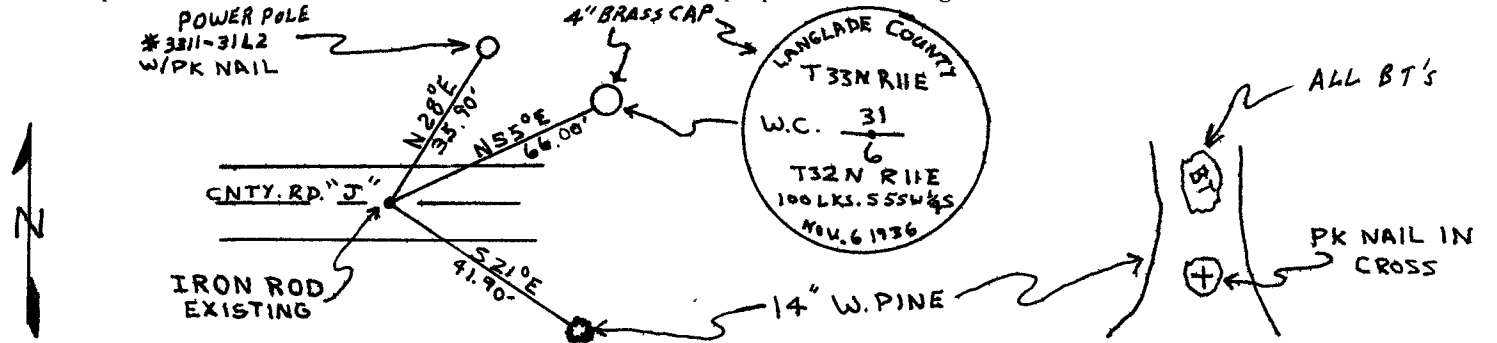


*William F. Kelly*

Description of corner evidence found:

**FOUND IRON ROD IN ROADWAY, WITNESSED BY A 4" BRASS CAP SET BY LANGLADE CO. NOV. 6, 1936**

Description of monument and accessories I established to perpetuate the original location of this corner.



Dated at ELCHO, Wis., this 25<sup>th</sup> day of JANUARY, 1979.

Signature William F. Kelly Title COUNTY SURVEYOR Registration No. S-1098  
 (County Surveyor, Registered Land Surveyor, or other duly authorized official)

Office of Register of Deeds, County of \_\_\_\_\_, I hereby certify that the within instrument was filed in this office for record on the \_\_\_\_\_ day of \_\_\_\_\_, 19\_\_\_\_ at \_\_\_\_\_ o'clock \_\_\_\_\_ M.

.....  
 (Register of Deeds)

By \_\_\_\_\_ Deputy