

U.S. PUBLIC LAND SURVEY MONUMENT RECORD

(Prepared and as required by S. A-E 7.08 WI Administrative Code)

The NW corner of Section 5, T. 32 N., R. 11 E., Langlade County, WI

Corner was: (check all that apply)

- Restored through acceptance of an obliterated evidence location.
- Restored through acceptance of a found perpetuated location.
- Determined to be lost and re-established through proportionate methods.
(Show bearings and distances to PLSS corners used for proportioning.)
- Restored/recovered/reestablished in a location that differs from a previously established position. (Show difference in plan view below.)

- Check here if additional information is shown on the reverse side of this form.

Describe record evidence, recovered physical evidence, occupational evidence, testimonial evidence and all other evidence considered in the recovery/restoration of the corner.

- ORIGINAL - HIRAM C. FELLOWS - 1859 - SET POST TO SECTIONS 5-6-31-32
 BTs { SPRUCE 5" N57°W 141ks. TAMARAC 6" S65°E 531ks.
 do 6" N80°E 441ks. SPRUCE 5" S55°W 451ks.
- CCC RESURVEY - KOWALKE & BORTH - 1936 - FOUND 3" GALVANIZED IRON PIPE WITH STAMPED CAP BY COUNTY SURVEYOR. SET NEW WITNESSES: 2-TEL. POLES; N45 1/2°E 60.5', S27 1/2°E 93.6' AND 2- CEDAR POSTS; 8" N45°W 7.4', 6" N45°E 7.3'. DID NOT SET BRASS CAP.
- TOM ARNOTT - AUG 26 1991 TIED TO THIS CORNER IN CSM VS P13.

43311310000

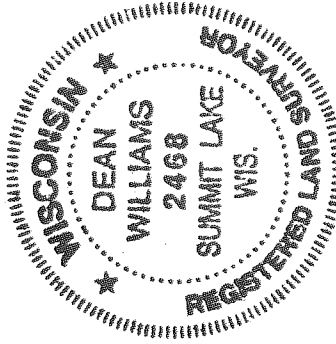
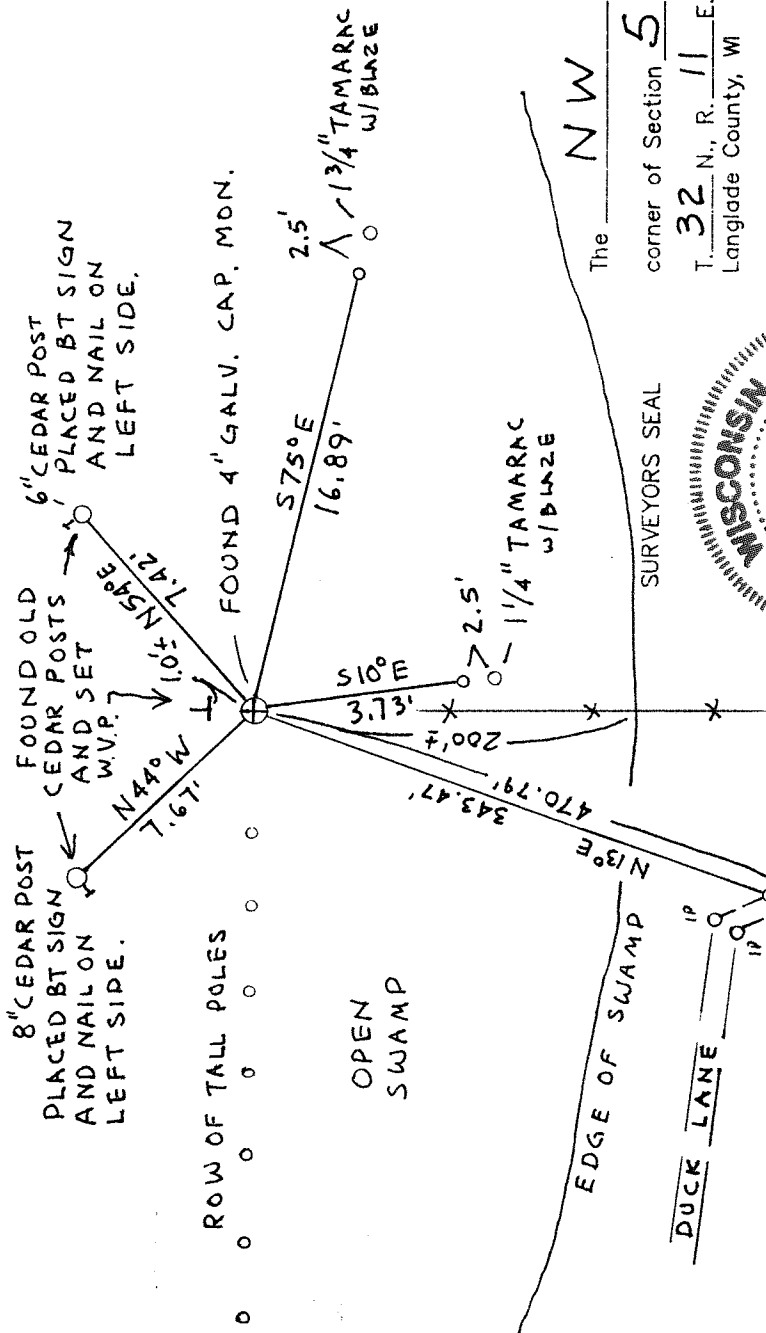
Physical description of the monument set: - DEAN A. WILLIAMS JULY 12, 2002
 FOUND 4" GALV. STAMPED CAP IRON PIPE MOMENT, ALSO FOUND 2- CEDAR POST WITNESSES, NE & NW.
 RETIED 7/12/2002

Describe the accessories used to perpetuate the location of the corner. Include a plan view drawing and indicate accessories found/set. Describe measuring point on bearing trees. Show any topographic features that would aid in future recovery of the corner. APPROXIMATE LAT./LONG.

- o - 3/4" x 30" REBAR N 45° 17' 31.05"
- L - WHITE VINYL POST (W.V.P.) W 89° 09' 26.53"
- ⊕ - 4" GALV. CAP MON.

NOT TO SCALE
 MAG. BEARINGS

OPEN SWAMP



I, DEAN A. WILLIAMS, certify that the corner location shown on this record was determined by me or under my direction and control and that this U.S. Public Land Survey Monument Record is correct and complete to the best of my knowledge and belief.

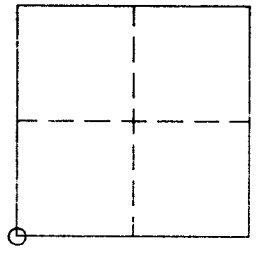
Dean Williams 8/21/2002

Signature

Date

The NW corner of Section 5
 T. 32 N., R. 11 E.
 Langlade County, WI

INDEX No. 2-5
33-11



o = Location of corner