

CERTIFIED LAND CORNER RESTORATION

Index No. V-3

33-11

State of Wisconsin }
County of Langlade } ss.

I Raymond J. Hallsy, do hereby certify that on the 3rd day of June, 1978, I found evidence of the 1/4 corner of Section 30 & 31 Township 33, North, Range 11E, Fourth Principal Meridian, as described hereon; and that from this evidence I established a new monument and accessories as described hereon to perpetuate the original location of this corner.

Resident witnesses:

.....
.....
.....

History of original corner establishment:

Corner set in the 1930 resurvey.

Description of corner evidence found:

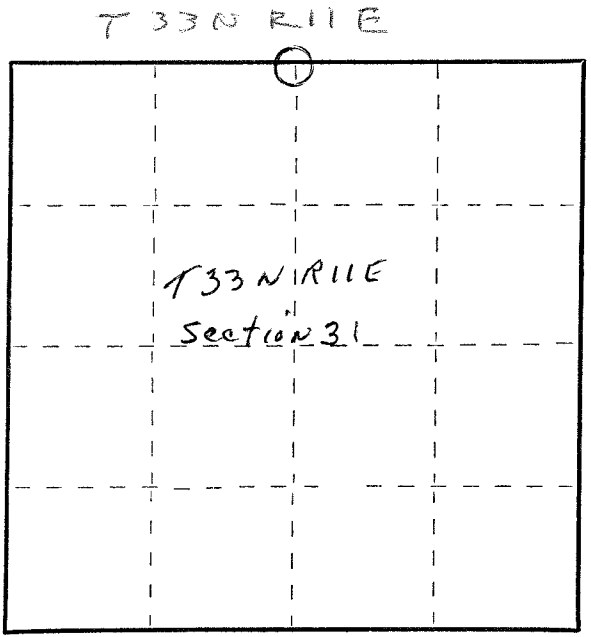
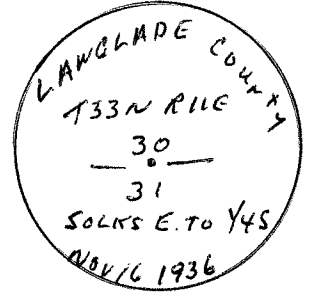
4" iron pipe with brass cap on west side of highway B

*1995 D Trusty
NOTE: ACTUAL CORNER
SHOULD BE BRASS CAP
EMBED IN CONCRETE
PART 2TH "E"*

Description of monument and accessories I established to perpetuate the original location of this corner.

New BT's to witness corner.

WPS guy line pole N13E 15' 4"
4" X 4" cement ROW marker N1E 18' 3"
Telephone junction box #1243 S29E 8' 4"



○ = Corner monument restored.

Dated at Antigo, Wis., this 3rd day of June, 1978.

Signature Raymond J. Hallsy Title Land Surveyor Registration No. S-685
(County Surveyor, Registered Land Surveyor, or other duly authorized official)

Office of Register of Deeds, County of _____, I hereby certify that the within instrument was filed in this office for record on the _____ day of _____, 19____ at _____ o'clock _____ M.

(Register of Deeds)

By _____ Deputy

4331130 020 1978

FORM 985 H. C. MILLER CO., MILWAUKEE