

433/129 2000

# U.S. PUBLIC LAND SURVEY MONUMENT RECORD

(Prepared and as required by S. A-E 7.08 WI Administrative Code)

The East 1/4 corner of Section 29, T. 33 N., R. 11 E., Langlade County, WI  
Corner was (check all that apply)

- Restored through acceptance of an obliterated evidence location.
- Restored through acceptance of a found perpetuated location.
- Determined to be lost and re-established through proportionate methods. (show bearings and distances to PLSS corners used for proportioning.)
- Restored/recovered/re-established in a location that differs from a previously established position. (Show difference in plan view below.)
- Check here if additional information is shown on the reverse side of this form.

### Describe record evidence, recovered physical evidence, occupational evidence, testimonial evidence, and all other evidence considered in the recovery/restoration of the corner.

1860- Government Surveyor H.C. Fellows set corner in original survey. BTs: 10" Birch N37°E, 24 links; 12" Hemlock, S56°W, 27 links; 1936 - Surveyors E.F. Kowalke and C.W. Borth "found stake hole with small stone mound around it. Stake rotted away. Corner was established by Dorr. BT by Dorr Hemlock 12" S45-1/4°W 34 links is rotten stump but marks plain on unrotted facing. Other BT by Dorr gone. Set 4" iron pipe with marked brass cap for 1/4 corner and made new witnesses; Hard Maple 12" S78-1/2°E, 64 links, Do 14" N83°W, 64 1/2 links, "x" on granite rock S29-1/2°E, 26 1/2 links"

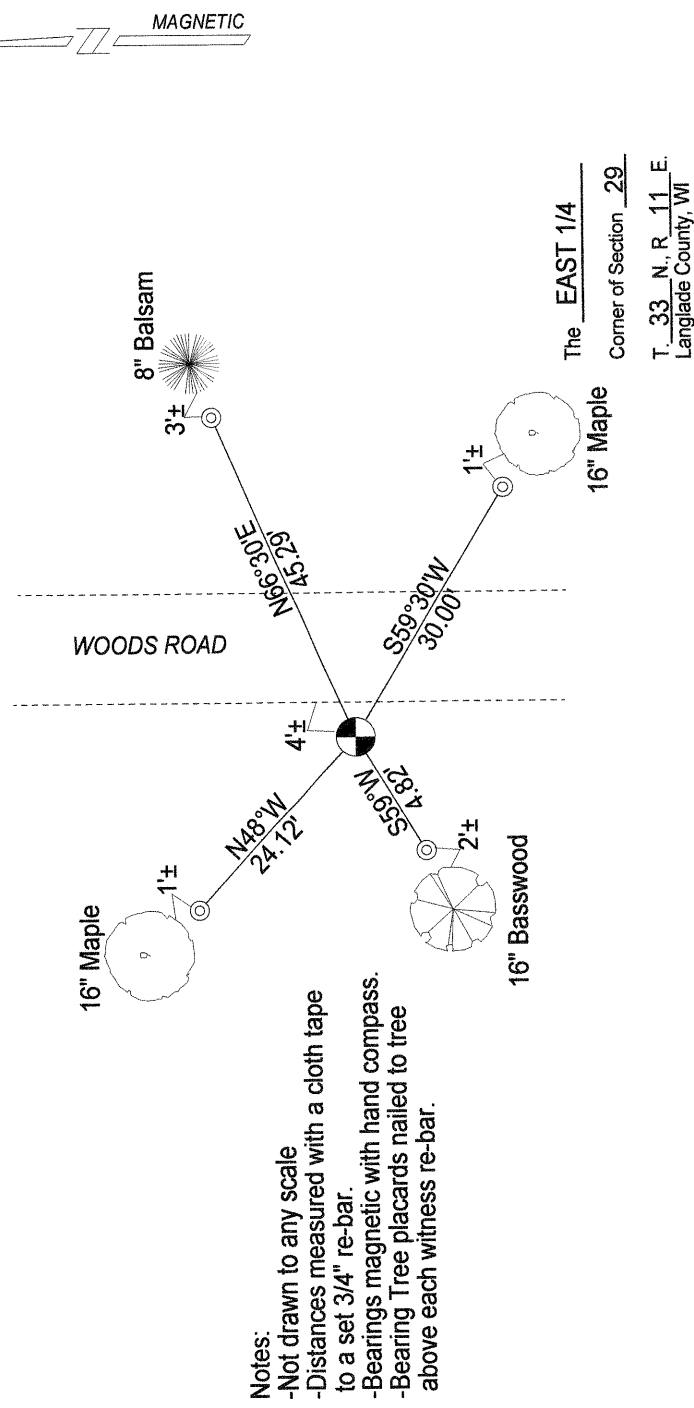
1982- Surveyor Hallisy found 4" pipe with brass cap and set new bearing trees: (9" Hard Maple S44°W, 6.3'; 9" Hard maple N45°W, 25.8'; Basswood N72°E, 29.4'; 9" Hard maple S59°E, 31.5').

2010 - I found 4" brass capped monument leaning badly, and 3 of Hallisy's bearing trees. I stood monument upright and placed stones around it.

### Physical description of the monument set:

2010 - I accept the found 4" brass capped monument as the corner location and tied it out as follows.

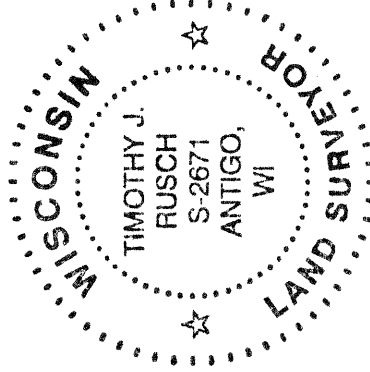
Describe the accessories used to perpetuate the location of the corner. Include a plan view drawing and indicate accessories found/set. Describe measuring point on bearing trees. Show any topographic features that would aid in future recovery of the corner.



### Notes:

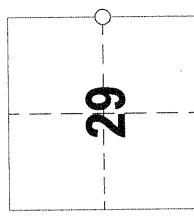
- Not drawn to any scale
- Distances measured with a cloth tape to a set 3/4" re-bar.
- Bearings magnetic with hand compass.
- Bearing Tree placards nailed to tree above each witness re-bar.

SURVEYORS SEAL



I, Timothy J. Rusch, certify that the corner location shown on this record was determined by me or under my direction and control and that this U.S. Public Land Survey Monument Record is correct and complete to the best of my knowledge and belief.

Timothy J. Rusch 02-18-2011  
Signature Date



○ = Location of corner