

LANGLADE COUNTY U.S. PUBLIC LAND CORNER RESTORATION

The South Quarter corner of Section 29, T. 33 N., R. 11 E., Langlade County, WI.

- Corner was: (check all that apply)**
- Restored through acceptance of an obliterated evidence location.
 - Restored through acceptance of a found perpetuated location.
 - Determined to be lost and re-established through proportionate methods.
 - Show bearings and distances to PLSS corners used for proportioning, and show original distances).
 - Restored/recovered/re-established in a location that differs from a previously established position.
 - (Show difference in plan view below).
 - Check here if additional information is shown on the reverse side of this form.

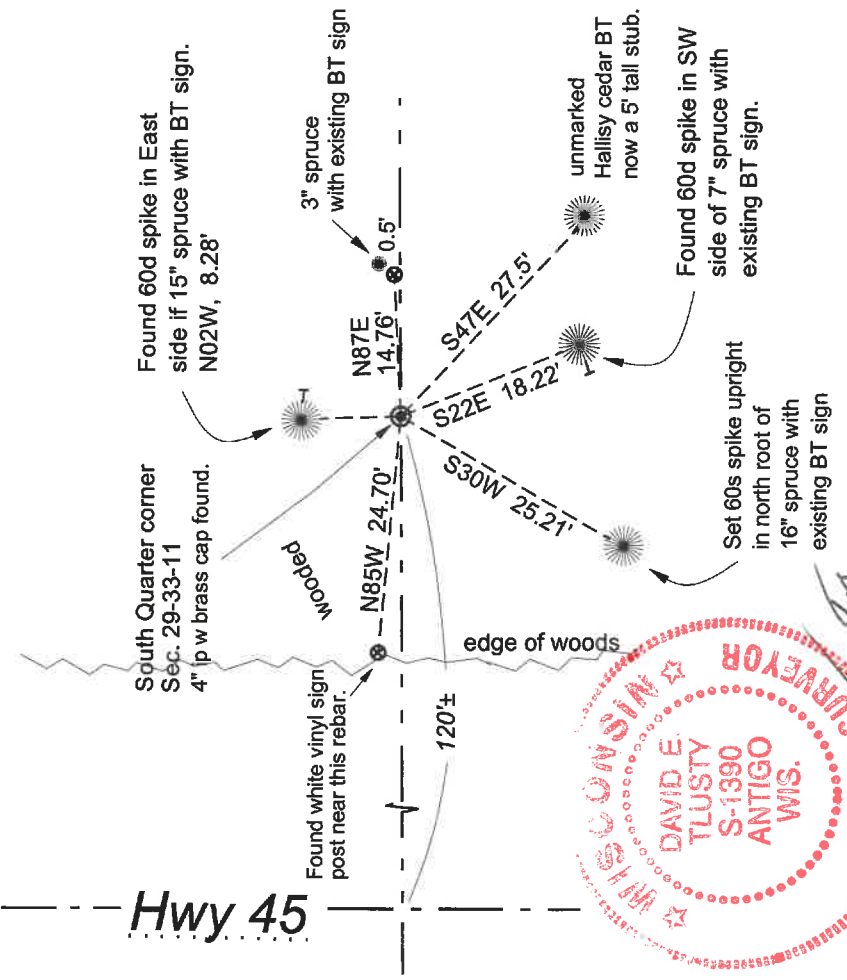
4331129 0020

Describe record evidence, recovered physical evidence, occupational evidence, testimonial evidence and all other evidence considered in the recovery/restoration of the corner.
 The original corner was established in 1860 by Hiram Fellows. Original bearing trees: tamarac, 6", S48W, 29 links and a tamarac, 7", N56E, 46 links.
 In the 1930's a resurvey of this township was completed by D. Hintz. No transcribed notes exist at this time.
 In 1978, Ray Hallisy found the 1930's 4" brass capped monument and set three new BT's.
 1/10/18 D. Tlusty found the 4" brass capped monument in good condition. Also found bearing trees that were marked in the past few years, but no new corner form has been filed which show those.
 I measured to the bearing trees as shown below.

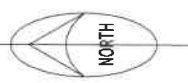
Physical description of the monument set:

I left the existing 4" iron pipe with brass cap in place, top is 18" above ground.
 Found a white vinyl sign post, N25W, 1.3'.

Describe the accessories used to perpetuate the corner. Include a plan view drawing and accessories found/set. Describe measuring point on bearing trees. Show any topographic features that would aid in future recovery of the corner.



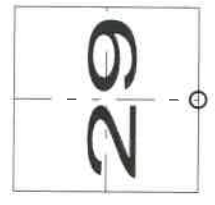
FB 22-108



LEGEND

- ⊙ 4" iron pipe w/brass cap found
 - ⊗ 3/4" rebar found
- The bearings are magnetic with a hand compass.

Index No. V 7 33-11



○ = corner perpetuated
 The South Quarter corner of Section 29, T. 33 N., R. 11 E., Langlade County, WI



I, David E. Tlusty, Registered Land Surveyor, as Langlade County Surveyor, certify that the corner location on this record was determined by me and that this U.S. Public Land Survey Monument Record is correct to the best of my knowledge and belief.

David E. Tlusty
 4/13/2020

CERTIFIED LAND CORNER RESTORATION

Index No. V-7

33-1

State of Wisconsin }
County of Langlade } ss.

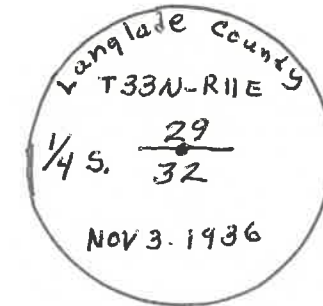
I Raymond J. Hallisy, do hereby certify that on the 29th day of April, 1978, I found evidence of the South 1/4 corner of Section 29 Township 33, North, Range 11 East, Fourth Principal Meridian, as described hereon; and that from this evidence I established a new monument and accessories as described hereon to perpetuate the original location of this corner.

History of original corner establishment:

Corner Established in 1936 Resurvey

Description of corner evidence found:

4 inch Iron Pipe With Brass Cap



Resident witnesses:

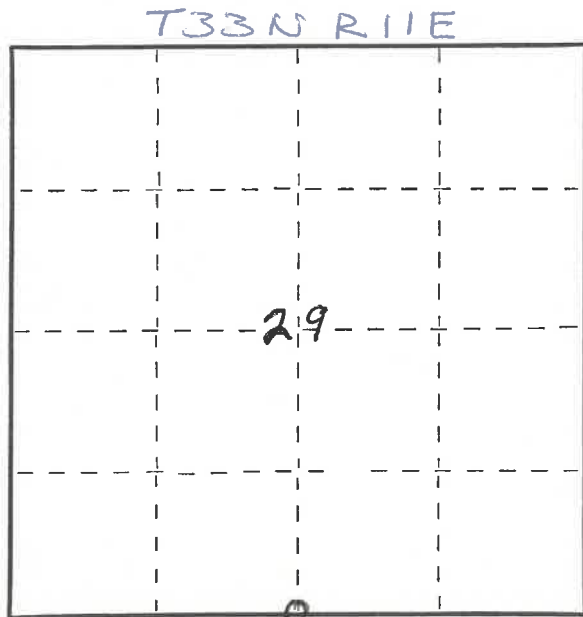
.....
.....
.....

Description of monument and accessories I established to perpetuate the original location of this corner.

New B.T.S

Cedar 11" S50°E 27 FT. 2 inches
Balsam 6" N87°E 26 FT. 10 inches
Spruce 3" S11°W 6 FT. 1 inch

FORM 985 R. C. MILLER CO., MILWAUKEE



○ = Corner monument restored.

Dated at Antigo, Wis., this 29th day of April, 1978.

Signature Raymond J. Hallisy Title Registered Land Surveyor Registration No. 5-685
(County Surveyor, Registered Land Surveyor, or other duly authorized official)

Office of Register of Deeds, County of....., I hereby certify that the within instrument was filed in this office for record on the..... day of....., 19..... at..... o'clock..... M.

.....
(Register of Deeds)

By..... Deputy