

CERTIFIED LAND CORNER RESTORATION

Index No. V-9

State of Wisconsin }  
County of Lanflade } ss.

History of original corner establishment:

Corner set in the 1930 resurvey.

I, Raymond J. Hallisy, do hereby certify that on the 15th day of May, 1982, I found evidence of the Section corner of 29, 28, 32, & 33 Township 33, North, Range 11E, Fourth Principal Meridian, as described hereon; and that from this evidence I established a new monument and accessories as described hereon to perpetuate the original location of this corner.

Description of corner evidence found:

4" iron pipe with brass cap.

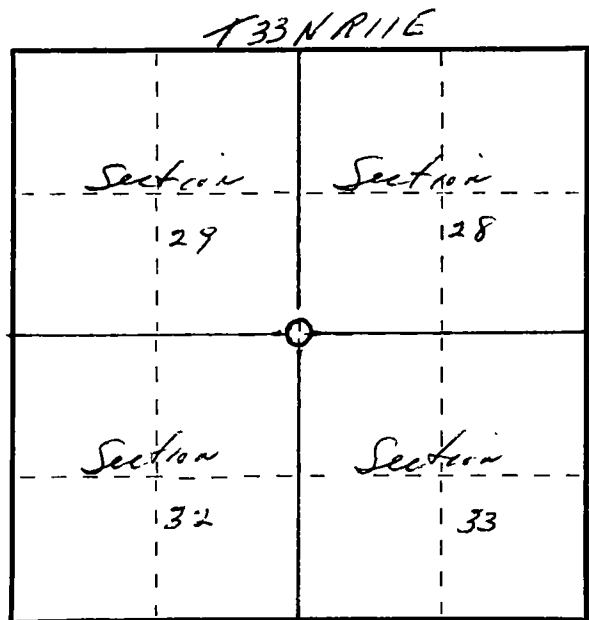
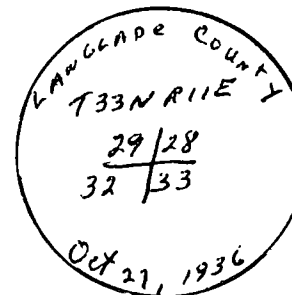
Resident witnesses:

.....  
.....  
.....

Description of monument and accessories I established to perpetuate the original location of this corner.

New ET's

8" Black ash S2W 8'  
10" Balsam S51W 25'  
5" Black ash N14E 16.5'



O = Corner monument restored.

Dated at Antigo, Wis., this 15th day of May, 1982

Signature Raymond J. Hallisy Title Land Surveyor Registration No. S-685  
(County Surveyor, Registered Land Surveyor, or other duly authorized official)

Office of Register of Deeds, County of \_\_\_\_\_, I hereby certify that the within instrument was filed in this office for record on the \_\_\_\_\_ day of \_\_\_\_\_, 19\_\_\_\_ at \_\_\_\_\_ o'clock \_\_\_\_\_ M.

(Register of Deeds)

By \_\_\_\_\_ Deputy

FORM 985 H. C. MILLER CO., MILWAUKEE