

CERTIFIED LAND CORNER RESTORATION

93-11

Index No. U-13

State of Wisconsin }
County of Langlade } ss.

History of original corner establishment:

Corner set in the 1930 resurvey.

I, Raymond J. Hallisy, do hereby certify that on the 15th day of November, 1969, I found evidence of the S 1/16 corner of Section 27 Township 33, North, Range 11E, Fourth, Principal Meridian, as described hereon; and that from this evidence I established a new monument and accessories as described hereon to perpetuate the original location of this corner.

Description of corner evidence found:

Found old stake standing, rock mound. Marked 27, 28 1/8.

Resident witnesses:

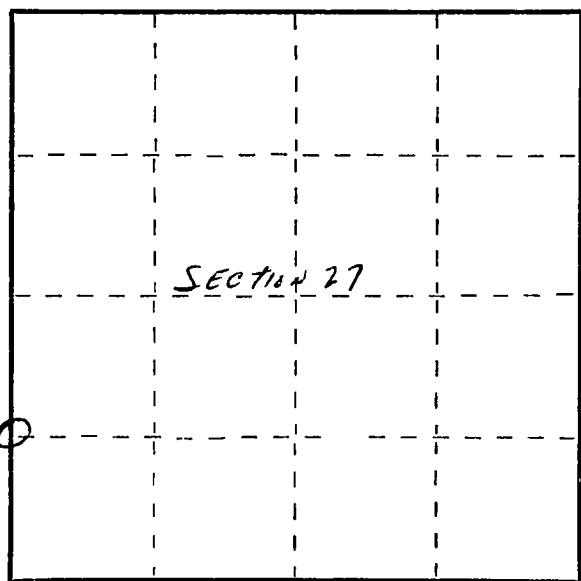
.....
.....
.....

Description of monument and accessories I established to perpetuate the original location of this corner.

Set 2" pipe with brass cap, rock mound.
B.T.s to corner.
6" Hard Maple N4W 18.4 Lks.
10" White Birch S68E 20 Lks.
4" Brass Cap M.C. N4E 26.3 Lks.
B.T.'s faced at base of tree and scribed BT.



FORM 985 M. C. MILLER CO., MILWAUKEE



○ = Corner monument restored.

Dated at Antigo, Wis., this 15th day of November, 1969

Signature Raymond J. Hallisy Title Reg. Land Surveyor Registration No. S-685
(County Surveyor, Registered Land Surveyor, or other duly authorized official)

Office of Register of Deeds, County of....., I hereby certify that the within instrument was filed in this office for record on the.....day of....., 19..... at.....o'clock..... M.

.....
(Register of Deeds)

By.....Deputy